

Product datasheet

Anti-C4 antibody ab48582

1 Image

Overview

Product name	Anti-C4 antibody
Description	Chicken polyclonal to C4
Host species	Chicken
Specificity	ab48582 bind to 3 bands (88,75 and 33 kDa) of human C4B. May cross react with forms of C4b from other mammalian species.
Tested applications	Suitable for: ELISA, WB, IHC-P
Species reactivity	Reacts with: Human
Immunogen	Purified human complement C4B.
Positive control	This antibody gave a positive result in IHC in the following FFPE tissue: Human Liver.

Properties

Form	Liquid
Storage instructions	Shipped at 4°C. Store at +4°C short term (1-2 weeks). Upon delivery aliquot. Store at -20°C or -80°C. Avoid freeze / thaw cycle.
Storage buffer	Preservative: 0.02% Sodium Azide Constituents: PBS
Purity	Whole antiserum
Clonality	Polyclonal
Isotype	IgY

Applications

Our [Abpromise guarantee](#) covers the use of **ab48582** in the following tested applications.

The application notes include recommended starting dilutions; optimal dilutions/concentrations should be determined by the end user.

Application	Abreviews	Notes
ELISA		
WB		

Application	Abreviews	Notes
-------------	-----------	-------

IHC-P

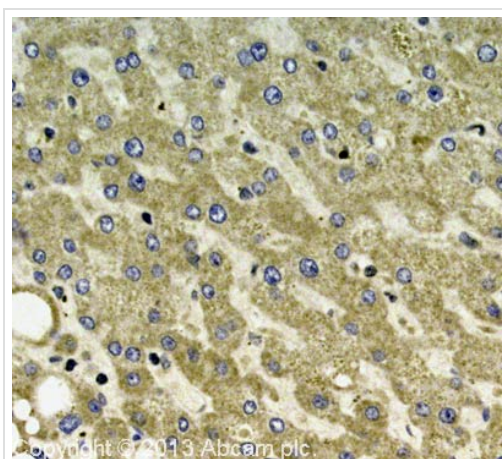
Application notes

ELISA: 1/1000 - 1/5000.
 WB: 1/1000 - 1/5000. Detects bands of approximately 33, 75 and 88 kDa (predicted molecular weight: 192 kDa).

Not yet tested in other applications.
 Optimal dilutions/concentrations should be determined by the end user.

Target

Images



Immunohistochemistry (Formalin/PFA-fixed paraffin-embedded sections) - Anti-C4 antibody (ab48582)

IHC image of C4 staining in Human Liver formalin fixed paraffin embedded tissue section, performed on a Leica Bond™ system using the standard protocol F. The section was pre-treated using heat mediated antigen retrieval with sodium citrate buffer (pH6, epitope retrieval solution 1) for 20 mins. The section was then incubated with ab48582, 5 µg/ml, for 15 mins at room temperature and detected using an HRP conjugated compact polymer system. DAB was used as the chromogen. The section was then counterstained with haematoxylin and mounted with DPX.

For other IHC staining systems (automated and non-automated) customers should optimize variable parameters such as antigen retrieval conditions, primary antibody concentration and antibody incubation times.

Please note: All products are "FOR RESEARCH USE ONLY AND ARE NOT INTENDED FOR DIAGNOSTIC OR THERAPEUTIC USE"

Our Promise to you: Quality guaranteed and expert technical support

- Replacement or refund for products not performing as stated on the datasheet
- Valid for 12 months from date of delivery
- Response to your inquiry within 24 hours

- We provide support in Chinese, English, French, German, Japanese and Spanish
- Extensive multi-media technical resources to help you
- We investigate all quality concerns to ensure our products perform to the highest standards

If the product does not perform as described on this datasheet, we will offer a refund or replacement. For full details of the Abpromise, please visit <https://www.abcam.com/abpromise> or contact our technical team.

Terms and conditions

- Guarantee only valid for products bought direct from Abcam or one of our authorized distributors