

## Product datasheet

# Anti-C7orf36 antibody ab121595

[3 Images](#)

### Overview

<b>Product name</b>	Anti-C7orf36 antibody
<b>Description</b>	Rabbit polyclonal to C7orf36
<b>Host species</b>	Rabbit
<b>Tested applications</b>	<b>Suitable for:</b> WB, IHC-P, ICC/IF
<b>Species reactivity</b>	<b>Reacts with:</b> Human
<b>Immunogen</b>	antigen sequence: LKHLKSITPP SHVVDLLDSI EDMDLCHVVP AEKKIDEAKD ERLCENNAEF NKNCSKSHSG IDCSYVECCR TQEHASENP SPT, corresponding to amino acids 118-200 of Human C7orf36. <a href="#">Run BLAST with ExPASy</a> <a href="#">Run BLAST with NCBI</a>
<b>Positive control</b>	Human cerebral cortex tissue; HEK293T cells transfected with C7orf36.

### Properties

<b>Form</b>	Liquid
<b>Storage instructions</b>	Shipped at 4°C. Upon delivery aliquot and store at -20°C. Avoid freeze / thaw cycles.
<b>Storage buffer</b>	pH: 7.20 Preservative: 0.02% Sodium azide Constituents: 59% PBS, 40% Glycerol
<b>Purity</b>	Immunogen affinity purified
<b>Clonality</b>	Polyclonal
<b>Isotype</b>	IgG

### Applications

Our [Abpromise guarantee](#) covers the use of **ab121595** in the following tested applications.

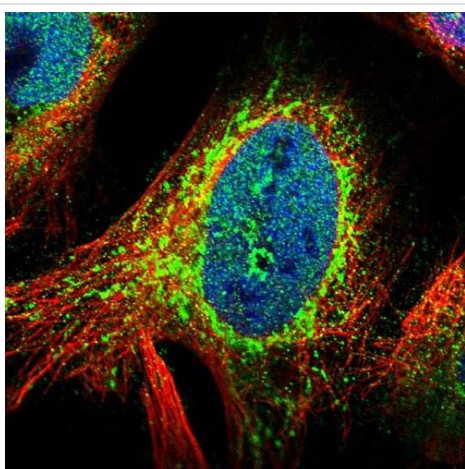
The application notes include recommended starting dilutions; optimal dilutions/concentrations should be determined by the end user.

Application	Abreviews	Notes
WB		1/250 - 1/500.

Application	Abreviews	Notes
IHC-P		1/50 - 1/200. Perform heat mediated antigen retrieval with citrate buffer pH 6 before commencing with IHC staining protocol.
ICC/IF		Use a concentration of 1 - 4 µg/ml. Recommend PFA Fixation and Triton X-100 treatment

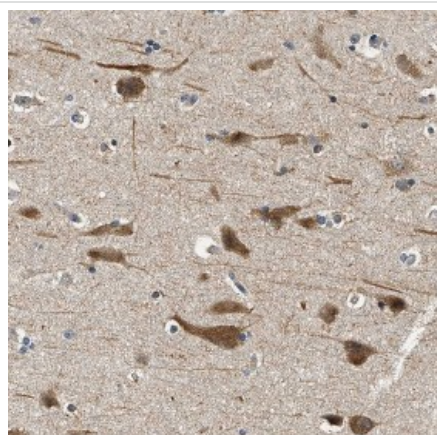
## Target

## Images



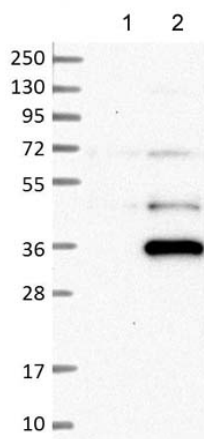
Immunofluorescent staining of Human cell line U-2 OS shows positivity in nucleus but not nucleoli, cytoplasm and mitochondria. Recommended concentration of ab121595 1-4 µg/ml. Cells treated with PFA/Triton X-100.

Immunocytochemistry/ Immunofluorescence - Anti-C7orf36 antibody (ab121595)



ab121595 at 1/50 dilution staining C7orf36 in Paraffin-embedded Human cerebral cortex tissue by Immunohistochemistry.

Immunohistochemistry (Formalin/PFA-fixed paraffin-embedded sections) - Anti-C7orf36 antibody (ab121595)



Western blot - Anti-C7orf36 antibody (ab121595)

**All lanes :** Anti-C7orf36 antibody (ab121595)

at 1/250 dilution

**Lane 1 :** Negative control (vector only transfected HEK293T lysate)

**Lane 2 :** Over-expression Lysate (Co-expressed with a C-terminal myc-DDK tag (~3.1 kDa) in mammalian HEK293T cells)

**Please note:** All products are "FOR RESEARCH USE ONLY AND ARE NOT INTENDED FOR DIAGNOSTIC OR THERAPEUTIC USE"

### Our Abpromise to you: Quality guaranteed and expert technical support

- Replacement or refund for products not performing as stated on the datasheet
- Valid for 12 months from date of delivery
- Response to your inquiry within 24 hours
- We provide support in Chinese, English, French, German, Japanese and Spanish
- Extensive multi-media technical resources to help you
- We investigate all quality concerns to ensure our products perform to the highest standards

If the product does not perform as described on this datasheet, we will offer a refund or replacement. For full details of the Abpromise, please visit <https://www.abcam.com/abpromise> or contact our technical team.

### Terms and conditions

- Guarantee only valid for products bought direct from Abcam or one of our authorized distributors