

## Product datasheet

# Anti-CC2D1A antibody ab70375

[3 Images](#)

### Overview

<b>Product name</b>	Anti-CC2D1A antibody
<b>Description</b>	Rabbit polyclonal to CC2D1A
<b>Host species</b>	Rabbit
<b>Tested applications</b>	<b>Suitable for:</b> WB, IP, IHC-P, ICC
<b>Species reactivity</b>	<b>Reacts with:</b> Mouse, Human <b>Predicted to work with:</b> Chimpanzee, Gorilla, Orangutan
<b>Immunogen</b>	Synthetic peptide corresponding to a region between residues 1 and 50 of human CC2D1A
<b>Positive control</b>	Whole cell lysate from 293T cells. NETN or RIPA lysate from HeLa cells.

### Properties

<b>Form</b>	Liquid
<b>Storage instructions</b>	Shipped at 4°C. Upon delivery aliquot and store at -20°C. Avoid freeze / thaw cycles.
<b>Storage buffer</b>	Preservative: 0.09% Sodium azide Constituents: 1.815% Tris, 1.764% Sodium citrate, 0.021% PBS
<b>Purity</b>	Immunogen affinity purified
<b>Clonality</b>	Polyclonal
<b>Isotype</b>	IgG

### Applications

Our [Abpromise guarantee](#) covers the use of **ab70375** in the following tested applications.

The application notes include recommended starting dilutions; optimal dilutions/concentrations should be determined by the end user.

Application	Abreviews	Notes
WB		1/1000 - 1/10000. Detects a band of approximately 130 kDa (predicted molecular weight: 104 kDa).
IP		Use at 3-10 µg/mg of lysate.

Application	Abreviews	Notes
IHC-P		1/500 - 1/2000. Perform heat mediated antigen retrieval with Tris/EDTA buffer pH 9.0 before commencing with IHC staining protocol.
ICC		1/100.

## Target

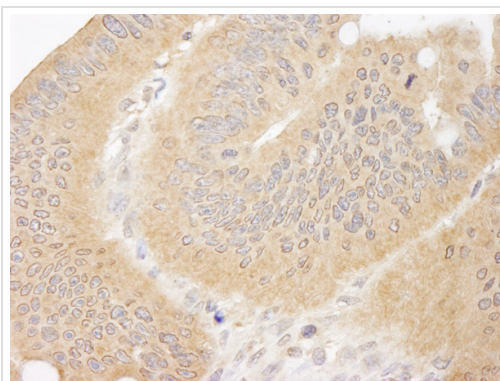
### Relevance

CC2D1A belongs to the CC2D1 family. It contains one C2 domain. It is a transcription factor that binds specifically to the FRE (five repressor element) and represses HTR1A gene transcription in neuronal cells. The combination of calcium and ATP specifically inactivates the binding with FRE. CC2D1A may play a role in the altered regulation of HTR1A associated with anxiety and major depression. It also mediates HDAC-independent repression of HTR1A promoter in neuronal cell. There are three named isoforms. Defects in CC2D1A are the cause of non-syndromic mental retardation autosomal recessive type 3 (MRT3). Patients display severe mental retardation and psychomotor development delay in early childhood. Non-syndromic mental retardation patients do not manifest other clinical signs.

### Cellular localization

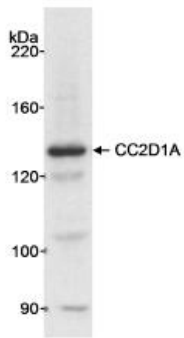
Cytoplasm. Nucleus.

## Images



Immunohistochemistry (Formalin/PFA-fixed paraffin-embedded sections) analysis of human colon carcinoma tissue labelling CC2D1A with ab70375 at 1/1000 (1µg/ml). Detection: DAB.

Immunohistochemistry (Formalin/PFA-fixed paraffin-embedded sections) - Anti-CC2D1A antibody (ab70375)



Western blot - Anti-CC2D1A antibody (ab70375)

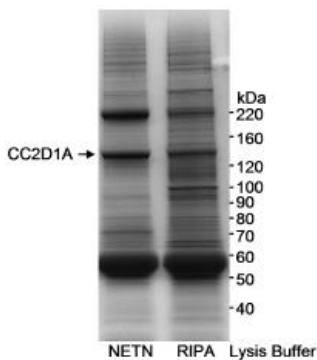
Anti-CC2D1A antibody (ab70375) at 0.3 µg/ml + Whole cell lysate from 293T cells at 50 µg

**Predicted band size:** 104 kDa

**Observed band size:** 130 kDa

[why is the actual band size different from the predicted?](#)

**Additional bands at:** 105 kDa, 120 kDa, 90 kDa. We are unsure as to the identity of these extra bands.



Immunoprecipitation - Anti-CC2D1A antibody (ab70375)

Detection of Human CC2D1A by Immunoprecipitation. ab70375 used at 20 µg/50 mg NETN or RIPA lysate from HeLa cells.

Immunoprecipitate was resolved by SDS-PAGE and the band that is CC2D1A was confirmed by mass spectrometry.

**Please note:** All products are "FOR RESEARCH USE ONLY AND ARE NOT INTENDED FOR DIAGNOSTIC OR THERAPEUTIC USE"

### Our Abpromise to you: Quality guaranteed and expert technical support

- Replacement or refund for products not performing as stated on the datasheet
- Valid for 12 months from date of delivery
- Response to your inquiry within 24 hours
- We provide support in Chinese, English, French, German, Japanese and Spanish
- Extensive multi-media technical resources to help you
- We investigate all quality concerns to ensure our products perform to the highest standards

If the product does not perform as described on this datasheet, we will offer a refund or replacement. For full details of the Abpromise, please visit <https://www.abcam.com/abpromise> or contact our technical team.

### Terms and conditions

- Guarantee only valid for products bought direct from Abcam or one of our authorized distributors