

## Product datasheet

# Anti-CCDC125 antibody ab122750

[3 Images](#)

### Overview

<b>Product name</b>	Anti-CCDC125 antibody
<b>Description</b>	Rabbit polyclonal to CCDC125
<b>Host species</b>	Rabbit
<b>Tested applications</b>	<b>Suitable for:</b> IHC-P, WB, ICC/IF
<b>Species reactivity</b>	<b>Reacts with:</b> Human
<b>Immunogen</b>	antigen sequence: VLNQRYLEAL AMLDIKQQKM AQENMCCDKS GFAEASGLEL AVLGACLCHG PGGNPCSCAR MAASTRKLLL QLKQELEILQ KSKEEAYVMA DAFRIAFE, corresponding to amino acids 234-331 of Human CCDC125. <a href="#">Run BLAST with ExPASy</a> <a href="#">Run BLAST with NCBI</a>
<b>Positive control</b>	Human colon tissue; U 2 OS cells; RT 4, U 251 MG, Human liver and tonsil lysates.

### Properties

<b>Form</b>	Liquid
<b>Storage instructions</b>	Shipped at 4°C. Store at -20°C or -80°C. Avoid freeze / thaw cycle. Store undiluted.
<b>Storage buffer</b>	pH: 7.20 Preservative: 0.02% Sodium azide Constituents: 59% PBS, 40% Glycerol
<b>Purity</b>	Immunogen affinity purified
<b>Clonality</b>	Polyclonal
<b>Isotype</b>	IgG

### Applications

Our [Abpromise guarantee](#) covers the use of **ab122750** in the following tested applications.

The application notes include recommended starting dilutions; optimal dilutions/concentrations should be determined by the end user.

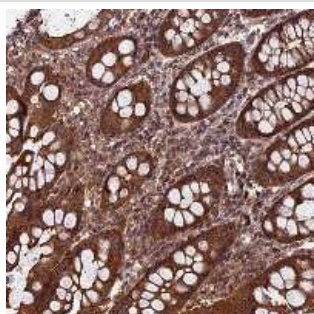
Application	Abreviews	Notes
IHC-P		1/20 - 1/50. Perform heat mediated antigen retrieval with citrate buffer pH 6 before commencing with IHC staining protocol.

Application	Abreviews	Notes
WB		1/250 - 1/500.
ICC/IF		Use a concentration of 1 - 4 µg/ml. using PFA/Triton X-100 Fixation/Permeabilization.

## Target

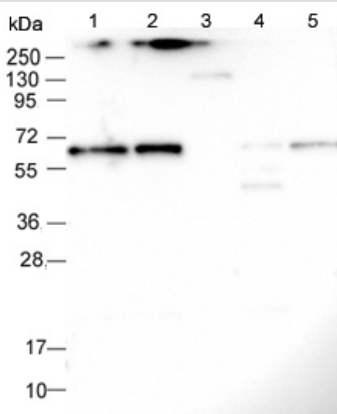
<b>Function</b>	May be involved in the regulation of cell migration.
<b>Cellular localization</b>	Cytoplasm.

## Images



ab122750 at 1/20 dilution, staining CCDC125 in Paraffin-embedded Human colon tissue by Immunohistochemistry.

Immunohistochemistry (Formalin/PFA-fixed paraffin-embedded sections) - Anti-CCDC125 antibody (ab122750)



Western blot - Anti-CCDC125 antibody (ab122750)

**All lanes** : Anti-CCDC125 antibody (ab122750) at 1/250 dilution

**Lane 1** : RT 4 lysate

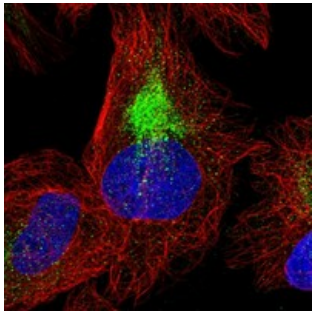
**Lane 2** : U 251 MG lysate

**Lane 3** : Human Plasma lysate

**Lane 4** : Human liver lysate

**Lane 5** : Human tonsil lysate

Developed using the ECL technique.



ab122750 at 4  $\mu\text{g/ml}$  staining CCDC125 in PFA/Triton X-100 fixed/permeabilized U 2 OS cells by Immunofluorescence (green).

Immunocytochemistry/ Immunofluorescence - Anti-CCDC125 antibody (ab122750)

**Please note:** All products are "FOR RESEARCH USE ONLY AND ARE NOT INTENDED FOR DIAGNOSTIC OR THERAPEUTIC USE"

### Our Abpromise to you: Quality guaranteed and expert technical support

- Replacement or refund for products not performing as stated on the datasheet
- Valid for 12 months from date of delivery
- Response to your inquiry within 24 hours
- We provide support in Chinese, English, French, German, Japanese and Spanish
- Extensive multi-media technical resources to help you
- We investigate all quality concerns to ensure our products perform to the highest standards

If the product does not perform as described on this datasheet, we will offer a refund or replacement. For full details of the Abpromise, please visit <https://www.abcam.com/abpromise> or contact our technical team.

### Terms and conditions

- Guarantee only valid for products bought direct from Abcam or one of our authorized distributors