


Product datasheet

Anti-CCR11 antibody ab74806

[1 References](#) [2 Images](#)

Overview

Product name	Anti-CCR11 antibody
Description	Rabbit polyclonal to CCR11
Host species	Rabbit
Tested applications	Suitable for: ELISA, WB, ICC/IF
Species reactivity	Reacts with: Human Predicted to work with: Mouse 
Immunogen	Synthetic peptide derived from the C-terminal region of human CCR11.
Positive control	HepG2 cell extracts. MCF7 cells.

Properties

Form	Liquid
Storage instructions	Shipped at 4°C. Upon delivery aliquot and store at -20°C. Avoid freeze / thaw cycles.
Storage buffer	Preservative: 0.02% Sodium Azide Constituents: 50% Glycerol, PBS (without Mg ²⁺ and Ca ²⁺), 150mM Sodium chloride, pH 7.4
Purity	Immunogen affinity purified
Clonality	Polyclonal
Isotype	IgG

Applications

Our [Abpromise guarantee](#) covers the use of **ab74806** in the following tested applications.

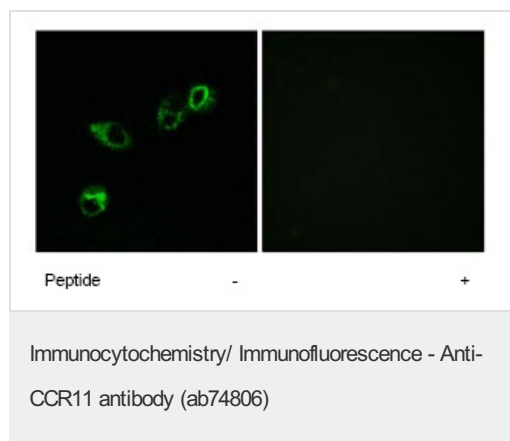
The application notes include recommended starting dilutions; optimal dilutions/concentrations should be determined by the end user.

Application	Abreviews	Notes
ELISA		1/60000.
WB		1/500 - 1/1000. Predicted molecular weight: 40 kDa.
ICC/IF		1/500 - 1/1000.

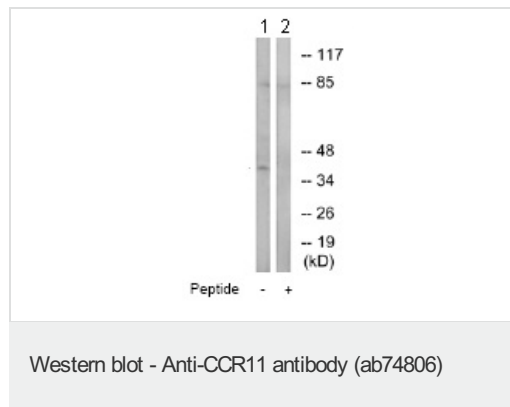
Target

Function	Receptor for CCL2, CCL8, CCL13, CCL19, CCL21 and CCL25.
Tissue specificity	Predominantly expressed in heart. Lower expression in lung, pancreas, spleen, colon, skeletal muscle and small intestine.
Sequence similarities	Belongs to the G-protein coupled receptor 1 family.
Cellular localization	Cell membrane.

Images



ab74806 at 1/500 dilution staining CCR11 in MCF7 cells by Immunofluorescence, in the absence or presence of the immunising peptide.



All lanes : Anti-CCR11 antibody (ab74806) at 1/500 dilution

Lane 1 : HepG2 cell extracts

Lane 2 : HepG2 cell extracts with immunising peptide at 10 µg

Lysates/proteins at 30 µg per lane.

Predicted band size: 40 kDa

Observed band size: 40 kDa

Additional bands at: 85 kDa. We are unsure as to the identity of these extra bands.

Please note: All products are "FOR RESEARCH USE ONLY AND ARE NOT INTENDED FOR DIAGNOSTIC OR THERAPEUTIC USE"

Our Abpromise to you: Quality guaranteed and expert technical support

- Replacement or refund for products not performing as stated on the datasheet
- Valid for 12 months from date of delivery

- Response to your inquiry within 24 hours
- We provide support in Chinese, English, French, German, Japanese and Spanish
- Extensive multi-media technical resources to help you
- We investigate all quality concerns to ensure our products perform to the highest standards

If the product does not perform as described on this datasheet, we will offer a refund or replacement. For full details of the Abpromise, please visit <https://www.abcam.com/abpromise> or contact our technical team.

Terms and conditions

- Guarantee only valid for products bought direct from Abcam or one of our authorized distributors