

## Product datasheet

# Anti-CD10 antibody [56C6] ab951

★★★★☆ 5 Abreviews 26 References 2 Images

### Overview

---

<b>Product name</b>	Anti-CD10 antibody [56C6]
<b>Description</b>	Mouse monoclonal [56C6] to CD10
<b>Host species</b>	Mouse
<b>Tested applications</b>	<b>Suitable for:</b> WB, IHC-P
<b>Species reactivity</b>	<b>Reacts with:</b> Cat, Dog, Human <b>Predicted to work with:</b> Mouse
<b>Immunogen</b>	Prokaryotic recombinant fusion protein corresponding to the external of the CD10 glycoprotein
<b>Positive control</b>	IHC-P: MDA-MB-231 human breast cancer cells grown in mouse. Renal cell carcinoma tissue.
<b>General notes</b>	We have mixed customer feedback about the mouse specificity, which is why we no longer guarantee this species. Contact scientific support team for any inquiry.  This antibody works well when used in combination with <a href="#">ab972</a> - Antigen retrieval solution, heat mediated high pH 9.5.

### Properties

---

<b>Form</b>	Liquid
<b>Storage instructions</b>	Shipped at 4°C. Store at +4°C short term (1-2 weeks). Store at -20°C or -80°C. Avoid freeze / thaw cycle.
<b>Storage buffer</b>	Preservative: 0.1% Sodium Azide Constituents: PBS, Carrier protein, Renoir Red Diluent, pH 7.3
<b>Purity</b>	Tissue culture supernatant
<b>Clonality</b>	Monoclonal
<b>Clone number</b>	56C6
<b>Isotype</b>	IgG1

### Applications

---

Our [Abpromise guarantee](#) covers the use of **ab951** in the following tested applications.

The application notes include recommended starting dilutions; optimal dilutions/concentrations should be determined by the end user.

Application	Abreviews	Notes
WB	★★★★★	1/1000. Predicted molecular weight: 85 kDa. PubMed: 26074811
IHC-P	★★★★☆	1/25 - 1/50. Perform heat mediated antigen retrieval before commencing with IHC staining protocol. For an ABC system, incubate for 30-60 minutes at RT. With high pH retrieval solutions, some tissues may require an avidin-biotin block. Overstaining with hematoxylin can mask staining, thus reducing overall contrast and making interpretation difficult. It is therefore recommended that a light hematoxylin stain be applied. <b>Recently, CD10 has been used in a panel for mantle cell lymphoma with cyclin D1(+), CD43 (+), CD5 (+), IgM (+), CD23 (-) and CD10 (-).</b>

## Target

### Function

Thermolysin-like specificity, but is almost confined on acting on polypeptides of up to 30 amino acids. Biologically important in the destruction of opioid peptides such as Met- and Leu-enkephalins by cleavage of a Gly-Phe bond. Able to cleave angiotensin-1, angiotensin-2 and angiotensin 1-9. Involved in the degradation of atrial natriuretic factor (ANF). Displays UV-inducible elastase activity toward skin preelastic and elastic fibers.

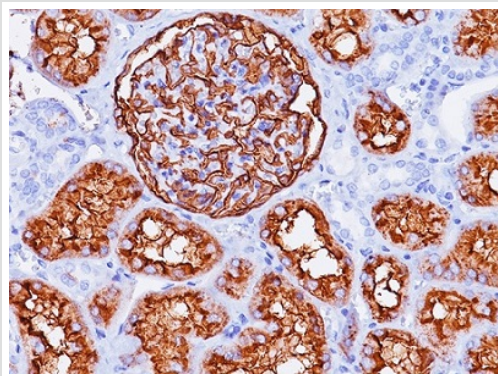
### Sequence similarities

Belongs to the peptidase M13 family.

### Cellular localization

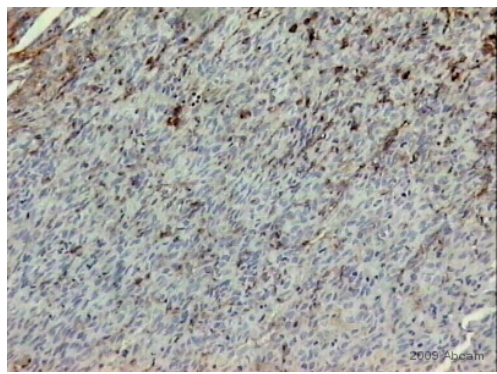
Cell membrane.

## Images



Paraffin embedded renal cell carcinoma tissue stained for CD10 with ab951 (1/25 dilution) in immunohistochemical analysis.

Immunohistochemistry (Formalin/PFA-fixed paraffin-embedded sections) - Anti-CD10 antibody [56C6] (ab951)



Immunohistochemistry (Formalin/PFA-fixed paraffin-embedded sections) - Anti-CD10 antibody [56C6] (ab951)

This image is courtesy of an anonymous Abreview.

ab951 at 1/20 dilution staining CD10 in MDA-MB-231 human breast cancer cells grown in mouse by immunohistochemistry (formalin/PFA-fixed paraffin-embedded sections). Sections were paraformaldehyde fixed prior to blocking in 10% casein for 30 minutes at 22°C and then incubated with ab951 for 17 hours at 4°C. A rabbit polyclonal to mouse Ig, diluted 1/200 was used as the secondary antibody.

**Please note:** All products are "FOR RESEARCH USE ONLY AND ARE NOT INTENDED FOR DIAGNOSTIC OR THERAPEUTIC USE"

### Our Abpromise to you: Quality guaranteed and expert technical support

- Replacement or refund for products not performing as stated on the datasheet
- Valid for 12 months from date of delivery
- Response to your inquiry within 24 hours
- We provide support in Chinese, English, French, German, Japanese and Spanish
- Extensive multi-media technical resources to help you
- We investigate all quality concerns to ensure our products perform to the highest standards

If the product does not perform as described on this datasheet, we will offer a refund or replacement. For full details of the Abpromise, please visit <https://www.abcam.com/abpromise> or contact our technical team.

### Terms and conditions

- Guarantee only valid for products bought direct from Abcam or one of our authorized distributors