

## Product datasheet

# Anti-CD10 antibody [SN5c] $\alpha$ b34199

[1 Abreviews](#) [4 References](#) [1 Image](#)

### Overview

<b>Product name</b>	Anti-CD10 antibody [SN5c]
<b>Description</b>	Mouse monoclonal [SN5c] to CD10
<b>Host species</b>	Mouse
<b>Tested applications</b>	<b>Suitable for:</b> WB, IP, IHC-Fr, Flow Cyt
<b>Species reactivity</b>	<b>Reacts with:</b> Human
<b>Immunogen</b>	Partially purified cell membrane antigens from fresh leukemia cells.
<b>Positive control</b>	human peripheral blood granulocytes

### Properties

<b>Form</b>	Liquid
<b>Storage instructions</b>	Shipped at 4°C. Upon delivery aliquot and store at -20°C. Avoid freeze / thaw cycles.
<b>Storage buffer</b>	Preservative: None Constituents: PBS, pH 7.4
<b>Purity</b>	Protein G purified
<b>Purification notes</b>	Purified IgG prepared by affinity chromatography on Protein G from tissue culture supernatant
<b>Clonality</b>	Monoclonal
<b>Clone number</b>	SN5c
<b>Myeloma</b>	P3-NS1/1-Ag4-1
<b>Isotype</b>	IgG1

### Applications

Our [Abpromise guarantee](#) covers the use of **ab34199** in the following tested applications.

The application notes include recommended starting dilutions; optimal dilutions/concentrations should be determined by the end user.

Application	Abreviews	Notes
WB		Use at an assay dependent concentration. Predicted molecular weight: 85 kDa.

Application	Abreviews	Notes
IP		Use at an assay dependent concentration.
IHC-Fr		Use at an assay dependent concentration.
Flow Cyt		Use 10µl for 10 <sup>6</sup> cells. <a href="#">ab170190</a> - Mouse monoclonal IgG1, is suitable for use as an isotype control with this antibody.

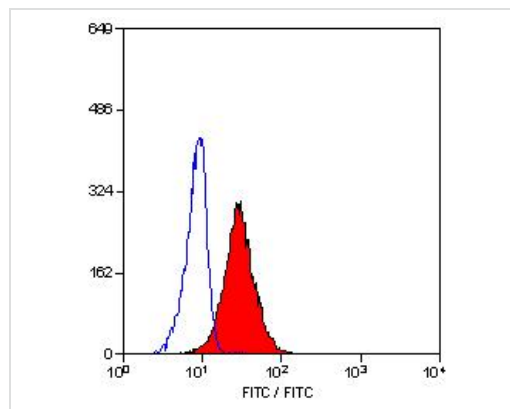
## Target

**Function** Thermolysin-like specificity, but is almost confined on acting on polypeptides of up to 30 amino acids. Biologically important in the destruction of opioid peptides such as Met- and Leu-enkephalins by cleavage of a Gly-Phe bond. Able to cleave angiotensin-1, angiotensin-2 and angiotensin 1-9. Involved in the degradation of atrial natriuretic factor (ANF). Displays UV-inducible elastase activity toward skin preelastic and elastic fibers.

**Sequence similarities** Belongs to the peptidase M13 family.

**Cellular localization** Cell membrane.

## Images



ab34199, Using Neat dilution, Staining of human peripheral blood granulocytes by Flow Cytometry.

Flow Cytometry - Anti-CD10 antibody [SN5c]  
(ab34199)

**Please note:** All products are "FOR RESEARCH USE ONLY AND ARE NOT INTENDED FOR DIAGNOSTIC OR THERAPEUTIC USE"

## Our Abpromise to you: Quality guaranteed and expert technical support

- Replacement or refund for products not performing as stated on the datasheet
- Valid for 12 months from date of delivery
- Response to your inquiry within 24 hours

- We provide support in Chinese, English, French, German, Japanese and Spanish
- Extensive multi-media technical resources to help you
- We investigate all quality concerns to ensure our products perform to the highest standards

If the product does not perform as described on this datasheet, we will offer a refund or replacement. For full details of the Abpromise, please visit <https://www.abcam.com/abpromise> or contact our technical team.

### **Terms and conditions**

---

- Guarantee only valid for products bought direct from Abcam or one of our authorized distributors