

## Product datasheet

# Anti-CD276 antibody [6A1] ab105922

★★★★★ 2 Abreviews 2 References 5 Images

### Overview

<b>Product name</b>	Anti-CD276 antibody [6A1]
<b>Description</b>	Mouse monoclonal [6A1] to CD276
<b>Host species</b>	Mouse
<b>Tested applications</b>	<b>Suitable for:</b> WB, IHC-P, ELISA, Flow Cyt
<b>Species reactivity</b>	<b>Reacts with:</b> Human
<b>Immunogen</b>	Purified recombinant fragment of Human CD276 expressed in E. Coli.
<b>Positive control</b>	WB: HEK293 cell lysate IHC-P: Human cervical cancer and ovarian cancer tissues FC: PC-3 cells
<b>General notes</b>	This product was changed from ascites to supernatant. Lot no's high than GR209552-21 are from Tissue Culture Supernatant

### Properties

<b>Form</b>	Liquid
<b>Storage instructions</b>	Shipped at 4°C. Store at +4°C short term (1-2 weeks). Store at -20°C long term.
<b>Storage buffer</b>	Preservative: 0.05% Sodium azide Constituent: PBS
<b>Purity</b>	Protein G purified
<b>Purification notes</b>	Purified from tissue culture supernatant.
<b>Clonality</b>	Monoclonal
<b>Clone number</b>	6A1
<b>Isotype</b>	IgG1

### Applications

Our [Abpromise guarantee](#) covers the use of **ab105922** in the following tested applications.

The application notes include recommended starting dilutions; optimal dilutions/concentrations should be determined by the end user.

Application	Abreviews	Notes
WB		1/200 - 1/1000. Predicted molecular weight: 57 kDa.

Application	Abreviews	Notes
IHC-P	★★★★★	1/200 - 1/1000.
ELISA		1/10000.
Flow Cyt		1/200 - 1/400. <a href="#">ab170190</a> - Mouse monoclonal IgG1, is suitable for use as an isotype control with this antibody.

## Target

### Function

May participate in the regulation of T-cell-mediated immune response. May play a protective role in tumor cells by inhibiting natural-killer mediated cell lysis as well as a role of marker for detection of neuroblastoma cells. May be involved in the development of acute and chronic transplant rejection and in the regulation of lymphocytic activity at mucosal surfaces. Could also play a key role in providing the placenta and fetus with a suitable immunological environment throughout pregnancy. Both isoform 1 and isoform 2 appear to be redundant in their ability to modulate CD4 T-cell responses. Isoform 2 is shown to enhance the induction of cytotoxic T-cells and selectively stimulates interferon gamma production in the presence of T-cell receptor signaling.

### Tissue specificity

Ubiquitous but not detectable in peripheral blood lymphocytes or granulocytes. Weakly expressed in resting monocytes. Expressed in dendritic cells derived from monocytes. Expressed in epithelial cells of sinonasal tissue. Expressed in extravillous trophoblast cells and Hofbauer cells of the first trimester placenta and term placenta.

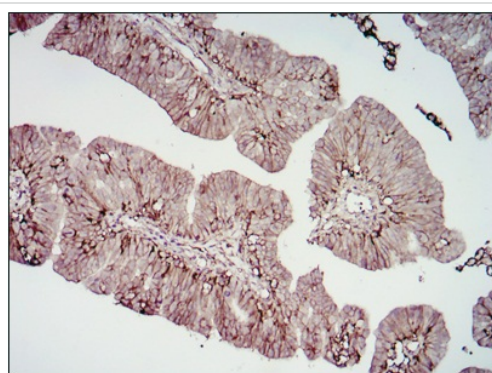
### Sequence similarities

Belongs to the immunoglobulin superfamily. BTN/MOG family.  
Contains 2 Ig-like C2-type (immunoglobulin-like) domains.  
Contains 2 Ig-like V-type (immunoglobulin-like) domains.

### Cellular localization

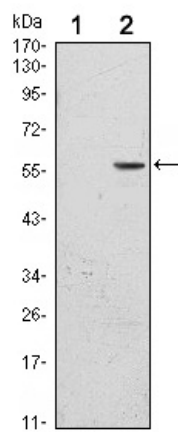
Membrane.

## Images



ab105922, at a 1/200 dilution, staining CD276 in paraffin-embedded Human ovarian cancer tissues.

Immunohistochemistry (Formalin/PFA-fixed paraffin-embedded sections) - Anti-CD276 antibody [6A1] (ab105922)



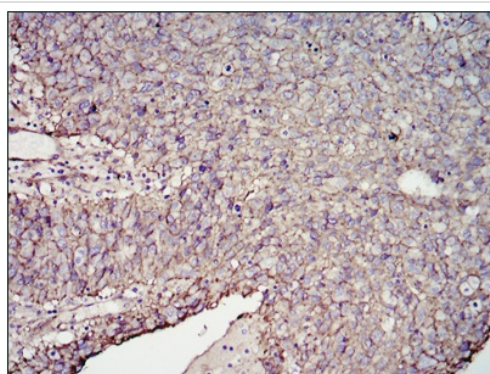
Western blot - Anti-CD276 antibody [6A1]  
(ab105922)

**All lanes :** Anti-CD276 antibody [6A1] (ab105922) at 1/200 dilution

**Lane 1 :** HEK293 cell lysate

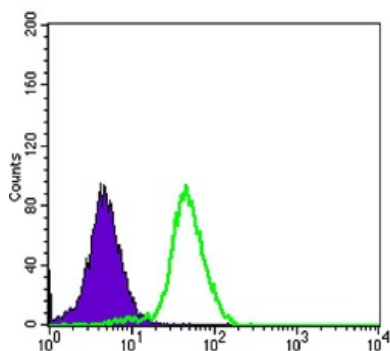
**Lane 2 :** Transfected HEK293 cell lysate

**Predicted band size:** 57 kDa



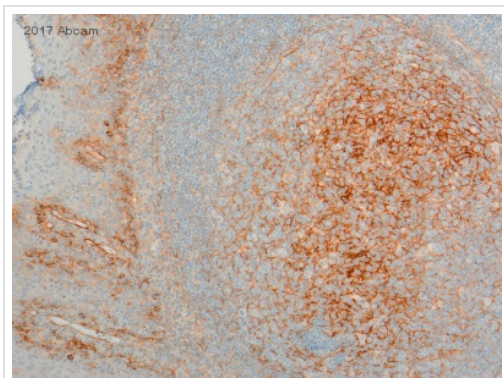
Immunohistochemistry (Formalin/PFA-fixed paraffin-embedded sections) - Anti-CD276 antibody [6A1]  
(ab105922)

ab105922, at a 1/200 dilution, staining CD276 in paraffin-embedded Human cervical cancer tissues.



Flow Cytometry - Anti-CD276 antibody [6A1]  
(ab105922)

Flow cytometric analysis of PC-3 cells using ab105922 (green) and negative control (purple).



Formaldehyde-fixed, paraffin-embedded human tonsil tissue stained for CD276 using ab105922 at 1/800 dilution in immunohistochemical analysis.

Immunohistochemistry (Formalin/PFA-fixed paraffin-embedded sections) - Anti-CD276 antibody [6A1] (ab105922)

This image is courtesy of an anonymous Abreview.

**Please note:** All products are "FOR RESEARCH USE ONLY AND ARE NOT INTENDED FOR DIAGNOSTIC OR THERAPEUTIC USE"

### Our Abpromise to you: Quality guaranteed and expert technical support

---

- Replacement or refund for products not performing as stated on the datasheet
- Valid for 12 months from date of delivery
- Response to your inquiry within 24 hours
- We provide support in Chinese, English, French, German, Japanese and Spanish
- Extensive multi-media technical resources to help you
- We investigate all quality concerns to ensure our products perform to the highest standards

If the product does not perform as described on this datasheet, we will offer a refund or replacement. For full details of the Abpromise, please visit <https://www.abcam.com/abpromise> or contact our technical team.

### Terms and conditions

---

- Guarantee only valid for products bought direct from Abcam or one of our authorized distributors