

Product datasheet

Anti-CD3 antibody [KT3] ab33429

★★★★☆ 3 Abreviews 1 References 1 Image

Overview

Product name	Anti-CD3 antibody [KT3]
Description	Rat monoclonal [KT3] to CD3
Host species	Rat
Tested applications	Suitable for: ICC/IF, Flow Cyt, IHC-Fr Unsuitable for: IHC-P
Species reactivity	Reacts with: Mouse
Immunogen	Tissue/ cell preparation mature T cells (Mouse)
General notes	ab33429 may be used to trigger proliferation and cytotoxicity of CD3 positive cells.

Properties

Form	Liquid
Storage instructions	Shipped at 4°C. Store at +4°C short term (1-2 weeks). Upon delivery aliquot. Store at -20°C long term.
Storage buffer	Preservative: 0.09% Sodium Azide Constituents: PBS, pH 7.4
Purity	Protein G purified
Purification notes	Purified from tissue culture supernatant.
Primary antibody notes	ab33429 may be used to trigger proliferation and cytotoxicity of CD3 positive cells.
Clonality	Monoclonal
Clone number	KT3
Myeloma	NS0
Isotype	IgG2a

Applications

Our [Abpromise guarantee](#) covers the use of **ab33429** in the following tested applications.

The application notes include recommended starting dilutions; optimal dilutions/concentrations should be determined by the end user.

Application	Abreviews	Notes
ICC/IF	★★★★★	Use at an assay dependent concentration.
Flow Cyt		1/100. ab18450 - Rat monoclonal IgG2a, is suitable for use as an isotype control with this antibody.
IHC-Fr	★★★★☆	Use at an assay dependent concentration.

Application notes Is unsuitable for IHC-P.

Target

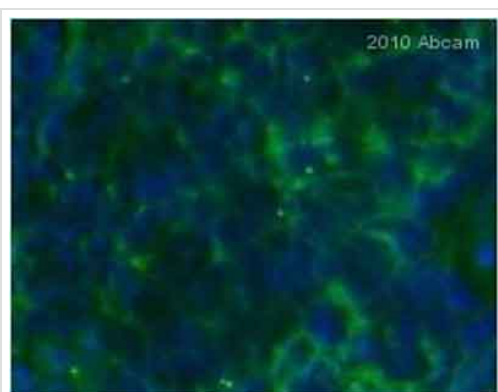
Function The CD3 complex mediates signal transduction.

Involvement in disease Defects in CD3D are a cause of severe combined immunodeficiency autosomal recessive T-cell-negative/B-cell-positive/NK-cell-positive (T(-)/B(+)/NK(+)) SCID [MIM:608971]. A form of severe combined immunodeficiency (SCID), a genetically and clinically heterogeneous group of rare congenital disorders characterized by impairment of both humoral and cell-mediated immunity, leukopenia, and low or absent antibody levels. Patients present in infancy recurrent, persistent infections by opportunistic organisms. The common characteristic of all types of SCID is absence of T-cell-mediated cellular immunity due to a defect in T-cell development.

Sequence similarities Contains 1 ITAM domain.

Cellular localization Membrane.

Images



Immunohistochemistry (Frozen sections) - Anti-CD3 antibody [KT3] (ab33429)
Image courtesy of an anonymous Abreview

ab33429 staining CD3 in mouse spleen tissue by Immunohistochemistry (frozen sections). Tissue was fixed with acetone and then blocked with 5% serum for 1 hour at 25°C followed by incubation with the primary antibody at a 1/250 dilution for 12 hours at 4°C. A goat anti-rabbit IgG conjugated to Alexa Fluor®488 was used as secondary antibody at a 1/250 dilution.

Please note: All products are "FOR RESEARCH USE ONLY AND ARE NOT INTENDED FOR DIAGNOSTIC OR THERAPEUTIC USE"

Our Abpromise to you: Quality guaranteed and expert technical support

- Replacement or refund for products not performing as stated on the datasheet
- Valid for 12 months from date of delivery
- Response to your inquiry within 24 hours

- We provide support in Chinese, English, French, German, Japanese and Spanish
- Extensive multi-media technical resources to help you
- We investigate all quality concerns to ensure our products perform to the highest standards

If the product does not perform as described on this datasheet, we will offer a refund or replacement. For full details of the Abpromise, please visit <https://www.abcam.com/abpromise> or contact our technical team.

Terms and conditions

- Guarantee only valid for products bought direct from Abcam or one of our authorized distributors