


Product datasheet

Anti-CD5 antibody ab61132

1 Image

Overview

<b>Product name</b>	Anti-CD5 antibody
<b>Description</b>	Rabbit polyclonal to CD5
<b>Host species</b>	Rabbit
<b>Specificity</b>	ab61132 detects endogenous levels of total CD5 protein.
<b>Tested applications</b>	<b>Suitable for:</b> ELISA, WB
<b>Species reactivity</b>	<b>Reacts with:</b> Human <b>Predicted to work with:</b> Mouse 
<b>Immunogen</b>	Synthetic non-phosphopeptide derived from human CD5 around the phosphorylation site of tyrosine 453.
<b>Positive control</b>	293 cell extracts treated with PMA (125ng/ml, 30mins).

Properties

<b>Form</b>	Liquid
<b>Storage instructions</b>	Shipped at 4°C. Store at -20°C. Stable for 12 months at -20°C.
<b>Storage buffer</b>	Preservative: 0.02% Sodium Azide Constituents: 50% Glycerol, PBS (without Mg <sup>2+</sup> and Ca <sup>2+</sup> ), 150mM Sodium chloride, pH 7.4
<b>Purity</b>	Immunogen affinity purified
<b>Purification notes</b>	ab61132 was affinity-purified from rabbit antiserum by affinity-chromatography using epitope-specific immunogen.
<b>Clonality</b>	Polyclonal
<b>Isotype</b>	IgG

Applications

Our [Abpromise guarantee](#) covers the use of **ab61132** in the following tested applications.

The application notes include recommended starting dilutions; optimal dilutions/concentrations should be determined by the end user.

Application	Abreviews	Notes
-------------	-----------	-------

ELISA

WB

### Application notes

ELISA: 1/20000.

WB: 1/500 - 1/1000. Detects a band of approximately 55 kDa (predicted molecular weight: 55 kDa).

Not yet tested in other applications.

Optimal dilutions/concentrations should be determined by the end user.

### Target

#### Function

May act as a receptor in regulating T-cell proliferation. CD5 interacts with CD72/LYB-2.

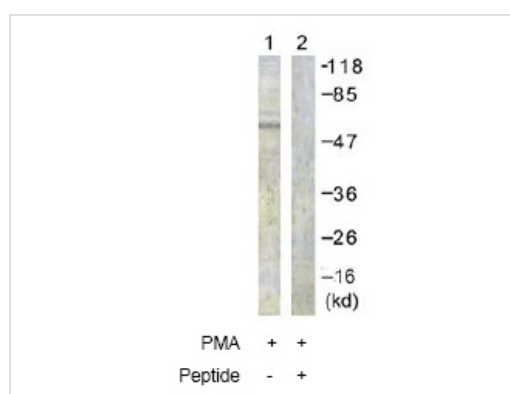
#### Sequence similarities

Contains 3 SRCR domains.

#### Cellular localization

Membrane.

### Images



Western blot - Anti-CD5 antibody (ab61132)

**All lanes :** Anti-CD5 antibody (ab61132) at 1/500 dilution

**Lane 1 :** 293 cell extracts treated with PMA (125ng/ml, 30mins)

**Lane 2 :** 293 cell extracts treated with PMA (125ng/ml, 30mins) with immunising peptide

**Predicted band size:** 55 kDa

**Observed band size:** 55 kDa

**Please note:** All products are "FOR RESEARCH USE ONLY AND ARE NOT INTENDED FOR DIAGNOSTIC OR THERAPEUTIC USE"

### Our Abpromise to you: Quality guaranteed and expert technical support

- Replacement or refund for products not performing as stated on the datasheet
- Valid for 12 months from date of delivery
- Response to your inquiry within 24 hours
- We provide support in Chinese, English, French, German, Japanese and Spanish
- Extensive multi-media technical resources to help you

- We investigate all quality concerns to ensure our products perform to the highest standards

If the product does not perform as described on this datasheet, we will offer a refund or replacement. For full details of the Abpromise, please visit <https://www.abcam.com/abpromise> or contact our technical team.

### **Terms and conditions**

---

- Guarantee only valid for products bought direct from Abcam or one of our authorized distributors