

Product datasheet

Anti-CDX2 antibody [CDX2-88], prediluted ab86949

[2 References](#) [2 Images](#)

Overview

Product name	Anti-CDX2 antibody [CDX2-88], prediluted
Description	Mouse monoclonal [CDX2-88] to CDX2, prediluted
Host species	Mouse
Tested applications	Suitable for: IHC-P, Flow Cyt
Species reactivity	Reacts with: Rat, Dog, Human
Immunogen	CDX2 protein (Human)
Positive control	Colon cancer Normal Tissue: Colon Abnormal Tissue: Colon cancer, cyst adenocarcinoma and mucinous ovarian cancer

Properties

Form	Prediluted
Storage instructions	Shipped at 4°C. Store at +4°C.
Storage buffer	Preservative: <0.1% Sodium Azide
Clonality	Monoclonal
Clone number	CDX2-88
Isotype	IgG1

Applications

Our [Abpromise guarantee](#) covers the use of **ab86949** in the following tested applications.

The application notes include recommended starting dilutions; optimal dilutions/concentrations should be determined by the end user.

Application	Abreviews	Notes
IHC-P		1/1. Perform heat mediated antigen retrieval before commencing with IHC staining protocol. Primary Antibody: incubate for 30 minutes at RT.

Application	Abreviews	Notes
-------------	-----------	-------

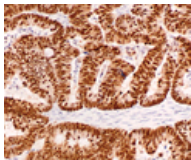
Flow Cyt		Use at an assay dependent concentration. Use Neat
----------	--	--

[ab170190](#) - Mouse monoclonal IgG1, is suitable for use as an isotype control with this antibody.

Target

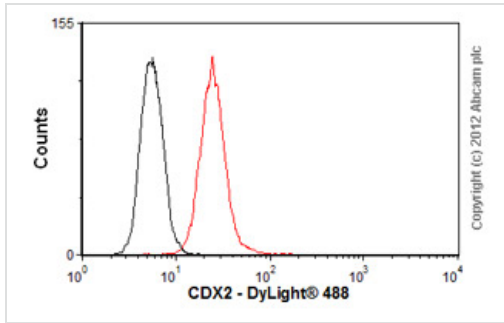
Function	Involved in the transcriptional regulation of multiple genes expressed in the intestinal epithelium. Important in broad range of functions from early differentiation to maintenance of the intestinal epithelial lining of both the small and large intestine.
Sequence similarities	Belongs to the Caudal homeobox family. Contains 1 homeobox DNA-binding domain.
Post-translational modifications	Phosphorylation of Ser-60 mediates the transactivation capacity.
Cellular localization	Nucleus.

Images



Prediluted ab86949, staining CDX2 in formalin fixed, paraffin embedded Human colon cancer tissue by Immunohistochemistry.

Immunohistochemistry (Formalin/PFA-fixed paraffin-embedded sections) - Anti-CDX2 antibody [CDX2-88], prediluted (ab86949)



Flow Cytometry - Anti-CDX2 antibody [CDX2-88], prediluted (ab86949)

Overlay histogram showing HCT116 cells stained with ab86949 (red line). The cells were fixed with 80% methanol (5 min) and then permeabilized with 0.1% PBS-Tween for 20 min. The cells were then incubated in 1x PBS / 10% normal goat serum / 0.3M glycine to block non-specific protein-protein interactions followed by the antibody (ab86949, neat) for 30 min at 22°C. The secondary antibody used was DyLight® 488 goat anti-mouse IgG (H+L) (ab96879) at 1/500 dilution for 30 min at 22°C. Isotype control antibody (black line) was mouse IgG1 [ICIGG1] (ab91353, 2µg/1x10⁶ cells) used under the same conditions. Acquisition of >5,000 events was performed.

Please note: All products are "FOR RESEARCH USE ONLY AND ARE NOT INTENDED FOR DIAGNOSTIC OR THERAPEUTIC USE"

Our Abpromise to you: Quality guaranteed and expert technical support

- Replacement or refund for products not performing as stated on the datasheet
- Valid for 12 months from date of delivery
- Response to your inquiry within 24 hours
- We provide support in Chinese, English, French, German, Japanese and Spanish
- Extensive multi-media technical resources to help you
- We investigate all quality concerns to ensure our products perform to the highest standards

If the product does not perform as described on this datasheet, we will offer a refund or replacement. For full details of the Abpromise, please visit <https://www.abcam.com/abpromise> or contact our technical team.

Terms and conditions

- Guarantee only valid for products bought direct from Abcam or one of our authorized distributors