

## Product datasheet

# Anti-CEND1 antibody [EPR3738] ab92318

Recombinant RabMAb

2 Images

### Overview

<b>Product name</b>	Anti-CEND1 antibody [EPR3738]
<b>Description</b>	Rabbit monoclonal [EPR3738] to CEND1
<b>Host species</b>	Rabbit
<b>Tested applications</b>	<b>Suitable for:</b> WB, IHC-P <b>Unsuitable for:</b> Flow Cyt, ICC or IP
<b>Species reactivity</b>	<b>Reacts with:</b> Mouse, Rat, Human
<b>Immunogen</b>	Synthetic peptide within Human CEND1. The exact sequence is proprietary.
<b>Positive control</b>	Fetal brain, Neuro-2a or SH-SY5Y nuclear lysate Human brain tissue
<b>General notes</b>	

Our RabMAb<sup>®</sup> technology is a patented hybridoma-based technology for making rabbit monoclonal antibodies. For details on our patents, please refer to [RabMAb<sup>®</sup> patents](#)

**We are constantly working hard to ensure we provide our customers with best in class antibodies. As a result of this work we are pleased to now offer this antibody in purified format. We are in the process of updating our datasheets. The purified format is designated 'PUR' on our product labels. If you have any questions regarding this update, please contact our Scientific Support team.**

This product is a recombinant rabbit monoclonal antibody.

### Properties

<b>Form</b>	Liquid
<b>Storage instructions</b>	Shipped at 4°C. Store at -20°C. Stable for 12 months at -20°C.
<b>Storage buffer</b>	pH: 7.20 Preservative: 0.01% Sodium azide Constituents: 59% PBS, 40% Glycerol, 0.5% BSA
<b>Purity</b>	Protein A purified
<b>Clonality</b>	Monoclonal
<b>Clone number</b>	EPR3738

Isotype

IgG

## Applications

Our [Abpromise guarantee](#) covers the use of **ab92318** in the following tested applications.

The application notes include recommended starting dilutions; optimal dilutions/concentrations should be determined by the end user.

Application	Abreviews	Notes
WB		
IHC-P		

### Application notes

IHC-P: 1/100 - 1/250. Heat mediated antigen retrieval and use of an HRP/AP polymerized secondary antibody recommended.

WB: 1/1000 - 1/10000. Predicted molecular weight: 15 kDa.

Is unsuitable for Flow Cyt, ICC or IP.

Not yet tested in other applications.

Optimal dilutions/concentrations should be determined by the end user.

## Target

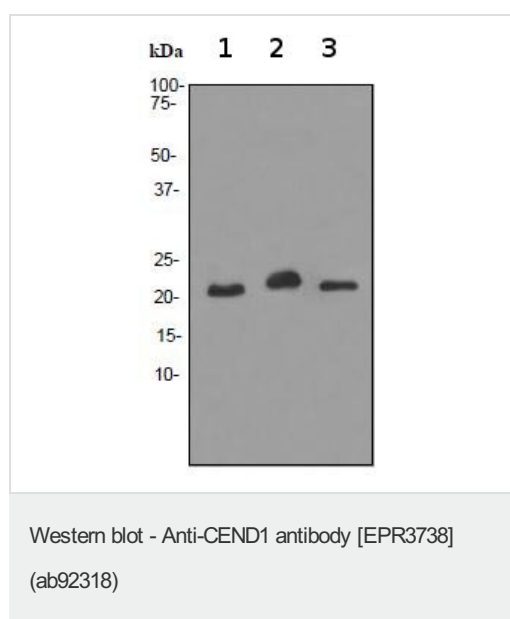
### Relevance

CEND1 is a neuron-specific protein. The similar protein in pig enhances neuroblastoma cell differentiation in vitro and may be involved in neuronal differentiation in vivo. Multiple pseudogenes have been reported for this gene.

### Cellular localization

Membrane; Single-pass type IV membrane protein.

## Images



**All lanes** : Anti-CEND1 antibody [EPR3738] (ab92318) at 1/1000 dilution

**Lane 1** : Fetal brain lysate

**Lane 2** : Neuro-2a cell lysate

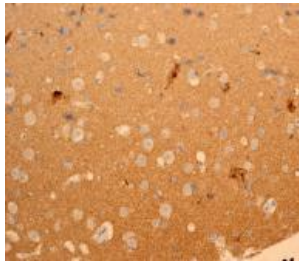
**Lane 3** : SH-SY5Y cell lysate

Lysates/proteins at 10 µg per lane.

### Secondary

**All lanes** : HRP labelled goat anti-rabbit at 1/2000 dilution

**Predicted band size:** 15 kDa



ab92318, at a 1/100 dilution, staining CEND1 in paraffin-embedded Human brain tissue.

Immunohistochemistry (Formalin/PFA-fixed paraffin-embedded sections) - Anti-CEND1 antibody [EPR3738] (ab92318)

**Please note:** All products are "FOR RESEARCH USE ONLY AND ARE NOT INTENDED FOR DIAGNOSTIC OR THERAPEUTIC USE"

### **Our Abpromise to you: Quality guaranteed and expert technical support**

---

- Replacement or refund for products not performing as stated on the datasheet
- Valid for 12 months from date of delivery
- Response to your inquiry within 24 hours
- We provide support in Chinese, English, French, German, Japanese and Spanish
- Extensive multi-media technical resources to help you
- We investigate all quality concerns to ensure our products perform to the highest standards

If the product does not perform as described on this datasheet, we will offer a refund or replacement. For full details of the Abpromise, please visit <https://www.abcam.com/abpromise> or contact our technical team.

### **Terms and conditions**

---

- Guarantee only valid for products bought direct from Abcam or one of our authorized distributors