

Product datasheet

Anti-CLEC1B antibody ab116278

1 Image

Overview

Product name	Anti-CLEC1B antibody
Description	Rabbit polyclonal to CLEC1B
Host species	Rabbit
Tested applications	Suitable for: WB
Species reactivity	Reacts with: Mouse Predicted to work with: Rat, Rabbit, Horse, Guinea pig, Cow, Cat, Dog, Saccharomyces cerevisiae
Immunogen	Synthetic peptide corresponding to a region within N-terminal amino acids 1-50 (MQDEDGYITLNIKPRKQALSSAEPASSWWRVMALVLLISSMGLVVGLVAL) of Mouse CLEC1B (NP_064369). Run BLAST with Run BLAST with
Positive control	Mouse pancreas lysate.

Properties

Form	Liquid
Storage instructions	Shipped at 4°C. Upon delivery aliquot and store at -20°C. Avoid repeated freeze / thaw cycles.
Storage buffer	Preservative: 0.09% Sodium azide Constituents: 2% Sucrose, PBS
Purity	Immunogen affinity purified
Clonality	Polyclonal
Isotype	IgG

Applications

Our [Abpromise guarantee](#) covers the use of **ab116278** in the following tested applications.

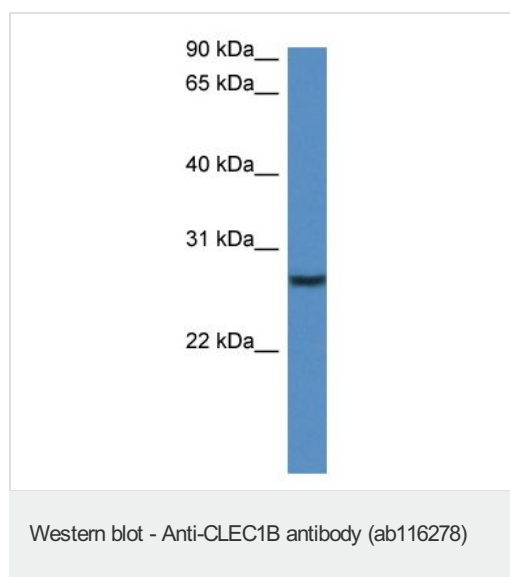
The application notes include recommended starting dilutions; optimal dilutions/concentrations should be determined by the end user.

Application	Abreviews	Notes
WB		Use a concentration of 1 µg/ml. Predicted molecular weight: 27 kDa. Good results were obtained when blocked with 5% non-fat dry milk in 0.05% PBS-T.

Target

Function	Acts as a receptor for the platelet-aggregating snake venom protein rhodocytin. Rhodocytin binding leads to tyrosine phosphorylation and this promotes the binding of spleen tyrosine kinase (Syk) and initiation of downstream tyrosine phosphorylation events and activation of PLC-gamma-2. Acts as an attachment factor for human immunodeficiency virus type 1 (HIV-1) and facilitates its capture by platelets.
Tissue specificity	Expressed preferentially in the liver. Also expressed in immune cells of myeloid origin and on the surface of platelets.
Sequence similarities	Contains 1 C-type lectin domain.
Post-translational modifications	Glycosylated. Phosphorylated on tyrosine residue in response to rhodocytin binding.
Cellular localization	Membrane.

Images



Anti-CLEC1B antibody (ab116278) at 1 µg/ml
+ Mouse pancreas lysate at 10 µg

Predicted band size: 27 kDa

Gel concentration 12%

Please note: All products are "FOR RESEARCH USE ONLY AND ARE NOT INTENDED FOR DIAGNOSTIC OR THERAPEUTIC USE"

Our Promise to you: Quality guaranteed and expert technical support

- Replacement or refund for products not performing as stated on the datasheet
- Valid for 12 months from date of delivery
- Response to your inquiry within 24 hours

- We provide support in Chinese, English, French, German, Japanese and Spanish
- Extensive multi-media technical resources to help you
- We investigate all quality concerns to ensure our products perform to the highest standards

If the product does not perform as described on this datasheet, we will offer a refund or replacement. For full details of the Abpromise, please visit <https://www.abcam.com/abpromise> or contact our technical team.

Terms and conditions

- Guarantee only valid for products bought direct from Abcam or one of our authorized distributors