


Product datasheet

Anti-CPNE3 antibody ab97919

2 Images

Overview

<b>Product name</b>	Anti-CPNE3 antibody
<b>Description</b>	Rabbit polyclonal to CPNE3
<b>Host species</b>	Rabbit
<b>Tested applications</b>	<b>Suitable for:</b> WB, IHC-P
<b>Species reactivity</b>	<b>Reacts with:</b> Human <b>Predicted to work with:</b> Mouse, Cow 
<b>Immunogen</b>	Recombinant protein fragment corresponding to a region within amino acids 234 and 533 of Human CPNE3 (AAH66597)
<b>Positive control</b>	293T, A431, H1299, HeLaS3, HepG2, MOLT4 and Raji cells. Ovarian carcinoma tissue.

Properties

<b>Form</b>	Liquid
<b>Storage instructions</b>	Shipped at 4°C. Upon delivery aliquot and store at -20°C or -80°C. Avoid repeated freeze / thaw cycles.
<b>Storage buffer</b>	Preservative: 0.01% Thimerosal (merthiolate) Constituents: 10% Glycerol, 0.1M Tris, 0.1M Glycine, pH 7
<b>Purity</b>	Immunogen affinity purified
<b>Clonality</b>	Polyclonal
<b>Isotype</b>	IgG

Applications

Our [Abpromise guarantee](#) covers the use of **ab97919** in the following tested applications.

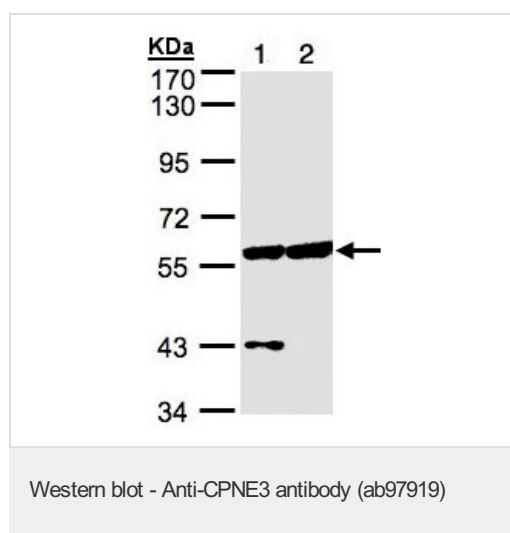
The application notes include recommended starting dilutions; optimal dilutions/concentrations should be determined by the end user.

Application	Abreviews	Notes
WB		1/500 - 1/3000. Predicted molecular weight: 60 kDa.
IHC-P		1/100.

## Target

<b>Function</b>	May function in membrane trafficking. Exhibits calcium-dependent phospholipid binding properties.
<b>Tissue specificity</b>	Ubiquitous.
<b>Sequence similarities</b>	Belongs to the copine family. Contains 2 C2 domains. Contains 1 VWFA domain.
<b>Post-translational modifications</b>	Phosphorylated on serine and threonine residues.

## Images



**All lanes :** Anti-CPNE3 antibody (ab97919)  
at 1/500 dilution

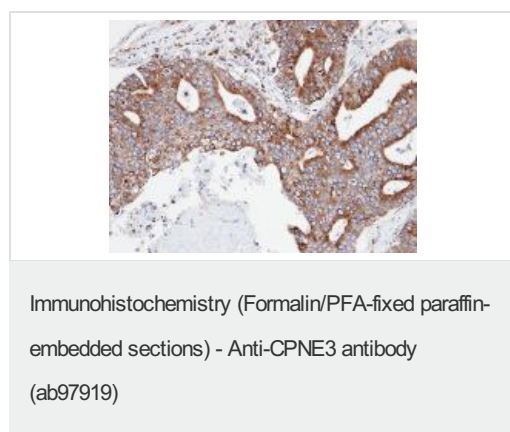
**Lane 1 :** HeLaS3 whole cell lysate

**Lane 2 :** HepG2 whole cell lysate

Lysates/proteins at 30 µg per lane.

**Predicted band size:** 60 kDa

7.5% SDS PAGE



Immunohistochemical analysis of paraffin-embedded ovarian carcinoma, using ab97919 at 1/100 dilution.

**Please note:** All products are "FOR RESEARCH USE ONLY AND ARE NOT INTENDED FOR DIAGNOSTIC OR THERAPEUTIC USE"

**Our Abpromise to you: Quality guaranteed and expert technical support**

- Replacement or refund for products not performing as stated on the datasheet
- Valid for 12 months from date of delivery
- Response to your inquiry within 24 hours
  
- We provide support in Chinese, English, French, German, Japanese and Spanish
- Extensive multi-media technical resources to help you
- We investigate all quality concerns to ensure our products perform to the highest standards

If the product does not perform as described on this datasheet, we will offer a refund or replacement. For full details of the Abpromise, please visit <https://www.abcam.com/abpromise> or contact our technical team.

### **Terms and conditions**

---

- Guarantee only valid for products bought direct from Abcam or one of our authorized distributors