

Product datasheet

Anti-CPSF2 antibody ab81553

3 Images

Overview

| | |
|----------------------------|--|
| Product name | Anti-CPSF2 antibody |
| Description | Rabbit polyclonal to CPSF2 |
| Host species | Rabbit |
| Tested applications | Suitable for: WB, IP, IHC-P |
| Species reactivity | Reacts with: Mouse, Human Predicted to work with: Rat, Rabbit, Horse, Chicken, Guinea pig, Cow, Dog, Turkey, Chimpanzee, Rhesus monkey, Gorilla, Xenopus tropicalis ▲ |
| Immunogen | Synthetic peptide corresponding to a region between residue 450 and 500 of Human CPSF2 (NP_059133.1). |
| Positive control | HeLa, 293T and NIH3T3 whole cell lysates. |

Properties

| | |
|-----------------------------|---|
| Form | Liquid |
| Storage instructions | Shipped at 4°C. Upon delivery aliquot and store at -20°C. Avoid freeze / thaw cycles. |
| Storage buffer | Preservative: 0.09% Sodium Azide Constituents: 0.1% BSA, Tris buffered saline |
| Purity | Immunogen affinity purified |
| Clonality | Polyclonal |
| Isotype | IgG |

Applications

Our [Abpromise guarantee](#) covers the use of **ab81553** in the following tested applications.

The application notes include recommended starting dilutions; optimal dilutions/concentrations should be determined by the end user.

| Application | Abreviews | Notes |
|-------------|-----------|---|
| WB | | 1/2000 - 1/10000. Predicted molecular weight: 88 kDa. |
| IP | | Use at 2-5 µg/mg of lysate. |

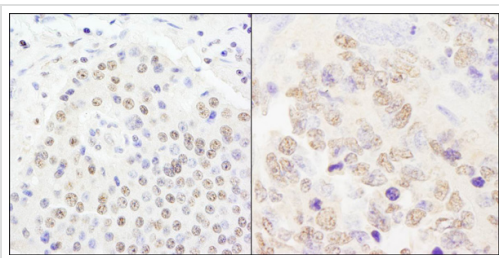
| Application | Abreviews | Notes |
|-------------|-----------|---|
| IHC-P | | 1/100 - 1/500. Perform heat mediated antigen retrieval with citrate buffer pH 6 before commencing with IHC staining protocol. |

Target

Relevance CPSF2 belongs to the RNA-metabolizing metallo-beta-lactamase-like family, CPSF2/YSH1 subfamily. It is a component of the cleavage and polyadenylation specificity factor (CPSF) complex that plays a key role in pre-mRNA 3 prime-end formation, recognizing the AAUAAA signal sequence and interacting with poly(A) polymerase and other factors to bring about cleavage and poly(A) addition. A poly(A) tail is added to eukaryotic mRNA precursors after tightly coupled cleavage and polyadenylation reactions at their 3-prime ends.

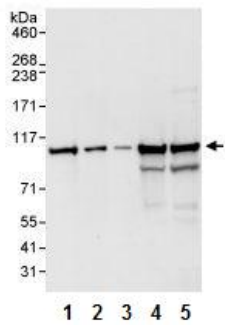
Cellular localization Nuclear

Images



Immunohistochemistry (Formalin/PFA-fixed paraffin-embedded sections) analysis of human pancreatic islet cell tumor (left) and mouse teratoma (right) tissues labelling CPSF2 with ab81553 at 1/200 (1µg/ml).
Detection: DAB.

Immunohistochemistry (Formalin/PFA-fixed paraffin-embedded sections) - Anti-CPSF2 antibody (ab81553)



Western blot - Anti-CPSF2 antibody (ab81553)

All lanes : Anti-CPSF2 antibody (ab81553) at 0.04 µg/ml

Lane 1 : HeLa whole cell lysate at 50 µg

Lane 2 : HeLa whole cell lysate at 15 µg

Lane 3 : HeLa whole cell lysate at 5 µg

Lane 4 : 293T whole cell lysate at 50 µg

Lane 5 : NIH3T3 whole cell lysate at 50 µg

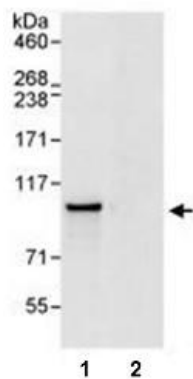
Developed using the ECL technique.

Predicted band size: 88 kDa

Observed band size: 100 kDa

Additional bands at: 80 kDa. We are unsure as to the identity of these extra bands.

Exposure time: 30 seconds



Immunoprecipitation - Anti-CPSF2 antibody (ab81553)

HeLa cell lysate (1mg) was immunoprecipitated using ab81553 at 3µg/mg (lane 1) or IgG control (lane 2). 20% of the immunoprecipitate was analysed by Western blotting using ab81553 at 1µg/ml. Bands were observed by chemiluminescence with a 3 second exposure time.

Please note: All products are "FOR RESEARCH USE ONLY AND ARE NOT INTENDED FOR DIAGNOSTIC OR THERAPEUTIC USE"

Our Abpromise to you: Quality guaranteed and expert technical support

- Replacement or refund for products not performing as stated on the datasheet
- Valid for 12 months from date of delivery
- Response to your inquiry within 24 hours
- We provide support in Chinese, English, French, German, Japanese and Spanish
- Extensive multi-media technical resources to help you
- We investigate all quality concerns to ensure our products perform to the highest standards

If the product does not perform as described on this datasheet, we will offer a refund or replacement. For full details of the Abpromise, please visit <https://www.abcam.com/abpromise> or contact our technical team.

Terms and conditions

- Guarantee only valid for products bought direct from Abcam or one of our authorized distributors