

Product datasheet

Anti-CUTL1 antibody ab73885

★★★★☆ 2 Abreviews 1 References 1 Image

Overview

Product name	Anti-CUTL1 antibody
Description	Rabbit polyclonal to CUTL1
Host species	Rabbit
Tested applications	Suitable for: WB, ELISA
Species reactivity	Reacts with: Human Predicted to work with: Mouse
Immunogen	Synthetic peptide derived from the N-terminal region of human CUTL1
Positive control	Extracts from K562 cells

Properties

Form	Liquid
Storage instructions	Shipped at 4°C. Upon delivery aliquot and store at -20°C. Avoid repeated freeze / thaw cycles.
Storage buffer	pH: 7.40 Preservative: 0.02% Sodium azide Constituents: 50% Glycerol, 0.87% Sodium chloride, PBS
Purity	Without Mg ²⁺ and Ca ²⁺ Immunogen affinity purified
Clonality	Polyclonal
Isotype	IgG

Applications

Our [Abpromise guarantee](#) covers the use of **ab73885** in the following tested applications.

The application notes include recommended starting dilutions; optimal dilutions/concentrations should be determined by the end user.

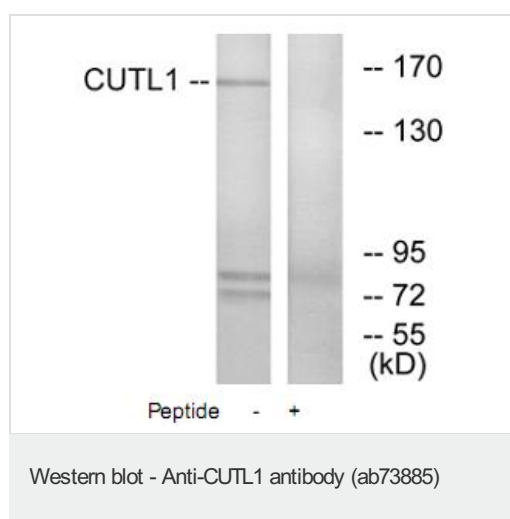
Application	Abreviews	Notes
WB	★★★★☆	1/500 - 1/1000. Predicted molecular weight: 164 kDa.

Application	Abreviews	Notes
ELISA		1/40000.

Target

Relevance	Belongs to the CASP family. May be involved in intra-Golgi retrograde transport. Homodimer; disulfide-linked. Interacts with GOLGA5.
Cellular localization	Golgi apparatus membrane; Single-pass type IV membrane protein

Images



All lanes : Anti-CUTL1 antibody (ab73885) at 1/500 dilution

Lane 1 : extracts from K562 cells

Lane 2 : extracts from K562 cells with immunizing peptide at 10 µg

Lysates/proteins at 20 µg per lane.

Predicted band size: 164 kDa

Observed band size: 164 kDa

Additional bands at: 75 kDa, 80 kDa. We are unsure as to the identity of these extra bands.

Please note: All products are "FOR RESEARCH USE ONLY AND ARE NOT INTENDED FOR DIAGNOSTIC OR THERAPEUTIC USE"

Our Abpromise to you: Quality guaranteed and expert technical support

- Replacement or refund for products not performing as stated on the datasheet
- Valid for 12 months from date of delivery
- Response to your inquiry within 24 hours
- We provide support in Chinese, English, French, German, Japanese and Spanish
- Extensive multi-media technical resources to help you
- We investigate all quality concerns to ensure our products perform to the highest standards

If the product does not perform as described on this datasheet, we will offer a refund or replacement. For full details of the Abpromise, please visit <https://www.abcam.com/abpromise> or contact our technical team.

Terms and conditions

- Guarantee only valid for products bought direct from Abcam or one of our authorized distributors