

Product datasheet

Anti-CXCR3 antibody ab71864

[3 Abreviews](#) [1 References](#) [2 Images](#)

Overview

Product name	Anti-CXCR3 antibody
Description	Rabbit polyclonal to CXCR3
Host species	Rabbit
Tested applications	Suitable for: WB, ICC/IF
Species reactivity	Reacts with: Human Predicted to work with: Mouse, Rat, Cow, Dog, Pig
Immunogen	Synthetic peptide conjugated to KLH derived from within residues 150 - 250 of Human CXCR3. Read Abcam's proprietary immunogen policy (Peptide available as ab74828 .)
Positive control	This antibody gave a positive signal in the following human tissue lysates: Colon, Small Intestine, Lymph Node and Heart IF/ICC: HeK293 cell line

Properties

Form	Liquid
Storage instructions	Shipped at 4°C. Store at +4°C short term (1-2 weeks). Upon delivery aliquot. Store at -20°C or -80°C. Avoid freeze / thaw cycle.
Storage buffer	Preservative: 0.02% Sodium Azide Constituents: 1% BSA, PBS, pH 7.4
Purity	Immunogen affinity purified
Clonality	Polyclonal
Isotype	IgG

Applications

Our [Abpromise guarantee](#) covers the use of **ab71864** in the following tested applications.

The application notes include recommended starting dilutions; optimal dilutions/concentrations should be determined by the end user.

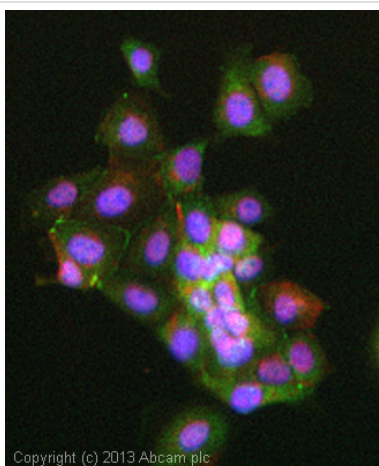
Application	Abreviews	Notes
WB		Use a concentration of 1 µg/ml. Detects a band of approximately 70 kDa (predicted molecular weight: 41 kDa).

Application	Abreviews	Notes
ICC/IF		Use a concentration of 1 µg/ml.

Target

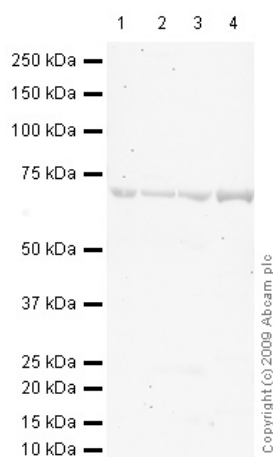
Function	<p>Receptor for CXCL9, CXCL10 and CXCL11 and mediates the proliferation of human mesangial cells (HMC).</p> <p>Isoform 2 is a receptor for CXCL4 and also mediates the inhibitory activities of CXCL9, CXCL10 and CXCL11 on the growth of human microvascular endothelial cells (HMVEC). May play a role in angiogenesis.</p> <p>Isoform 3 mediates the activity of CXCL11.</p>
Tissue specificity	Isoform 1 and isoform 2 are mainly expressed in heart, kidney, liver and skeletal muscle. Isoform 1 is also expressed in placenta.
Sequence similarities	Belongs to the G-protein coupled receptor 1 family.
Cellular localization	Cell membrane.

Images



ICC/IF image of ab71864 stained HEK293 cells. The cells were 4% formaldehyde fixed (10 min) and then incubated in 1%BSA / 10% normal goat serum / 0.3M glycine in 0.1% PBS-Tween for 1h to permeabilise the cells and block non-specific protein-protein interactions. The cells were then incubated with the antibody (ab71864, 1µg/ml) overnight at +4°C. The secondary antibody (green) was [ab96899](#), DyLight® 488 goat anti-rabbit IgG (H+L) used at a 1/250 dilution for 1h. Alexa Fluor® 594 WGA was used to label plasma membranes (red) at a 1/200 dilution for 1h. DAPI was used to stain the cell nuclei (blue) at a concentration of 1.43µM.

Immunocytochemistry/ Immunofluorescence - Anti-CXCR3 antibody (ab71864)



Western blot - Anti-CXCR3 antibody (ab71864)

All lanes : Anti-CXCR3 antibody (ab71864) at 1 µg/ml

Lane 1 : Human colon tissue lysate - total protein (ab30051)

Lane 2 : Human small intestine tissue lysate - total protein (ab29276)

Lane 3 : Human lymph node tissue lysate - total protein (ab29871)

Lane 4 : Human heart tissue lysate - total protein (ab29431)

Lysates/proteins at 10 µg per lane.

Secondary

All lanes : Goat polyclonal to Rabbit IgG - H&L - Pre-Adsorbed (HRP) at 1/3000 dilution

Performed under reducing conditions.

Predicted band size: 41 kDa

Observed band size: 70 kDa

[why is the actual band size different from the predicted?](#)

Exposure time: 20 minutes

Our observed 70kDa band is supported by the following publications: <http://www.jbc.org/content/279/29/30219.long> and <http://www.jimmunol.org/cgi/content/full/173/10/6234>

Please note: All products are "FOR RESEARCH USE ONLY AND ARE NOT INTENDED FOR DIAGNOSTIC OR THERAPEUTIC USE"

Our Abpromise to you: Quality guaranteed and expert technical support

- Replacement or refund for products not performing as stated on the datasheet
- Valid for 12 months from date of delivery
- Response to your inquiry within 24 hours

- We provide support in Chinese, English, French, German, Japanese and Spanish
- Extensive multi-media technical resources to help you
- We investigate all quality concerns to ensure our products perform to the highest standards

If the product does not perform as described on this datasheet, we will offer a refund or replacement. For full details of the Abpromise, please visit <https://www.abcam.com/abpromise> or contact our technical team.

Terms and conditions

- Guarantee only valid for products bought direct from Abcam or one of our authorized distributors