


Product datasheet

Anti-Cannabinoid Receptor I antibody ab40860

★★★★★ 2 Abreviews 1 References 1 Image

Overview

Product name	Anti-Cannabinoid Receptor I antibody
Description	Goat polyclonal to Cannabinoid Receptor I
Host species	Goat
Specificity	This antibody is expected to recognise both reported isoforms (NP_057167.2 and NP_149421.1).
Tested applications	Suitable for: WB
Species reactivity	Reacts with: Mouse, Human Predicted to work with: Rat, Dog 
Immunogen	Synthetic peptide: HTSEDGKVQVTRPDQ , corresponding to Internal sequence amino acids 320-334 of Human Cannabinoid Receptor I Run BLAST with Run BLAST with
Positive control	Rat brain lysate. Lysate prepared from transfected HEK293 cells over-expressing Cannabinoid Receptor I.

Properties

Form	Liquid
Storage instructions	Shipped at 4°C. Upon delivery aliquot and store at -20°C. Avoid freeze / thaw cycles.
Storage buffer	pH: 7.30 Preservative: 0.02% Sodium azide Constituents: Tris buffered saline, 0.5% BSA
Purity	Immunogen affinity purified
Purification notes	Purified from goat serum by ammonium sulphate precipitation followed by antigen affinity chromatography using the immunizing peptide.
Clonality	Polyclonal
Isotype	IgG

Applications

Our [Abpromise guarantee](#) covers the use of **ab40860** in the following tested applications.

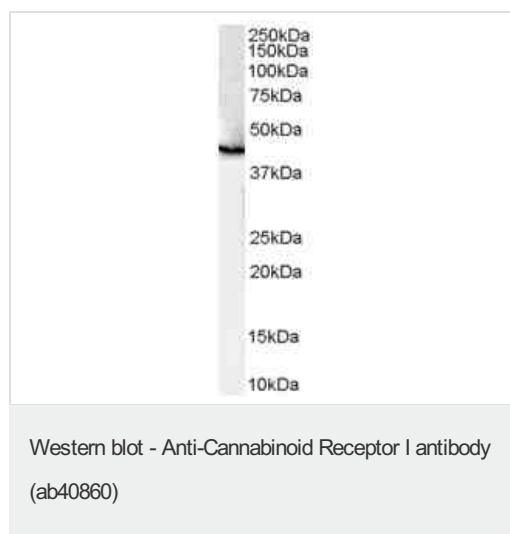
The application notes include recommended starting dilutions; optimal dilutions/concentrations should be determined by the end user.

Application	Abreviews	Notes
WB		Use a concentration of 1 - 3 µg/ml. Detects a band of approximately 65 kDa (predicted molecular weight: 53 kDa). 65kDa band detected in rat brain lysate. The observed molecular weight corresponds to earlier findings in literature with different antibodies (Porcella et al, Eur J Neurosci. 2000 Mar;12(3):1123-7. PMID: 10762343).

Target

Function	Involved in cannabinoid-induced CNS effects. Acts by inhibiting adenylate cyclase. Could be a receptor for anandamide. Inhibits L-type Ca(2+) channel current. Isoform 2 and isoform 3 have altered ligand binding.
Tissue specificity	Widely expressed.
Sequence similarities	Belongs to the G-protein coupled receptor 1 family.
Cellular localization	Cell membrane.

Images



Anti-Cannabinoid Receptor I antibody (ab40860) at 1 µg/ml + Human Brain lysate (35µg protein in RIPA buffer).

Predicted band size: 53 kDa

Observed band size: 46 kDa

[why is the actual band size different from the predicted?](#)

Primary incubation was 1 hour. Detected by chemiluminescence.

Please note: All products are "FOR RESEARCH USE ONLY AND ARE NOT INTENDED FOR DIAGNOSTIC OR THERAPEUTIC USE"

Our Abpromise to you: Quality guaranteed and expert technical support

- Replacement or refund for products not performing as stated on the datasheet
- Valid for 12 months from date of delivery
- Response to your inquiry within 24 hours
- We provide support in Chinese, English, French, German, Japanese and Spanish
- Extensive multi-media technical resources to help you
- We investigate all quality concerns to ensure our products perform to the highest standards

If the product does not perform as described on this datasheet, we will offer a refund or replacement. For full details of the Abpromise, please visit <https://www.abcam.com/abpromise> or contact our technical team.

Terms and conditions

- Guarantee only valid for products bought direct from Abcam or one of our authorized distributors