

Product datasheet

Anti-Cathepsin E antibody ab36996

★ ★ ★ ☆ ☆
[2 Abreviews](#)
[3 References](#)
[2 Images](#)

Overview

Product name	Anti-Cathepsin E antibody
Description	Rabbit polyclonal to Cathepsin E
Host species	Rabbit
Specificity	This antibody is specific for Cathepsin E.
Tested applications	Suitable for: WB, ICC/IF, IHC-P
Species reactivity	Reacts with: Mouse, Rat, Human
Immunogen	A synthetic peptide made to the C-terminus of mouse Cathepsin E.
Positive control	Murine reticulocyte lysate. Cathepsin E is expressed abundantly in the stomach, Clara cells and alveolar macrophages of the lung, brain microglia, spleen, and activated B lymphocytes. It is not expressed in resting B lymphocytes.

Properties

Form	Liquid
Storage instructions	Shipped at 4°C. Upon delivery aliquot and store at -20°C. Avoid freeze / thaw cycles.
Storage buffer	Preservative: 0.05% Sodium Azide Constituents: Whole serum
Purity	Whole antiserum
Clonality	Polyclonal
Isotype	IgG

Applications

Our [Abpromise guarantee](#) covers the use of **ab36996** in the following tested applications.

The application notes include recommended starting dilutions; optimal dilutions/concentrations should be determined by the end user.

Application	Abreviews	Notes
WB	★ ☆ ☆ ☆ ☆	1/1000. Predicted molecular weight: 42 kDa.
ICC/IF		1/200.

Application	Abreviews	Notes
IHC-P	★★★★☆	Use at an assay dependent concentration.

Target

Function May have a role in immune function. Probably involved in the processing of antigenic peptides during MHC class II-mediated antigen presentation. May play a role in activation-induced lymphocyte depletion in the thymus, and in neuronal degeneration and glial cell activation in the brain.

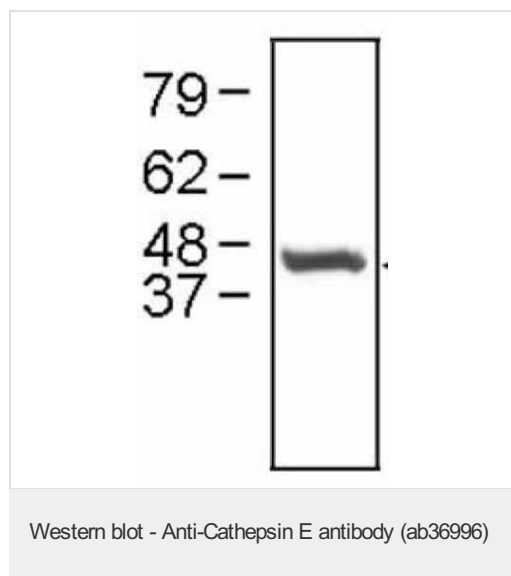
Tissue specificity Expressed abundantly in the stomach, the Clara cells of the lung and activated B-lymphocytes, and at lower levels in lymph nodes, skin and spleen. Not expressed in resting B-lymphocytes.

Sequence similarities Belongs to the peptidase A1 family.

Post-translational modifications Glycosylated. The nature of the carbohydrate chain varies between cell types. In fibroblasts, the proenzyme contains a high mannose-type oligosaccharide, while the mature enzyme contains a complex-type oligosaccharide. In erythrocyte membranes, both the proenzyme and mature enzyme contain a complex-type oligosaccharide. Two forms are produced by autocatalytic cleavage, form I begins at Ile-54, form II begins at Thr-57.

Cellular localization Endosome. The proenzyme is localized to the endoplasmic reticulum and Golgi apparatus, while the mature enzyme is localized to the endosome.

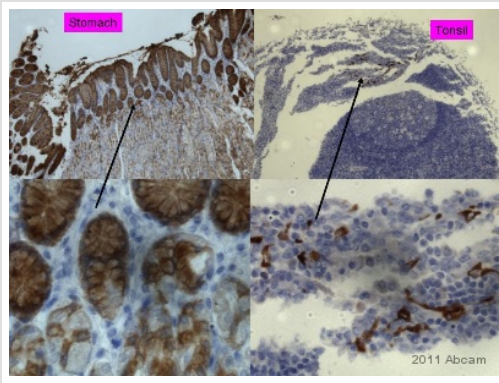
Images



Anti-Cathepsin E antibody (ab36996) at 1/1000 dilution + Murine reticulocyte lysate at 10 µg

Predicted band size: 42 kDa

Observed band size: 42 kDa



Immunohistochemistry (Formalin/PFA-fixed paraffin-embedded sections) - Anti-Cathepsin E antibody (ab36996)

This image is courtesy of an Abreview submitted by Rudolf Jung

ab36996 staining Cathepsin E at a dilution of 1/2000 in Human stomach and tonsil tissue by Immunohistochemistry (Formalin/PFA-fixed paraffin-embedded sections). The sections were PFA-fixed and subjected to Heat-mediated antigen retrieval in TRIS EDTA Buffer pH 9.0 and permeabilization with DAKO wash buffer with Tween. The primary antibody was diluted 1/2000 in DAKO blocking dilution buffer and incubated with the sample for 30 minutes at 20°C. An HRP-conjugated Goat anti-Rabbit polyclonal was used as the secondary antibody.

Please note: All products are "FOR RESEARCH USE ONLY AND ARE NOT INTENDED FOR DIAGNOSTIC OR THERAPEUTIC USE"

Our Abpromise to you: Quality guaranteed and expert technical support

- Replacement or refund for products not performing as stated on the datasheet
- Valid for 12 months from date of delivery
- Response to your inquiry within 24 hours
- We provide support in Chinese, English, French, German, Japanese and Spanish
- Extensive multi-media technical resources to help you
- We investigate all quality concerns to ensure our products perform to the highest standards

If the product does not perform as described on this datasheet, we will offer a refund or replacement. For full details of the Abpromise, please visit <https://www.abcam.com/abpromise> or contact our technical team.

Terms and conditions

- Guarantee only valid for products bought direct from Abcam or one of our authorized distributors