


Product datasheet

Anti-Centaurin alpha 2 antibody ab101675

1 References 2 Images

Overview

Product name	Anti-Centaurin alpha 2 antibody
Description	Rabbit polyclonal to Centaurin alpha 2
Host species	Rabbit
Tested applications	Suitable for: WB, IHC-P
Species reactivity	Reacts with: Human Predicted to work with: Mouse, Rat 
Immunogen	Recombinant fragment, corresponding to amino acids 48-281 of Human Centaurin alpha 2 (BC033758).
Positive control	Human fetal spleen and Human fetal kidney lysates (WB) Human fetal spleen tissue (IHC)

Properties

Form	Lyophilised:Reconstitute with 200ul distilled sterile water. Please note that if you receive this product in liquid form it has already been reconstituted as described and no further reconstitution is necessary.
Storage instructions	Shipped at 4°C. Store at -20°C. Stable for 12 months at -20°C.
Storage buffer	Preservative: 0.02% Sodium Azide Constituents: PBS, pH 7.2
Purity	Immunogen affinity purified
Clonality	Polyclonal
Isotype	IgG

Applications

Our [Abpromise guarantee](#) covers the use of **ab101675** in the following tested applications.

The application notes include recommended starting dilutions; optimal dilutions/concentrations should be determined by the end user.

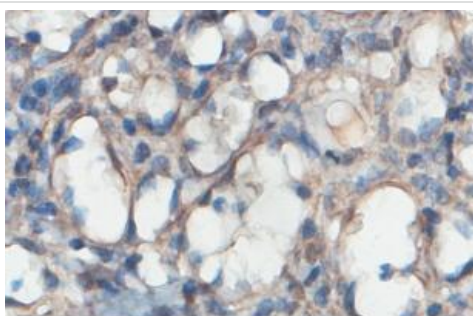
Application	Abreviews	Notes
WB		1/500 - 1/1000. Predicted molecular weight: 44 kDa.

Application	Abreviews	Notes
IHC-P		1/100 - 1/500.

Target

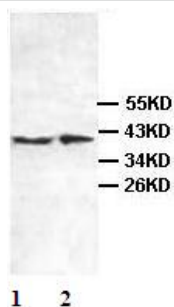
Function	GTPase-activating protein for the ADP ribosylation factor family (Potential). Binds phosphatidylinositol 3,4,5-trisphosphate (PtdInsP3) and inositol 1,3,4,5-tetrakisphosphate (InsP4). Possesses a stoichiometry of two binding sites for InsP4 with identical affinity.
Tissue specificity	Highly expressed in placenta, spleen, kidney, skeletal muscle and adrenal gland. Weakly expressed in thyroid, liver, heart, lung, small intestine, peripheral blood leukocytes. Not detected in spinal cord, brain, stomach, trachea, colon, lymph node and bone marrow.
Sequence similarities	Contains 1 Arf-GAP domain. Contains 2 PH domains.
Cellular localization	Cytoplasm. Cell membrane. Constitutively associated with the plasma membrane. Excluded from the nucleus.

Images



ab101675, at 1/100 dilution, staining membrane Centaurin alpha 2 in formalin-fixed, paraffin-embedded Human fetal spleen tissue, by Immunohistochemistry.

Immunohistochemistry (Formalin/PFA-fixed paraffin-embedded sections) - Anti-Centaurin alpha 2 antibody (ab101675)



All lanes : Anti-Centaurin alpha 2 antibody (ab101675) at 1/500 dilution

Lane 1 : Human fetal spleen lysate

Lane 2 : Human fetal kidney lysate

Predicted band size: 44 kDa

Western blot - Anti-Centaurin alpha 2 antibody (ab101675)

Our Abpromise to you: Quality guaranteed and expert technical support

- Replacement or refund for products not performing as stated on the datasheet
- Valid for 12 months from date of delivery
- Response to your inquiry within 24 hours

- We provide support in Chinese, English, French, German, Japanese and Spanish
- Extensive multi-media technical resources to help you
- We investigate all quality concerns to ensure our products perform to the highest standards

If the product does not perform as described on this datasheet, we will offer a refund or replacement. For full details of the Abpromise, please visit <https://www.abcam.com/abpromise> or contact our technical team.

Terms and conditions

- Guarantee only valid for products bought direct from Abcam or one of our authorized distributors