

## Product datasheet

# Anti-Cpn10 antibody [EPR4476] ab108600

Recombinant **RabMAb**

★★★★☆ 4 Abreviews 2 References 9 Images

### Overview

<b>Product name</b>	Anti-Cpn10 antibody [EPR4476]
<b>Description</b>	Rabbit monoclonal [EPR4476] to Cpn10
<b>Host species</b>	Rabbit
<b>Tested applications</b>	<b>Suitable for:</b> WB, IP, IHC-P, ICC/IF <b>Unsuitable for:</b> Flow Cyt
<b>Species reactivity</b>	<b>Reacts with:</b> Mouse, Rat, Human
<b>Immunogen</b>	Synthetic peptide within Human Cpn10 aa 50-150. The exact sequence is proprietary.
<b>Positive control</b>	WB: A431, Neuro-2a, A549, and MCF7 cell lysates IHC-P: Human colon and kidney tissues ICC/IF: HeLa cells
<b>General notes</b>	Our RabMAb <sup>®</sup> technology is a patented hybridoma-based technology for making rabbit monoclonal antibodies. For details on our patents, please refer to <a href="#">RabMAb<sup>®</sup> patents</a>  This product is a recombinant rabbit monoclonal antibody.

### Properties

<b>Form</b>	Liquid
<b>Storage instructions</b>	Shipped at 4°C. Store at -20°C. Stable for 12 months at -20°C.
<b>Storage buffer</b>	pH: 7.20 Preservative: 0.05% Sodium azide Constituents: 0.1% BSA, 40% Glycerol, 9.85% Tris glycine, 50% Tissue culture supernatant
<b>Purity</b>	Tissue culture supernatant
<b>Clonality</b>	Monoclonal
<b>Clone number</b>	EPR4476
<b>Isotype</b>	IgG

### Applications

Our [Abpromise guarantee](#) covers the use of **ab108600** in the following tested applications.

The application notes include recommended starting dilutions; optimal dilutions/concentrations should be determined by the end user.

Application	Abreviews	Notes
WB	★★★★★	1/10000 - 1/50000. Detects a band of approximately 11 kDa (predicted molecular weight: 11 kDa).
IP	★☆☆☆☆	1/10 - 1/100.
IHC-P		1/250 - 1/500.
ICC/IF		1/100 - 1/250.

**Application notes** Is unsuitable for Flow Cyt.

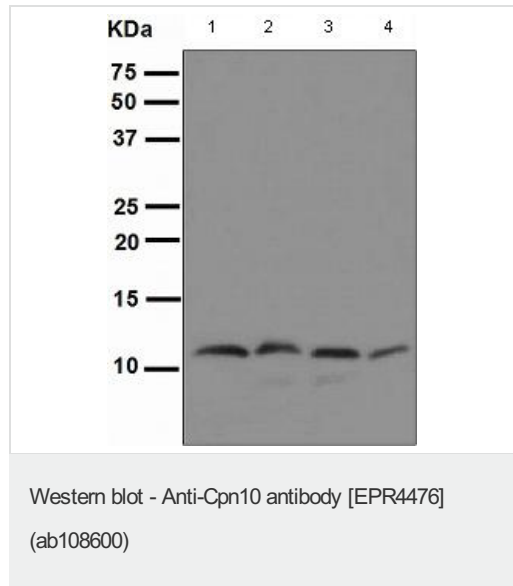
### Target

**Function** Eukaryotic CPN10 homolog which is essential for mitochondrial protein biogenesis, together with CPN60. Binds to CPN60 in the presence of Mg-ATP and suppresses the ATPase activity of the latter.

**Sequence similarities** Belongs to the GroES chaperonin family.

**Cellular localization** Mitochondrion matrix.

### Images



**All lanes :** Anti-Cpn10 antibody [EPR4476] (ab108600) at 1/10000 dilution

**Lane 1 :** A431 cell lysate

**Lane 2 :** Neuro-2a cell lysate

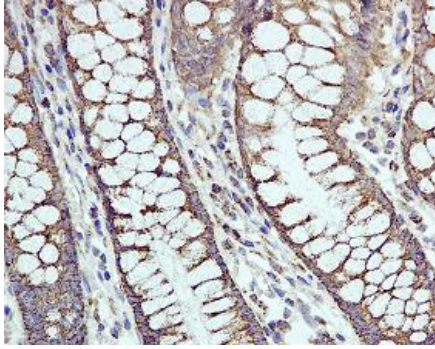
**Lane 3 :** A549 cell lysate

**Lane 4 :** MCF7 cell lysate

Lysates/proteins at 10 µg per lane.

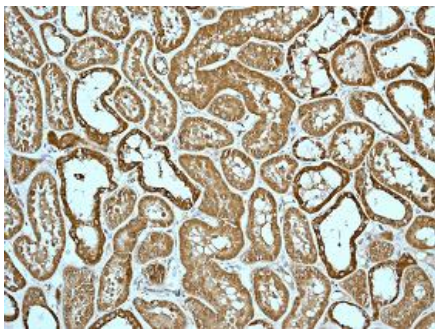
**Predicted band size:** 11 kDa

**Observed band size:** 11 kDa



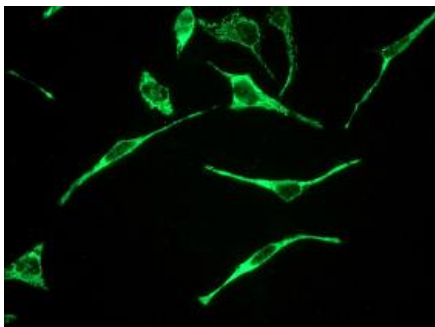
Immunohistochemical staining of Cpn10 in paraffin embedded Human colon tissue, using ab108600 at a dilution of 1/250.

Immunohistochemistry (Formalin/PFA-fixed paraffin-embedded sections) - Anti-Cpn10 antibody [EPR4476] (ab108600)



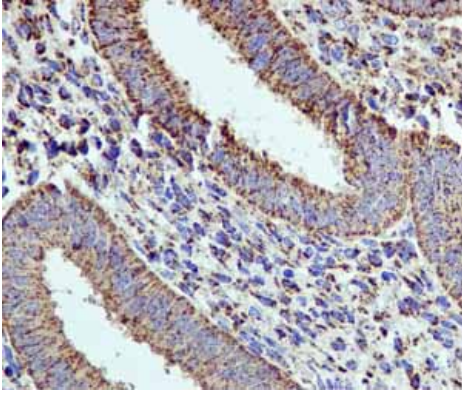
Immunohistochemical staining of Cpn10 in paraffin embedded Human kidney tissue, using ab108600 at a dilution of 1/250.

Immunohistochemistry (Formalin/PFA-fixed paraffin-embedded sections) - Anti-Cpn10 antibody [EPR4476] (ab108600)



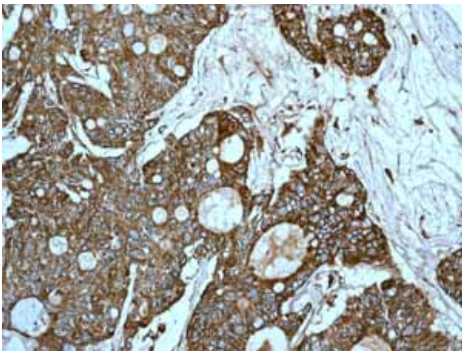
Immunofluorescent staining of Cpn10 in HeLa cells, using ab108600 at a dilution of 1/100.

Immunocytochemistry/ Immunofluorescence - Anti-Cpn10 antibody [EPR4476] (ab108600)



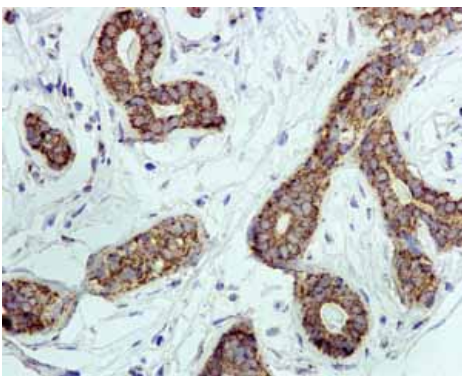
ab108600 showing positive staining in Normal uterus tissue.

Immunohistochemistry (Formalin/PFA-fixed paraffin-embedded sections) - Anti-Cpn10 antibody [EPR4476] (ab108600)



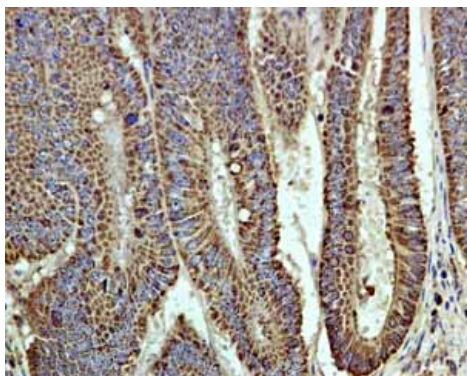
ab108600 showing positive staining in Ovarian carcinoma tissue.

Immunohistochemistry (Formalin/PFA-fixed paraffin-embedded sections) - Anti-Cpn10 antibody [EPR4476] (ab108600)



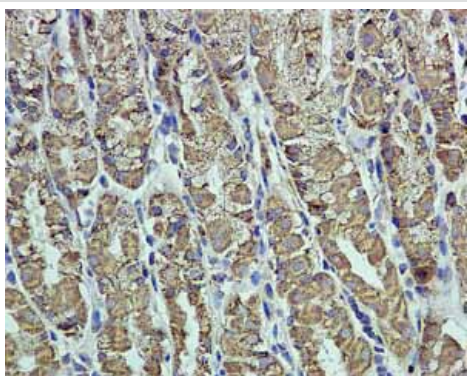
ab108600 showing positive staining in Normal breast tissue.

Immunohistochemistry (Formalin/PFA-fixed paraffin-embedded sections) - Anti-Cpn10 antibody [EPR4476] (ab108600)



ab108600 showing positive staining in Colonic adenocarcinoma tissue.

Immunohistochemistry (Formalin/PFA-fixed paraffin-embedded sections) - Anti-Cpn10 antibody [EPR4476] (ab108600)



ab108600 showing positive staining in Normal stomach tissue.

Immunohistochemistry (Formalin/PFA-fixed paraffin-embedded sections) - Anti-Cpn10 antibody [EPR4476] (ab108600)

**Please note:** All products are "FOR RESEARCH USE ONLY AND ARE NOT INTENDED FOR DIAGNOSTIC OR THERAPEUTIC USE"

### Our Abpromise to you: Quality guaranteed and expert technical support

- Replacement or refund for products not performing as stated on the datasheet
- Valid for 12 months from date of delivery
- Response to your inquiry within 24 hours
- We provide support in Chinese, English, French, German, Japanese and Spanish
- Extensive multi-media technical resources to help you
- We investigate all quality concerns to ensure our products perform to the highest standards

If the product does not perform as described on this datasheet, we will offer a refund or replacement. For full details of the Abpromise, please visit <https://www.abcam.com/abpromise> or contact our technical team.

### Terms and conditions

- Guarantee only valid for products bought direct from Abcam or one of our authorized distributors