

Product datasheet

Anti-Cyclin A2 antibody ab2097

2 References 1 Image

Overview

Product name	Anti-Cyclin A2 antibody
Description	Rabbit polyclonal to Cyclin A2
Host species	Rabbit
Specificity	Antiserum will specifically react with a 60 kDa Cyclin A2 protein from human, rat and mouse tissue. No reaction was observed against other related cyclins. Cross reactivity with Cyclin A from other species may also occur.
Tested applications	Suitable for: WB, IP, ELISA, ICC/IF
Species reactivity	Reacts with: Mouse, Rat, Rabbit, Human
Immunogen	Synthetic peptide corresponding to Human Cyclin A2. Database link: P20248

Properties

Form	Liquid
Storage instructions	Shipped at 4°C. Upon delivery aliquot and store at -20°C or -80°C. Avoid repeated freeze / thaw cycles.
Storage buffer	Preservative: 0.01% Sodium Azide
Purity	Whole antiserum
Purification notes	This product was prepared from monospecific antiserum by delipidation and defibrination.
Clonality	Polyclonal
Isotype	IgG

Applications

Our [Abpromise guarantee](#) covers the use of **ab2097** in the following tested applications.

The application notes include recommended starting dilutions; optimal dilutions/concentrations should be determined by the end user.

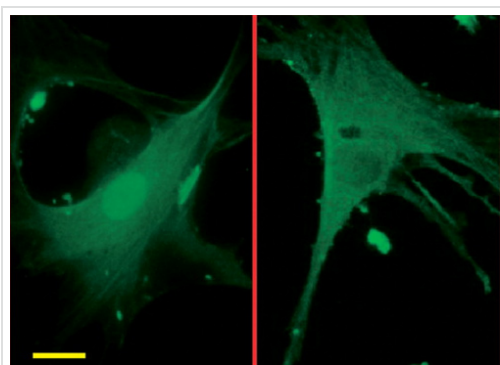
Application	Abreviews	Notes
WB		1/500 - 1/5000. Predicted molecular weight: 49 kDa.

Application	Abreviews	Notes
IP		1/100.
ELISA		1/5000 - 1/20000.
ICC/IF		1/50. PubMed: 18083977

Target

Function	Essential for the control of the cell cycle at the G1/S (start) and the G2/M (mitosis) transitions.
Sequence similarities	Belongs to the cyclin family. Cyclin AB subfamily.
Developmental stage	Accumulates steadily during G2 and is abruptly destroyed at mitosis.
Cellular localization	Nucleus. Cytoplasm. Cytoplasmic when associated with SCAPER.

Images



Immunocytochemistry/ Immunofluorescence - Anti-Cyclin A2 antibody (ab2097)

Image from Faustino RS et al., J Lipid Res. 2008 Mar;49(3):654-62. Epub 2007 Dec 14. Fig 6.; doi: 10.1194/jlr.M700464-JLR200; March 2008, The Journal of Lipid Research, 49, 654-662.

ab2097, staining Cyclin A in rabbit vascular smooth muscle cells, by Immunocytochemistry/Immunofluorescence.

Cells were either untreated (left) or treated with 10 μ M ceramide (right), fixed with paraformaldehyde, permeabilized with 0.1% Triton X-100 and incubated in blocking buffer (PBS, 2% skim milk, and 0.1% Tween-20) for 30 min at room temperature. Samples were incubated with primary antibody at 1/50 dilution for 1 hour at room temperature. An AlexaFluor®-conjugated goat anti-mouse IgG (1/1000) was used as the secondary antibody.

Please note: All products are "FOR RESEARCH USE ONLY AND ARE NOT INTENDED FOR DIAGNOSTIC OR THERAPEUTIC USE"

Our Abpromise to you: Quality guaranteed and expert technical support

- Replacement or refund for products not performing as stated on the datasheet
- Valid for 12 months from date of delivery
- Response to your inquiry within 24 hours
- We provide support in Chinese, English, French, German, Japanese and Spanish
- Extensive multi-media technical resources to help you
- We investigate all quality concerns to ensure our products perform to the highest standards

If the product does not perform as described on this datasheet, we will offer a refund or replacement. For full details of the Abpromise, please visit <https://www.abcam.com/abpromise> or contact our technical team.

Terms and conditions

- Guarantee only valid for products bought direct from Abcam or one of our authorized distributors