


Product datasheet

Anti-Cyclophilin A antibody ab3563

★★★★★ 4 Abreviews 6 References 3 Images

Overview

Product name	Anti-Cyclophilin A antibody
Description	Rabbit polyclonal to Cyclophilin A
Host species	Rabbit
Specificity	Detects recombinant human Cyclophilin A (CyPA), but does not detect endogenous levels of CyPA.
Tested applications	Suitable for: ICC/IF, WB, ELISA, ICC
Species reactivity	Reacts with: Mouse, Rat, Rabbit, Hamster, Human Predicted to work with: Cow, Cat, Pig, Chimpanzee, Rhesus monkey, African green monkey 
Immunogen	Other Immunogen Type corresponding to Human Cyclophilin A. Purified recombinant Human Cyclophilin A.

Properties

Form	Liquid
Storage instructions	Shipped at 4°C. Store at +4°C short term (1-2 weeks). Upon delivery aliquot. Store at -20°C or -80°C. Avoid freeze / thaw cycle.
Storage buffer	Preservative: 0.05% Sodium azide Constituent: 99% PBS
Purity	IgG fraction
Clonality	Polyclonal
Isotype	IgG

Applications

Our [Abpromise guarantee](#) covers the use of **ab3563** in the following tested applications.

The application notes include recommended starting dilutions; optimal dilutions/concentrations should be determined by the end user.

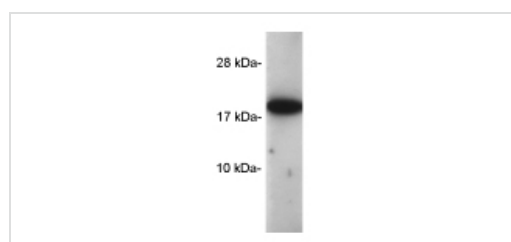
Application	Abreviews	Notes
ICC/IF		Use a concentration of 1 µg/ml.

Application	Abreviews	Notes
WB	★★★★★	1/300.
ELISA	★★★★★	1/1000. Used for 2 hrs on Rabbit liver cells.
ICC		Use at an assay dependent concentration.

Target

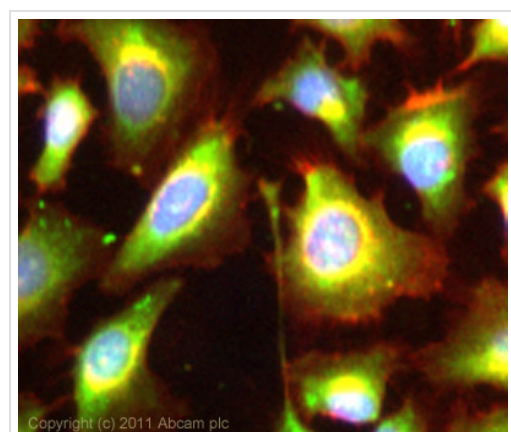
Function	PPases accelerate the folding of proteins. It catalyzes the cis-trans isomerization of proline imidic peptide bonds in oligopeptides.
Sequence similarities	Belongs to the cyclophilin-type PPase family. PPase A subfamily. Contains 1 PPase cyclophilin-type domain.
Cellular localization	Cytoplasm.

Images



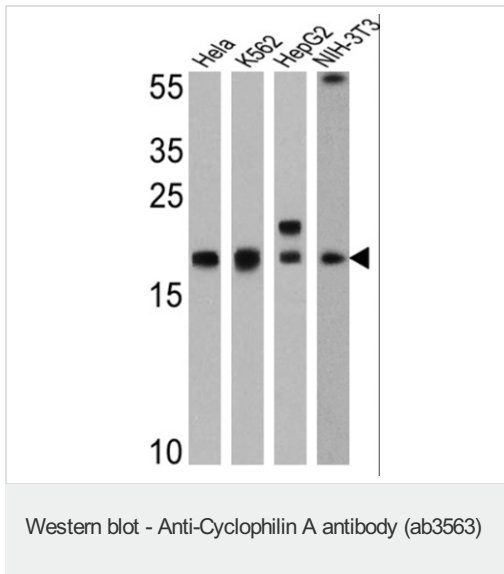
Western blot - Anti-Cyclophilin A antibody (ab3563)

ab3563 at 1/300 dilution detecting 0.5ug recombinant human cyclophilin A by Western Blot (ECL).



Immunocytochemistry/ Immunofluorescence - Anti-Cyclophilin A antibody (ab3563)

ICC/IF image of ab3563 stained HeLa cells. The cells were 100% methanol fixed (5 min) and then incubated in 1%BSA / 10% normal goat serum / 0.3M glycine in 0.1% PBS-Tween for 1h to permeabilise the cells and block non-specific protein-protein interactions. The cells were then incubated with the antibody (ab3563, 1µg/ml) overnight at +4°C. The secondary antibody (green) was Alexa Fluor® 488 goat anti-rabbit IgG (H+L) used at a 1/1000 dilution for 1h. Alexa Fluor® 594 WGA was used to label plasma membranes (red) at a 1/200 dilution for 1h. DAPI was used to stain the cell nuclei (blue) at a concentration of 1.43µM.



All lanes : Anti-Cyclophilin A antibody (ab3563) at 1/500 dilution

Lane 1 : HeLa cell lysate

Lane 2 : K562 cell lysate

Lane 3 : HepG2 cell lysate

Lane 4 : NIH-3T3

Lysates/proteins at 25 µg per lane.

Observed band size: 18 kDa

[why is the actual band size different from the predicted?](#)

Please note: All products are "FOR RESEARCH USE ONLY AND ARE NOT INTENDED FOR DIAGNOSTIC OR THERAPEUTIC USE"

Our Abpromise to you: Quality guaranteed and expert technical support

- Replacement or refund for products not performing as stated on the datasheet
- Valid for 12 months from date of delivery
- Response to your inquiry within 24 hours
- We provide support in Chinese, English, French, German, Japanese and Spanish
- Extensive multi-media technical resources to help you
- We investigate all quality concerns to ensure our products perform to the highest standards

If the product does not perform as described on this datasheet, we will offer a refund or replacement. For full details of the Abpromise, please visit <https://www.abcam.com/abpromise> or contact our technical team.

Terms and conditions

- Guarantee only valid for products bought direct from Abcam or one of our authorized distributors