

Product datasheet

Anti-Cytokeratin 2e antibody [Ks2.342.7.1] ab19122

1 Image

Overview

<b>Product name</b>	Anti-Cytokeratin 2e antibody [Ks2.342.7.1]
<b>Description</b>	Mouse monoclonal [Ks2.342.7.1] to Cytokeratin 2e
<b>Host species</b>	Mouse
<b>Specificity</b>	This antibody is reactive with epidermal cells in uppermost suprabasal layers including scalp, foot and sole. It recognizes individual cells within epidermis of tongue and mamille (co-localization with cytokeratin 10). It is also reactive on hyperkeratosis of diverse viral and genetic origin. The antibody does not react with palate cytokeratin 2p.
<b>Tested applications</b>	<b>Suitable for:</b> WB, IHC-P, IHC-Fr
<b>Species reactivity</b>	<b>Reacts with:</b> Mouse, Rat, Cow, Human
<b>Immunogen</b>	Synthetic peptide: SCQISCKSRG RGGGGGGFRG FS , corresponding to N terminal amino acids 2 - 23 of Human Keratin 2e. <a href="#">Run BLAST with</a> <a href="#">Run BLAST with</a>
<b>Positive control</b>	IHC-P: FFPE human skin tissue sections.
<b>General notes</b>	This antibody represents an excellent marker to study terminal epidermal differentiation.

Properties

<b>Form</b>	Liquid
<b>Storage instructions</b>	Shipped at 4°C. Store at +4°C short term (1-2 weeks). Upon delivery aliquot. Store at -20°C long term. Avoid freeze / thaw cycle.
<b>Storage buffer</b>	Constituent: Tissue culture supernatant
<b>Purity</b>	Tissue culture supernatant
<b>Primary antibody notes</b>	This antibody represents an excellent marker to study terminal epidermal differentiation.
<b>Clonality</b>	Monoclonal
<b>Clone number</b>	Ks2.342.7.1
<b>Isotype</b>	IgG1

## Applications

---

Our [Abpromise guarantee](#) covers the use of **ab19122** in the following tested applications.

The application notes include recommended starting dilutions; optimal dilutions/concentrations should be determined by the end user.

Application	Abreviews	Notes
WB		Use at an assay dependent concentration. Predicted molecular weight: 66 kDa.
IHC-P		Use at an assay dependent concentration.
IHC-Fr		1/20.

## Target

---

### Relevance

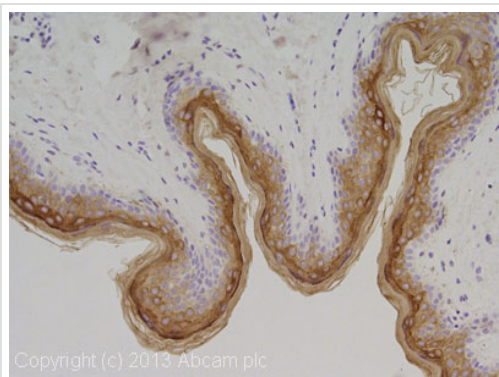
Keratins are the major gene product of keratinocytes and form the intermediate filament cytoskeletal network in these cells. In cells of the upper spinous layer, KRT2E and KRT9 are expressed. Although the expression of KRT9 is limited to palmoplantar epidermis, KRT2E is expressed not only in this tissue but also in other regions, notably the epidermis covering the knee, thigh, and groin. It is not known whether these keratins simply replace their respective type I or type II counterpart in the preexisting KRT1/KRT10 network or dimerize with another, as yet undiscovered keratin partner

### Cellular localization

Cytoplasmic

## Images

---



Immunohistochemistry (Formalin/PFA-fixed paraffin-embedded sections) - Anti-Cytokeratin 2e antibody [Ks2.342.7.1] (ab19122)

IHC image of Cytokeratin 2e staining in human skin formalin fixed paraffin embedded tissue section, performed on a Leica Bond system using the standard protocol F. The section was pre-treated using heat mediated antigen retrieval with sodium citrate buffer (pH6, epitope retrieval solution 1) for 20 mins. The section was then incubated with ab19122, 1/100 dilution, for 15 mins at room temperature and detected using an HRP conjugated compact polymer system. DAB was used as the chromogen. The section was then counterstained with haematoxylin and mounted with DPX.

For other IHC staining systems (automated and non-automated) customers should optimize variable parameters such as antigen retrieval conditions, primary antibody concentration and antibody incubation times.

**Please note:** All products are "FOR RESEARCH USE ONLY AND ARE NOT INTENDED FOR DIAGNOSTIC OR THERAPEUTIC USE"

### Our Abpromise to you: Quality guaranteed and expert technical support

- Replacement or refund for products not performing as stated on the datasheet
- Valid for 12 months from date of delivery
- Response to your inquiry within 24 hours
- We provide support in Chinese, English, French, German, Japanese and Spanish
- Extensive multi-media technical resources to help you
- We investigate all quality concerns to ensure our products perform to the highest standards

If the product does not perform as described on this datasheet, we will offer a refund or replacement. For full details of the Abpromise, please visit <https://www.abcam.com/abpromise> or contact our technical team.

### Terms and conditions

- Guarantee only valid for products bought direct from Abcam or one of our authorized distributors