

## Product datasheet

# D-Lactate Assay Kit (Colorimetric) ab83429

1 References 5 Images

### Overview

<b>Product name</b>	D-Lactate Assay Kit (Colorimetric)
<b>Sample type</b>	Cell culture supernatant, Urine, Serum, Plasma, Other biological fluids, Tissue Extracts
<b>Assay type</b>	Quantitative
<b>Sensitivity</b>	> 0.01 mM
<b>Range</b>	0.01 mM - 10 mM
<b>Assay time</b>	0h 40m
<b>Product overview</b>	<p>Abcam's D-Lactate Assay Kit (Colorimetric) Kit provides a fast, easy way to accurately measure D-lactate in a variety of biological samples. In this kit, D-lactate is specifically oxidized by D-lactate dehydrogenase and generates proportional color (<math>\lambda_{max} = 450 \text{ nm}</math>). The kit detects D-Lactate in samples such as serum, plasma, cells, culture and fermentation media.</p> <p>Visit our <a href="#">FAQs page</a> for tips and troubleshooting.</p>

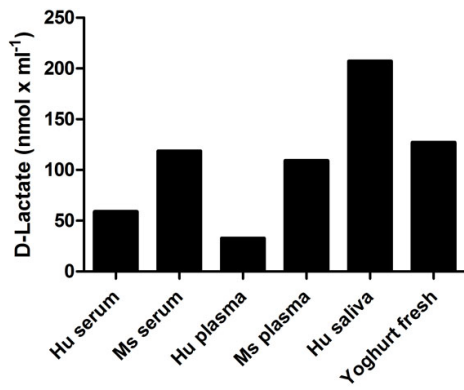
### Properties

**Storage instructions** Store at -20°C. Please refer to protocols.

Components	Identifier	100 tests
D-Lactate Assay Buffer	WM	1 x 25ml
D-Lactate Enzyme Mix (Lyophilised)	Green	1 x 1ng
D-Lactate Substrate Mix (Lyophilised)	Red	1 vial
D-Lactate Standard (100 mM)	Yellow	1 x 100µl

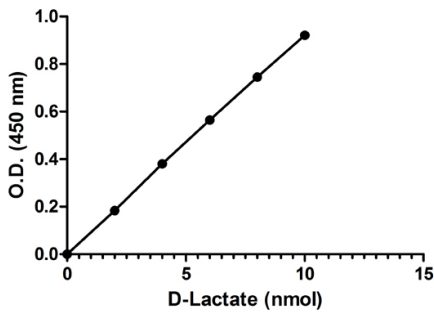
**Relevance** D-Lactate production in mammals, mainly due to the glyoxalase pathway, is extremely low, with normal serum concentrations in the nano to micromolar range. Typically, elevated D-lactate levels which can rise to millimolar levels, are due to bacterial infection or short bowel syndrome in humans. Abnormally high concentrations of D-lactate are considered indicative of sepsis, ischemia or trauma. Due to slow metabolism and excretion, high D-lactate can cause acidosis and encephalopathy.

### Images



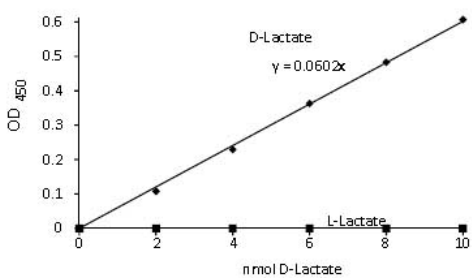
D-Lactate measured in human serum, plasma and saliva, mouse serum and plasma and fresh yoghurt showing quantity (nmol) per ml of tested sample. Samples were diluted 3-27 fold.

Functional Studies - D-Lactate Assay Kit  
(Colorimetric) (ab83429)



Colorimetric standard curve: mean of duplicates (+/- SD) with background reads subtracted.

Functional Studies - D-Lactate Assay Kit  
(Colorimetric) (ab83429)

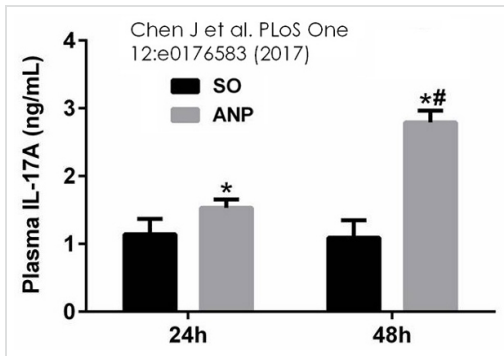


D-Lactate Standard Curve. The assay is performed according to the kit instruction. The assay specifically detects D-Lactate in the presence of up to 1000X L-Lactate.

Functional Studies - D-Lactate Colorimetric Assay  
Kit (ab83429)

Standard curve: mean of duplicates (+/- SD) with background reads subtracted.

Functional Studies - D-Lactate Assay Kit  
(Colorimetric) (ab83429)



Functional Studies - D-Lactate Assay Kit

(Colorimetric) (ab83429)

Image from Chen J et al., PLoS One.  
2017;12(4):e0176583. Fig 2(A).; doi:  
10.1371/journal.pone.0176583.

Measurement of plasma D-lactate at 24h and 48h after ANP induction using ab83429.

To evaluate the severity of intestinal barrier dysfunction, plasma DAO and D-lactate were measured as indicators of intestinal mucosal mass and integrity which can reflect the extent of permeability and damage in the intestine.

Compared with the SO groups D-lactate significantly increased in the ANP groups at 24h and 48h (all  $p < 0.05$ ). The ANP48h group had significantly higher levels of plasma D-lactate than those of the ANP24h group ( $p < 0.05$ , respectively).

**Please note:** All products are "FOR RESEARCH USE ONLY AND ARE NOT INTENDED FOR DIAGNOSTIC OR THERAPEUTIC USE"

### Our Abpromise to you: Quality guaranteed and expert technical support

- Replacement or refund for products not performing as stated on the datasheet
- Valid for 12 months from date of delivery
- Response to your inquiry within 24 hours
- We provide support in Chinese, English, French, German, Japanese and Spanish
- Extensive multi-media technical resources to help you
- We investigate all quality concerns to ensure our products perform to the highest standards

If the product does not perform as described on this datasheet, we will offer a refund or replacement. For full details of the Abpromise, please visit <https://www.abcam.com/abpromise> or contact our technical team.

### Terms and conditions

- Guarantee only valid for products bought direct from Abcam or one of our authorized distributors