

Product datasheet

Anti-DAP Kinase 2 antibody [EPR1634(2)] ab111928

Recombinant RabMAb

1 Image

Overview

<b>Product name</b>	Anti-DAP Kinase 2 antibody [EPR1634(2)]
<b>Description</b>	Rabbit monoclonal [EPR1634(2)] to DAP Kinase 2
<b>Host species</b>	Rabbit
<b>Tested applications</b>	<b>Suitable for:</b> WB <b>Unsuitable for:</b> Flow Cyt, ICC, IHC-P or IP
<b>Species reactivity</b>	<b>Reacts with:</b> Human
<b>Immunogen</b>	Synthetic peptide within Human DAP Kinase 2 aa 300-400 (C terminal). The exact sequence is proprietary.
<b>Positive control</b>	Human fetal brain, HepG2 and A431 cell lysates.
<b>General notes</b>	Mouse, Rat: We have preliminary internal testing data to indicate this antibody may not react with these species. Please contact us for more information.

Our RabMAb<sup>®</sup> technology is a patented hybridoma-based technology for making rabbit monoclonal antibodies. For details on our patents, please refer to [RabMab<sup>®</sup> patents](#)

This product is a recombinant rabbit monoclonal antibody.

Properties

<b>Form</b>	Liquid
<b>Storage instructions</b>	Shipped at 4°C. Store at -20°C. Stable for 12 months at -20°C.
<b>Storage buffer</b>	pH: 7.20 Preservative: 0.05% Sodium azide Constituents: 0.1% BSA, 40% Glycerol, 9.85% Tris glycine, 50% Tissue culture supernatant
<b>Purity</b>	Tissue culture supernatant
<b>Clonality</b>	Monoclonal
<b>Clone number</b>	EPR1634(2)
<b>Isotype</b>	IgG

## Applications

Our [Abpromise guarantee](#) covers the use of **ab111928** in the following tested applications.

The application notes include recommended starting dilutions; optimal dilutions/concentrations should be determined by the end user.

Application	Abreviews	Notes
-------------	-----------	-------

WB 1/1000 - 1/10000. Predicted molecular weight: 43 kDa.

**Application notes** Is unsuitable for Flow Cyt, ICC, IHC-P or IP.

## Target

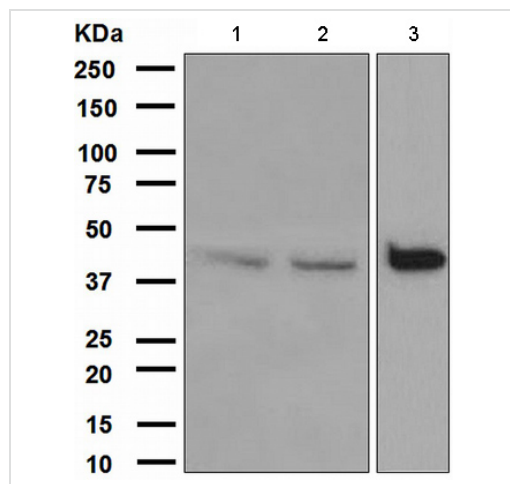
**Function** Calcium/calmodulin-dependent serine/threonine kinase which acts as a positive regulator of apoptosis.

**Tissue specificity** Ubiquitously expressed in all tissue types examined. High levels in heart, lung and skeletal muscle.

**Sequence similarities** Belongs to the protein kinase superfamily. CAMK Ser/Thr protein kinase family. DAP kinase subfamily.  
Contains 1 protein kinase domain.

**Cellular localization** Cytoplasm.

## Images



**All lanes** : Anti-DAP Kinase 2 antibody  
[EPR1634(2)] (ab111928) at 1/1000 dilution

**Lane 1** : Human fetal brain lysate

**Lane 2** : HepG2 cell lysate

**Lane 3** : A431 cell lysate

Lysates/proteins at 10 µg per lane.

**Predicted band size:** 43 kDa

Western blot - Anti-DAP Kinase 2 antibody  
[EPR1634(2)] (ab111928)

**Please note:** All products are "FOR RESEARCH USE ONLY AND ARE NOT INTENDED FOR DIAGNOSTIC OR THERAPEUTIC USE"

## Our Abpromise to you: Quality guaranteed and expert technical support

- Replacement or refund for products not performing as stated on the datasheet
- Valid for 12 months from date of delivery

- Response to your inquiry within 24 hours
- We provide support in Chinese, English, French, German, Japanese and Spanish
- Extensive multi-media technical resources to help you
- We investigate all quality concerns to ensure our products perform to the highest standards

If the product does not perform as described on this datasheet, we will offer a refund or replacement. For full details of the Abpromise, please visit <https://www.abcam.com/abpromise> or contact our technical team.

### **Terms and conditions**

---

- Guarantee only valid for products bought direct from Abcam or one of our authorized distributors