


## Product datasheet

# Anti-DDA1 antibody ab117440

[3 Images](#)

### Overview

<b>Product name</b>	Anti-DDA1 antibody
<b>Description</b>	Rabbit polyclonal to DDA1
<b>Host species</b>	Rabbit
<b>Tested applications</b>	<b>Suitable for:</b> ICC/IF, ICC, WB, IHC-P
<b>Species reactivity</b>	<b>Reacts with:</b> Mouse, Rat <b>Predicted to work with:</b> Human 
<b>Immunogen</b>	18 amino acid synthetic peptide derived from near the C terminal of Human DDA1.
<b>Positive control</b>	Mouse heart tissue lysate.

### Properties

<b>Form</b>	Liquid
<b>Storage instructions</b>	Shipped at 4°C. Upon delivery aliquot and store at -20°C. Avoid freeze / thaw cycles.
<b>Storage buffer</b>	Preservative: 0.02% Sodium azide Constituent: 99% PBS
<b>Purity</b>	Immunogen affinity purified
<b>Clonality</b>	Polyclonal
<b>Isotype</b>	IgG

### Applications

Our [Abpromise guarantee](#) covers the use of **ab117440** in the following tested applications.

The application notes include recommended starting dilutions; optimal dilutions/concentrations should be determined by the end user.

Application	Abreviews	Notes
ICC/IF		Use a concentration of 20 µg/ml.
ICC		Use a concentration of 5 µg/ml.
WB		Use a concentration of 0.5 - 1 µg/ml. Predicted molecular weight: 11 kDa.

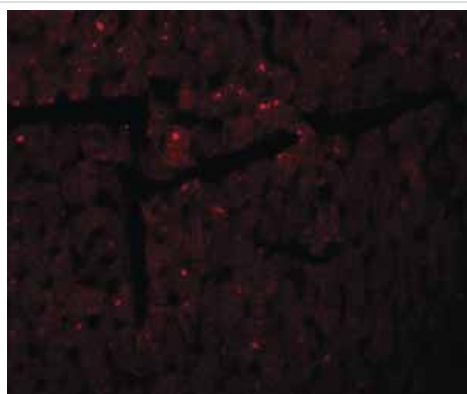
Application	Abreviews	Notes
IHC-P		Use at an assay dependent concentration.

## Target

**Function** May be involved in ubiquitination and subsequent proteasomal degradation of target proteins. Component of the DDD-E2 complexes which may provide a platform for interaction with CUL4A and WD repeat proteins.

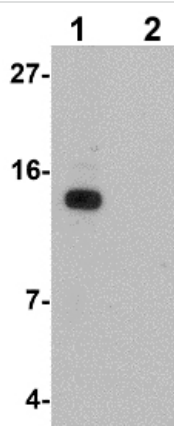
**Sequence similarities** Belongs to the DDA1 family.

## Images



Immunofluorescence of DDA1 in mouse heart tissue with ab117440 at 20 ug/mL.

Immunocytochemistry/ Immunofluorescence - Anti-DDA1 antibody (ab117440)



**All lanes** : Anti-DDA1 antibody (ab117440) at 1 µg/ml

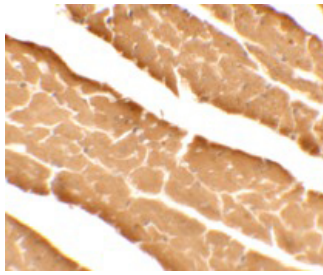
**Lane 1** : Mouse heart tissue lysate

**Lane 2** : Mouse heart tissue lysate with blocking peptide

Lysates/proteins at 15 µg per lane.

**Predicted band size:** 11 kDa

Western blot - Anti-DDA1 antibody (ab117440)



Immunohistochemical analysis of mouse heart tissue, staining DDA1 with ab117440 at 5 µg/ml.

Immunocytochemistry - Anti-DDA1 antibody  
(ab117440)

**Please note:** All products are "FOR RESEARCH USE ONLY AND ARE NOT INTENDED FOR DIAGNOSTIC OR THERAPEUTIC USE"

### Our Abpromise to you: Quality guaranteed and expert technical support

---

- Replacement or refund for products not performing as stated on the datasheet
- Valid for 12 months from date of delivery
- Response to your inquiry within 24 hours
- We provide support in Chinese, English, French, German, Japanese and Spanish
- Extensive multi-media technical resources to help you
- We investigate all quality concerns to ensure our products perform to the highest standards

If the product does not perform as described on this datasheet, we will offer a refund or replacement. For full details of the Abpromise, please visit <https://www.abcam.com/abpromise> or contact our technical team.

### Terms and conditions

---

- Guarantee only valid for products bought direct from Abcam or one of our authorized distributors