

Product datasheet

Anti-DKKL1 antibody ab38588

1 References 2 Images

Overview

---

|                            |  |
|----------------------------|--|
| <b>Product name</b>        | Anti-DKKL1 antibody  |
| <b>Description</b>         | Rabbit polyclonal to DKKL1   |
| <b>Host species</b>        | Rabbit   |
| <b>Specificity</b>         | Targets C terminus of DKKL1.   |
| <b>Tested applications</b> | <b>Suitable for:</b> ELISA, WB, IHC-P  |
| <b>Species reactivity</b>  | <b>Reacts with:</b> Mouse, Human   |
| <b>Immunogen</b>           | Synthetic peptide (10-30 aa in length) conjugated to KLH, from the last 50 C terminal amino acids of DKKL1 (Human) |
| <b>Positive control</b>    | Mouse testis tissue lysate; Human breast carcinoma   |

Properties

---

|                             |   |
|-----------------------------|---|
| <b>Form</b>                 | Liquid  |
| <b>Storage instructions</b> | Shipped at 4°C. Store at +4°C short term (1-2 weeks). Upon delivery aliquot. Store at -20°C or -80°C. Avoid freeze / thaw cycle.                |
| <b>Storage buffer</b>       | Preservative: 0.09% Sodium Azide<br>Constituents: PBS   |
| <b>Purity</b>               | Protein G purified  |
| <b>Purification notes</b>   | This antibody was eluted out with both high and low pH buffers and neutralized immediately after elution then followed by dialysis against PBS. |
| <b>Clonality</b>            | Polyclonal  |
| <b>Isotype</b>              | IgG   |

Applications

---

Our [Abpromise guarantee](#) covers the use of **ab38588** in the following tested applications.

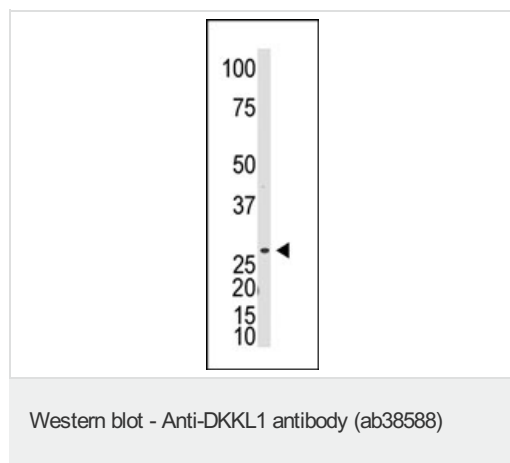
The application notes include recommended starting dilutions; optimal dilutions/concentrations should be determined by the end user.

| Application | Abreviews | Notes   |
|-------------|-----------|---|
| ELISA       |           | 1/1000.   |
| WB          |           | 1/100 - 1/500. Detects a band of approximately 27 kDa (predicted molecular weight: 27 kDa). |
| IHC-P       |           | 1/50 - 1/100.   |

## Target

|   |                                     |
|---|-------------------------------------|
| <b>Sequence similarities</b>            | To the N-terminal section of DKK-3. |
| <b>Post-translational modifications</b> | N-glycosylated.                     |
| <b>Cellular localization</b>            | Secreted.                           |

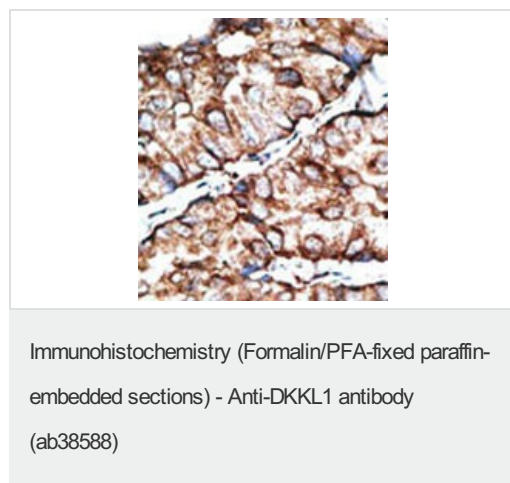
## Images



Anti-DKKL1 antibody (ab38588) + Mouse testis tissue lysate

**Predicted band size:** 27 kDa

**Observed band size:** 27 kDa



Formalin-fixed paraffin-embedded human breast cancer tissue with DKKL1 antibody ab38588, which was peroxidase-conjugated to the secondary antibody, followed by AEC staining.

**Please note:** All products are "FOR RESEARCH USE ONLY AND ARE NOT INTENDED FOR DIAGNOSTIC OR THERAPEUTIC USE"

## **Our Abpromise to you: Quality guaranteed and expert technical support**

---

- Replacement or refund for products not performing as stated on the datasheet
- Valid for 12 months from date of delivery
- Response to your inquiry within 24 hours
  
- We provide support in Chinese, English, French, German, Japanese and Spanish
- Extensive multi-media technical resources to help you
- We investigate all quality concerns to ensure our products perform to the highest standards

If the product does not perform as described on this datasheet, we will offer a refund or replacement. For full details of the Abpromise, please visit <https://www.abcam.com/abpromise> or contact our technical team.

## **Terms and conditions**

---

- Guarantee only valid for products bought direct from Abcam or one of our authorized distributors