

Product datasheet

Anti-CHRAC-17 antibody **ab74308**

[1 References](#) [3 Images](#)

Overview

Product name	Anti-CHRAC-17 antibody
Description	Rabbit polyclonal to CHRAC-17
Host species	Rabbit
Tested applications	Suitable for: WB, IP, IHC-P
Species reactivity	Reacts with: Mouse, Human Predicted to work with: Rat, Guinea pig, Cow, Chimpanzee, Rhesus monkey, Gorilla, Chinese hamster, Orangutan, Bat
Immunogen	Synthetic peptide within Human CHRAC-17 aa 97-147. The exact sequence is proprietary. NP_059139.2
Positive control	WB: Lysate from HeLa or HEK-293T cells.
General notes	Protein previously known as DNA Polymerase epsilon.

Properties

Form	Liquid
Storage instructions	Shipped at 4°C. Upon delivery aliquot and store at -20°C. Avoid freeze / thaw cycles.
Storage buffer	Preservative: 0.09% Sodium azide Constituents: 1.815% Tris, 1.764% Sodium citrate, 0.021% PBS
Purity	Immunogen affinity purified
Clonality	Polyclonal
Isotype	IgG

Applications

Our [Abpromise guarantee](#) covers the use of **ab74308** in the following tested applications.

The application notes include recommended starting dilutions; optimal dilutions/concentrations should be determined by the end user.

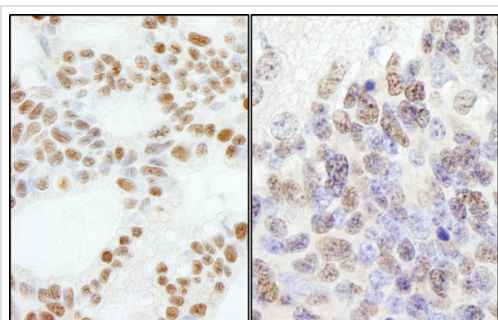
Application	Abreviews	Notes
WB		1/2000 - 1/10000. Predicted molecular weight: 16 kDa.

Application	Abreviews	Notes
IP		Use at 2-5 µg/mg of lysate.
IHC-P		1/1000 - 1/5000. Perform heat mediated antigen retrieval with citrate buffer pH 6 before commencing with IHC staining protocol.

Target

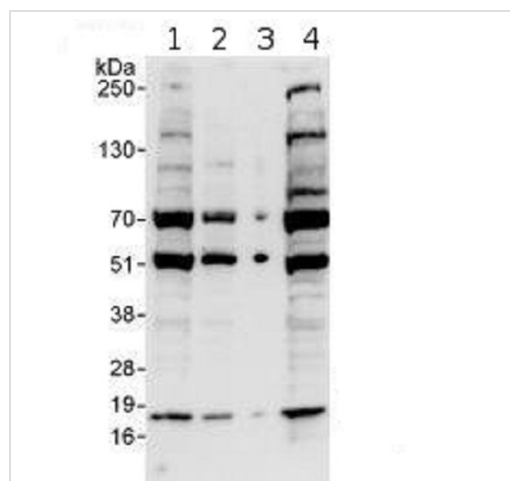
Function	Forms a complex with DNA polymerase epsilon subunit CHRAC1 and binds naked DNA, which is then incorporated into chromatin, aided by the nucleosome-remodeling activity of ISWI/SNF2H and ACF1.
Tissue specificity	Expressed in all tissues tested, including, heart, brain, placenta, lung, liver, skeletal muscle, kidney and pancreas.
Cellular localization	Nucleus.

Images



Immunohistochemistry (Formalin/PFA-fixed paraffin-embedded sections) analysis of human ovarian carcinoma (left) and mouse teratoma (right) tissues labeling CHRAC-17 with ab74308 at 1/5000 (0.2 µg/ml). Detection: DAB.

Immunohistochemistry (Formalin/PFA-fixed paraffin-embedded sections) - Anti-CHRAC-17 antibody (ab74308)



All lanes : Anti-CHRAC-17 antibody (ab74308) at 0.4 µg/ml

Lane 1 : Whole cell lysate from HeLa cells at 50 µg

Lane 2 : Whole cell lysate from HeLa cells at 15 µg

Lane 3 : Whole cell lysate from HeLa cells at 5 µg

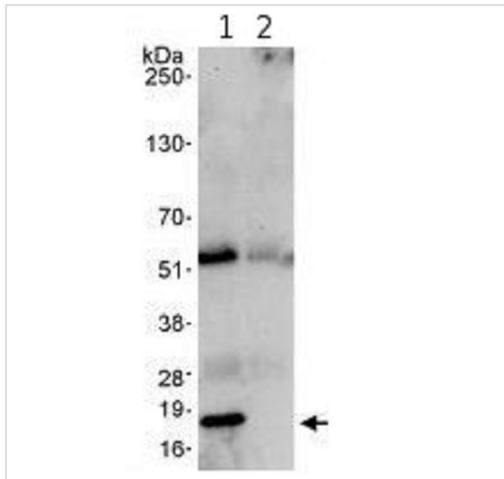
Lane 4 : Whole cell lysate from HEK-293T cells at 50 µg

Predicted band size: 16 kDa

Observed band size: 18 kDa

[why is the actual band size different from the predicted?](#)

Western blot - Anti-CHRAC-17 antibody (ab74308)



Immunoprecipitation - Anti-CHRAC-17 antibody
(ab74308)

Detection of human CHRAC-17 by immunoprecipitation of 1 mg HeLa cells whole lysate, using ab74308 at 3 µg/mg lysate (lane 1, 20% IP loaded) or a control IgG (lane 2, 20% IP loaded). The post-IP WB was performed using ab74308 at 1 µg/ml.

Detection: chemiluminescence with an exposure time of 30 seconds.

Please note: All products are "FOR RESEARCH USE ONLY AND ARE NOT INTENDED FOR DIAGNOSTIC OR THERAPEUTIC USE"

Our Abpromise to you: Quality guaranteed and expert technical support

- Replacement or refund for products not performing as stated on the datasheet
- Valid for 12 months from date of delivery
- Response to your inquiry within 24 hours
- We provide support in Chinese, English, French, German, Japanese and Spanish
- Extensive multi-media technical resources to help you
- We investigate all quality concerns to ensure our products perform to the highest standards

If the product does not perform as described on this datasheet, we will offer a refund or replacement. For full details of the Abpromise, please visit <https://www.abcam.com/abpromise> or contact our technical team.

Terms and conditions

- Guarantee only valid for products bought direct from Abcam or one of our authorized distributors