


Product datasheet

Anti-DNAJB6 antibody ab96539

1 References 2 Images

Overview

Product name	Anti-DNAJB6 antibody
Description	Rabbit polyclonal to DNAJB6
Host species	Rabbit
Tested applications	Suitable for: WB, ICC/IF
Species reactivity	Reacts with: Human Predicted to work with: Mouse, Rat, Cow 
Immunogen	Recombinant protein fragment with a sequence corresponding to a region within amino acids 1 and 126 of Human DNAJB6 (NP_490647).
Positive control	HeLaS3 and MOLT4 cell lysates for WB and HeLa cells for IF

Properties

Form	Liquid
Storage instructions	Shipped at 4°C. Upon delivery aliquot and store at -20°C or -80°C. Avoid repeated freeze / thaw cycles.
Storage buffer	Preservative: 0.01% Thimerosal (merthiolate) Constituents: 10% Glycerol, 0.1M Tris, 0.1M Glycine, pH 7.0
Purity	Immunogen affinity purified
Clonality	Polyclonal
Isotype	IgG

Applications

Our [Abpromise guarantee](#) covers the use of **ab96539** in the following tested applications.

The application notes include recommended starting dilutions; optimal dilutions/concentrations should be determined by the end user.

Application	Abreviews	Notes
WB		1/500 - 1/3000. Predicted molecular weight: 36 kDa.
ICC/IF		1/100 - 1/200.

Target

Function

Plays an indispensable role in the organization of KRT8/KRT18 filaments. Acts as an endogenous molecular chaperone for neuronal proteins including huntingtin. Suppresses aggregation and toxicity of polyglutamine-containing, aggregation-prone proteins. Isoform B but not isoform A inhibits huntingtin aggregation. Has a stimulatory effect on the ATPase activity of HSP70 in a dose-dependent and time-dependent manner and hence acts as a co-chaperone of HSP70. Also reduces cellular toxicity and caspase-3 activity.

Tissue specificity

Widely expressed. Highest levels in testis and brain, and lower levels in heart, spleen, intestine, ovary, placenta, lung, kidney, pancreas, thymus, prostate, skeletal muscle, liver and leukocytes. In testis, expressed in germ cells in the earlier stages of differentiation pathway as well as in spermatids. In brain, expressed at a higher level in hippocampus and thalamus and a lower level in amygdala, substantia nigra, corpus callosum and caudate nucleus.

Involvement in disease

Limb-girdle muscular dystrophy 1E

Sequence similarities

Contains 1 J domain.

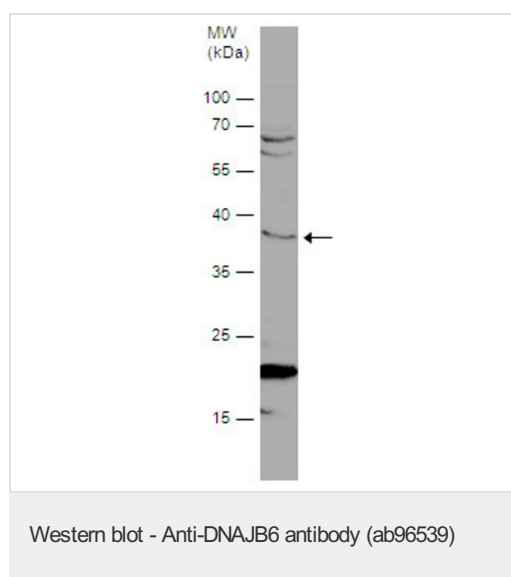
Domain

The antiaggregation activity of isoform B resides in the serine-rich region and the C-terminus.

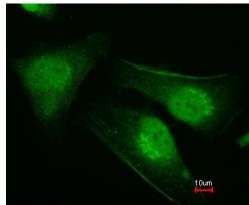
Cellular localization

Cytoplasm, perinuclear region. Nucleus. Cytoplasm, myofibril, sarcomere, Z line.

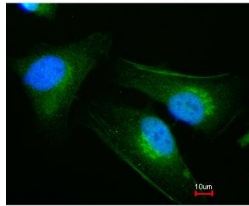
Images



MDA-MB-231 whole cell extract (30 µg)
separated by 12% SDS-PAGE. Anti-DNAJB6
antibody (ab96539) at 1/500 dilution.



Panel 1



Panel 2

ab96539, at 1/200, staining paraformaldehyde-fixed HeLa cells by Immunofluorescence (Panel 1) and merged with DNA probe (Panel 2).

Immunocytochemistry/ Immunofluorescence - Anti-DNAJB6 antibody (ab96539)

Please note: All products are "FOR RESEARCH USE ONLY AND ARE NOT INTENDED FOR DIAGNOSTIC OR THERAPEUTIC USE"

Our Abpromise to you: Quality guaranteed and expert technical support

- Replacement or refund for products not performing as stated on the datasheet
- Valid for 12 months from date of delivery
- Response to your inquiry within 24 hours
- We provide support in Chinese, English, French, German, Japanese and Spanish
- Extensive multi-media technical resources to help you
- We investigate all quality concerns to ensure our products perform to the highest standards

If the product does not perform as described on this datasheet, we will offer a refund or replacement. For full details of the Abpromise, please visit <https://www.abcam.com/abpromise> or contact our technical team.

Terms and conditions

- Guarantee only valid for products bought direct from Abcam or one of our authorized distributors