

Product datasheet

Anti-DP2 antibody ab26260

★★★★☆ 1 Abreviews 2 Images

Overview

Product name	Anti-DP2 antibody
Description	Rabbit polyclonal to DP2
Host species	Rabbit
Specificity	ab26260 recognises TFDP2.
Tested applications	Suitable for: WB, IHC-P, ELISA
Species reactivity	Reacts with: Human Predicted to work with: Rat, Cow, Dog
Immunogen	Synthetic peptide: MIISTPQRLT SSGSVLIGSP YTPAPAMVTQ THIAEATGWV PGDRKRARKF, corresponding to a region within N terminal amino acids 1-50 of Human DP2 Run BLAST with ExPASy Run BLAST with NCBI
Positive control	Jurkat cell lysate

Properties

Form	Liquid
Storage instructions	Shipped at 4°C. Store at +4°C short term (1-2 weeks). Upon delivery aliquot. Store at -20°C or -80°C. Avoid freeze / thaw cycle.
Storage buffer	Preservative: 0.09% Sodium azide Constituents: 2% Sucrose, PBS
Purity	Protein A purified
Clonality	Polyclonal
Isotype	IgG

Applications

Our [Abpromise guarantee](#) covers the use of **ab26260** in the following tested applications.

The application notes include recommended starting dilutions; optimal dilutions/concentrations should be determined by the end user.

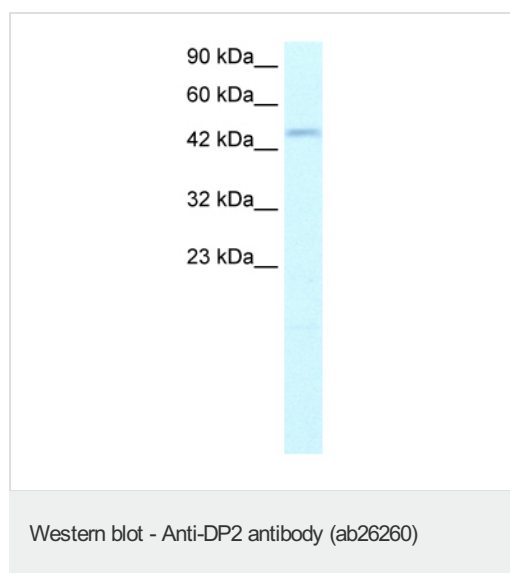
Application	Abreviews	Notes
-------------	-----------	-------

Application	Abreviews	Notes
WB	★★★★☆	Use a concentration of 1.25 µg/ml. Detects a band of approximately 49 kDa (predicted molecular weight: 49 kDa). Good results were obtained when blocked with 5% non-fat dry milk in 0.05% PBS-T.
IHC-P		Use at an assay dependent concentration.
ELISA		1/62500.

Target

Function	Can stimulate E2F-dependent transcription. Binds DNA cooperatively with E2F family members through the E2 recognition site, 5'-TTTC[CG]CGC-3', found in the promoter region of a number of genes whose products are involved in cell cycle regulation or in DNA replication. The DP2/E2F complex functions in the control of cell-cycle progression from G1 to S phase. The E2F-1/DP complex appears to mediate both cell proliferation and apoptosis.
Tissue specificity	High levels in heart and skeletal muscle. Also found in placenta, kidney, brain, lung and liver. The presence as well as the abundance of the different transcripts appear to vary significantly in different tissues and cell lines.
Sequence similarities	Belongs to the E2F/DP family.
Post-translational modifications	Ser-24 is probably phosphorylated by CDK2.
Cellular localization	Nucleus.

Images



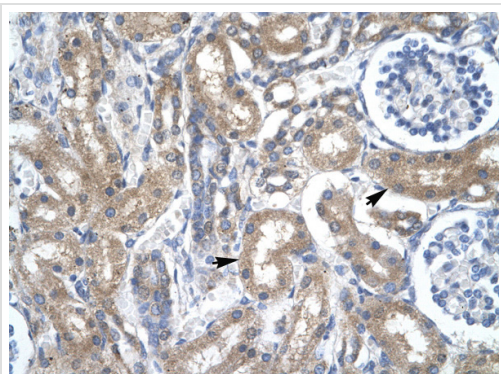
Anti-DP2 antibody (ab26260) at 1.25 µg/ml + Jurkat cell lysate

Secondary

HRP conjugated anti-Rabbit IgG diluted 1/50000 - 1/100000

Predicted band size: 49 kDa

Observed band size: 49 kDa



Staining of human kidney tissue with ab26260 (4-8 ug/ml). Positive labelled epithelial cells of renal tubule are indicated with arrows. 400X magnification.

Immunohistochemistry (Formalin/PFA-fixed paraffin-embedded sections) - Anti-DP2 antibody (ab26260)

Please note: All products are "FOR RESEARCH USE ONLY AND ARE NOT INTENDED FOR DIAGNOSTIC OR THERAPEUTIC USE"

Our Abpromise to you: Quality guaranteed and expert technical support

- Replacement or refund for products not performing as stated on the datasheet
- Valid for 12 months from date of delivery
- Response to your inquiry within 24 hours

- We provide support in Chinese, English, French, German, Japanese and Spanish
- Extensive multi-media technical resources to help you
- We investigate all quality concerns to ensure our products perform to the highest standards

If the product does not perform as described on this datasheet, we will offer a refund or replacement. For full details of the Abpromise, please visit <https://www.abcam.com/abpromise> or contact our technical team.

Terms and conditions

- Guarantee only valid for products bought direct from Abcam or one of our authorized distributors