

Product datasheet

Anti-DUSP10 antibody - Carboxyterminal end ab71532

[1 References](#) [2 Images](#)

Overview

Product name	Anti-DUSP10 antibody - Carboxyterminal end
Description	Rabbit polyclonal to DUSP10 - Carboxyterminal end
Host species	Rabbit
Tested applications	Suitable for: WB, ELISA, IHC-P
Species reactivity	Reacts with: Human
Immunogen	KLH-conjugated synthetic peptide from the C-terminal region of human DUSP10.
Positive control	Human breast carcinoma tissue; CEM cell line lysate.

Properties

Form	Liquid
Storage instructions	Shipped at 4°C. Upon delivery aliquot and store at -20°C. Avoid freeze / thaw cycles.
Storage buffer	Preservative: 0.09% Sodium Azide Constituents: PBS
Purity	Protein G purified
Purification notes	The antibody was purified through a protein G column, eluted with high and low pH buffers and neutralized immediately, followed by dialysis against PBS.
Clonality	Polyclonal
Isotype	IgG

Applications

Our [Abpromise guarantee](#) covers the use of **ab71532** in the following tested applications.

The application notes include recommended starting dilutions; optimal dilutions/concentrations should be determined by the end user.

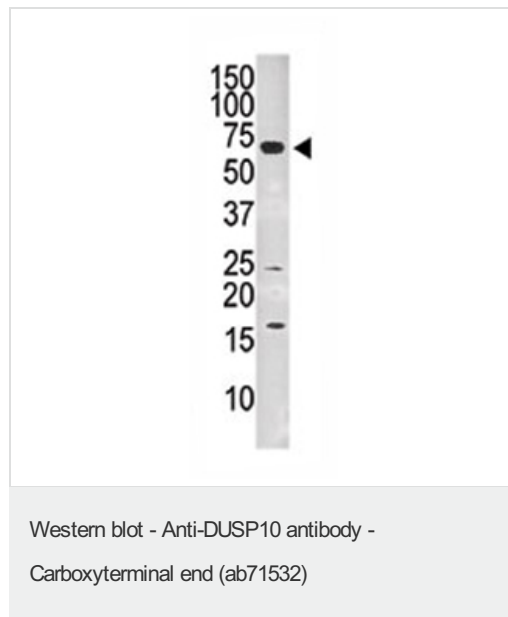
Application	Abreviews	Notes
WB		1/100 - 1/500. Predicted molecular weight: 53 kDa.
ELISA		1/1000.

Application	Abreviews	Notes
IHC-P		1/50 - 1/100.

Target

Function	Involved in the inactivation of MAP kinases. Has a specificity for the MAPK11/MAPK12/MAPK13/MAPK14 subfamily.
Sequence similarities	Belongs to the protein-tyrosine phosphatase family. Non-receptor class dual specificity subfamily. Contains 1 rhodanese domain. Contains 1 tyrosine-protein phosphatase domain.
Cellular localization	Cytoplasm. Nucleus.

Images

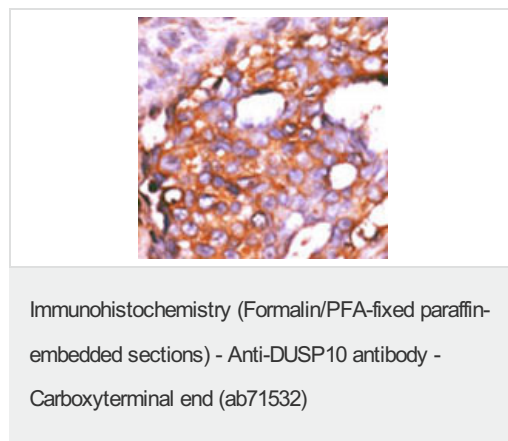


Anti-DUSP10 antibody - Carboxyterminal end (ab71532) at 1/60 dilution + CEM cell line lysate at 35 µg

Predicted band size: 53 kDa

Observed band size: 70 kDa

Additional bands at: 17 kDa, 25 kDa. We are unsure as to the identity of these extra bands.



Analysis of DUSP10 expression on formalin-fixed, paraffin-embedded human breast carcinoma tissue using ab71532 at 1:50 dilution (peroxidase-conjugated secondary antibody, AEC staining).

Our Abpromise to you: Quality guaranteed and expert technical support

- Replacement or refund for products not performing as stated on the datasheet
- Valid for 12 months from date of delivery
- Response to your inquiry within 24 hours

- We provide support in Chinese, English, French, German, Japanese and Spanish
- Extensive multi-media technical resources to help you
- We investigate all quality concerns to ensure our products perform to the highest standards

If the product does not perform as described on this datasheet, we will offer a refund or replacement. For full details of the Abpromise, please visit <https://www.abcam.com/abpromise> or contact our technical team.

Terms and conditions

- Guarantee only valid for products bought direct from Abcam or one of our authorized distributors