

## Product datasheet

# Anti-DUSP8 antibody ab79034

1 Image

### Overview

<b>Product name</b>	Anti-DUSP8 antibody
<b>Description</b>	Rabbit polyclonal to DUSP8
<b>Host species</b>	Rabbit
<b>Tested applications</b>	<b>Suitable for:</b> WB, IHC-P
<b>Species reactivity</b>	<b>Reacts with:</b> Human <b>Predicted to work with:</b> Mouse
<b>Immunogen</b>	Synthetic peptide: ISRSATIAIA YIMKTMGMSS DDAYRFVKDR RPSISPNFNF LGQLLEYERS L, corresponding to a portion of amino acids 250- 300 of Human DUSP8 <a href="#">Run BLAST with ExPASy</a> <a href="#">Run BLAST with NCBI</a>
<b>Positive control</b>	Heart tissue

### Properties

<b>Form</b>	Liquid
<b>Storage instructions</b>	Shipped at 4°C. Store at +4°C short term (1-2 weeks). Upon delivery aliquot. Store at -20°C. Avoid freeze / thaw cycle.
<b>Storage buffer</b>	Preservative: 0.05% Sodium azide Constituent: PBS
<b>Purity</b>	Protein G purified
<b>Clonality</b>	Polyclonal
<b>Isotype</b>	IgG

### Applications

Our [Abpromise guarantee](#) covers the use of **ab79034** in the following tested applications.

The application notes include recommended starting dilutions; optimal dilutions/concentrations should be determined by the end user.

Application	Abreviews	Notes
WB		

Application	Abreviews	Notes
-------------	-----------	-------

IHC-P

#### Application notes

IHC-P: Use at a concentration of 10 µg/ml.  
 WB: Use at a concentration of 1 - 3 µg/ml. Predicted molecular weight: 66 kDa.

Not yet tested in other applications.  
 Optimal dilutions/concentrations should be determined by the end user.

#### Target

##### Function

This protein shows both activity toward tyrosine-protein phosphate as well as with serine/threonine-protein phosphate.

##### Tissue specificity

Abundant in brain, heart and skeletal muscle.

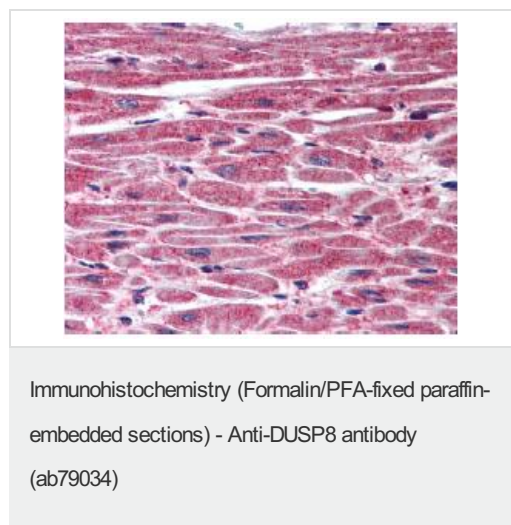
##### Sequence similarities

Belongs to the protein-tyrosine phosphatase family. Non-receptor class dual specificity subfamily. Contains 1 rhodanese domain. Contains 1 tyrosine-protein phosphatase domain.

##### Cellular localization

Cytoplasm. Nucleus.

#### Images



ab79034, at 1-3 µg/ml, staining of Formalin-Fixed Paraffin-Embedded Human Heart tissue by Immunohistochemistry.

**Please note:** All products are "FOR RESEARCH USE ONLY AND ARE NOT INTENDED FOR DIAGNOSTIC OR THERAPEUTIC USE"

#### Our Abpromise to you: Quality guaranteed and expert technical support

- Replacement or refund for products not performing as stated on the datasheet
- Valid for 12 months from date of delivery
- Response to your inquiry within 24 hours
- We provide support in Chinese, English, French, German, Japanese and Spanish
- Extensive multi-media technical resources to help you

- We investigate all quality concerns to ensure our products perform to the highest standards

If the product does not perform as described on this datasheet, we will offer a refund or replacement. For full details of the Abpromise, please visit <https://www.abcam.com/abpromise> or contact our technical team.

### **Terms and conditions**

---

- Guarantee only valid for products bought direct from Abcam or one of our authorized distributors