

Product datasheet

Anti-DUT antibody ab13690

2 References 1 Image

Overview

Product name	Anti-DUT antibody
Description	Rabbit polyclonal to DUT
Host species	Rabbit
Tested applications	Suitable for: WB
Species reactivity	Reacts with: Human
Immunogen	Synthetic peptide, corresponding to amino acids 25-44 (NARGTAEGRSRGTLRARPAP) and 113-130 (QLRFARLSEHATAPTRGS) of Human DUT-N.
Positive control	HeLa cell lysate.

Properties

Form	Liquid
Storage instructions	Shipped at 4°C. Store at +4°C short term (1-2 weeks). Store at -20°C or -80°C. Avoid freeze / thaw cycle.
Storage buffer	Preservative: 0.02% Sodium Azide Constituents: PBS
Purity	Protein G purified
Purification notes	This antibody is affinity purified.
Clonality	Polyclonal
Isotype	IgG

Applications

Our [Abpromise guarantee](#) covers the use of **ab13690** in the following tested applications.

The application notes include recommended starting dilutions; optimal dilutions/concentrations should be determined by the end user.

Application	Abreviews	Notes
-------------	-----------	-------

WB

Application notes WB: 1/1000 - 1/2000. Detects a band of approximately 21 kDa (predicted molecular weight: 27

kDa).

Not tested in other applications.

Optimal dilutions/concentrations should be determined by the end user.

Please note:

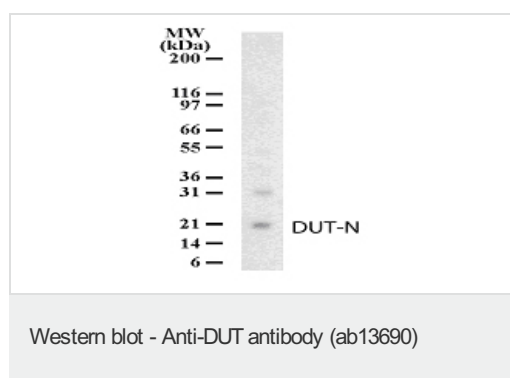
Quality control data for this antibody: 20 ug of HeLa cell lysate was used in one lane of a mini blot. At a 1 min exposure, two bands are seen (as shown on the datasheet): a predominant band at 21 kDa and a lighter band at ~31 kDa.

At a 15 min exposure, a 90 kDa band is also observed, along with much lighter bands at 66 and 55 kDa. Therefore please note that additional bands can appear with prolonged exposure, high antibody concentrations or high lysate concentrations, this may mask the specific band.

Target

Function	This enzyme is involved in nucleotide metabolism: it produces dUMP, the immediate precursor of thymidine nucleotides and it decreases the intracellular concentration of dUTP so that uracil cannot be incorporated into DNA.
Tissue specificity	Found in a variety of tissues.
Pathway	Pyrimidine metabolism; dUMP biosynthesis; dUMP from dCTP (dUTP route): step 2/2.
Sequence similarities	Belongs to the dUTPase family.
Post-translational modifications	Phosphorylation in mature T-cells occur in a cell cycle-dependent manner.
Cellular localization	Mitochondrion and Nucleus.

Images



Western blot detection of DUT-N in HeLa cell lysate using ab13690 at a dilution of 1:1,000.

Western blot detection of DUT-N in HeLa cell lysate using ab13690 at a dilution of 1:1,000.

Please note: All products are "FOR RESEARCH USE ONLY AND ARE NOT INTENDED FOR DIAGNOSTIC OR THERAPEUTIC USE"

Our Abpromise to you: Quality guaranteed and expert technical support

- Replacement or refund for products not performing as stated on the datasheet
- Valid for 12 months from date of delivery
- Response to your inquiry within 24 hours
- We provide support in Chinese, English, French, German, Japanese and Spanish

- Extensive multi-media technical resources to help you
- We investigate all quality concerns to ensure our products perform to the highest standards

If the product does not perform as described on this datasheet, we will offer a refund or replacement. For full details of the Abpromise, please visit <https://www.abcam.com/abpromise> or contact our technical team.

Terms and conditions

- Guarantee only valid for products bought direct from Abcam or one of our authorized distributors