

Product datasheet

Anti-E2 tag antibody [3F12] ab978

[7 References](#) [1 Image](#)

Overview

Product name	Anti-E2 tag antibody [3F12]
Description	Mouse monoclonal [3F12] to E2 tag
Host species	Mouse
Tested applications	Suitable for: WB, IP, ICC/IF
Epitope	GVSSTSSDFRDR(linear)
General notes	E2TAG having sequence SSTSSDFRDR or GVSSTSSDFRDR and antibodies specific for the peptide tag are covered by PCT Patent No PCT/EE01/00001 held by Quattromed Ltd. End-user is granted to use the licenced technology solely for internal research purpose only. This antibody should be used in conjunction with the E2 tagging vectors (links to the appropriate datasheet can be found in the Related Products section at the bottom of the datasheet).

Properties

Form	Liquid
Storage instructions	Shipped at 4°C. Store at +4°C short term (1-2 weeks). Upon delivery aliquot. Store at -20°C or -80°C. Avoid freeze / thaw cycle.
Storage buffer	Preservative: 0.1% Sodium azide Constituents: 50% Glycerol, 0.87% Sodium chloride
Purity	Protein A purified
Clonality	Monoclonal
Clone number	3F12
Isotype	IgG1

Applications

Our [Abpromise guarantee](#) covers the use of **ab978** in the following tested applications.

The application notes include recommended starting dilutions; optimal dilutions/concentrations should be determined by the end user.

Application	Abreviews	Notes
WB		

Application	Abreviews	Notes
IP		
ICC/IF		

Application notes

IF(ICC): 1/500- 1/1000 (1hr,RT) (dilute in 1% BSA in PBS).
 IP: Use at an assay dependent dilution to isolate E2Tag-tagged proteins and associated proteins/protein binding partners. Use protein G-agarose.
 WB: 1/1000 - 1/5000 (1hr, RT) (dilute in 1% non-fat dry milk in TBST).
 (Background can be reduced by adding NaCl up to a concentration of 1.5 M.)

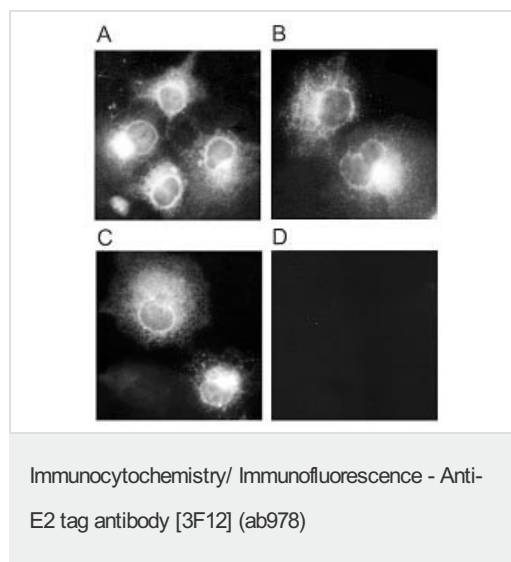
Not tested in other applications.
 Optimal dilutions/concentrations should be determined by the end user.

Target

Relevance

The E2Tag is a peptide which is derived from the Bovine Pappillomavirus type-1 transactivator protein E2 and consists of 10 amino acids(SSTSSDFRDR). The detection of E2-tagged proteins is based on the binding of mouse monoclonal antibodies specific to the tagged recombinant protein.

Images



Staining of transfected COS-7 cells with COX-2 specific antibody (A, B, D) and with E2Tag-specific antibody (3F12)(C).

A - pcDNA3.1 rabbit COX-2,

B - pCG-E2Tag-COX,

C - pCG-COX[E2Tag]

D – neg. control, carrier DNA alone

Please note: All products are "FOR RESEARCH USE ONLY AND ARE NOT INTENDED FOR DIAGNOSTIC OR THERAPEUTIC USE"

Our Abpromise to you: Quality guaranteed and expert technical support

- Replacement or refund for products not performing as stated on the datasheet
- Valid for 12 months from date of delivery
- Response to your inquiry within 24 hours

- We provide support in Chinese, English, French, German, Japanese and Spanish
- Extensive multi-media technical resources to help you
- We investigate all quality concerns to ensure our products perform to the highest standards

If the product does not perform as described on this datasheet, we will offer a refund or replacement. For full details of the Abpromise, please visit <https://www.abcam.com/abpromise> or contact our technical team.

Terms and conditions

- Guarantee only valid for products bought direct from Abcam or one of our authorized distributors