




Product datasheet

Anti-S1P1/EDG1 antibody ab11424

★★★★☆ 3 Abreviews 9 References 4 Images

Overview

Product name	Anti-S1P1/EDG1 antibody
Description	Rabbit polyclonal to S1P1/EDG1
Host species	Rabbit
Specificity	ab11424 detects S1P1/EDG1 protein in transfected human cell samples. This antibody shows no cross-reactivity to S1P3.
Tested applications	Suitable for: ICC/IF, WB, IP, Flow Cyt, IHC-P
Species reactivity	Reacts with: Mouse, Human Predicted to work with: Rat, Horse, Cow, Cat, Monkey 
Immunogen	Synthetic peptide corresponding to Mouse S1P1/EDG1 aa 359-372. Sequence: SHPQKDDGDNPETI (Peptide available as ab39763)  Run BLAST with  Run BLAST with
Positive control	Transfected HEK293 cells.

Properties

Form	Liquid
Storage instructions	Shipped at 4°C. Store at +4°C short term (1-2 weeks). Upon delivery aliquot. Store at -20°C or -80°C. Avoid freeze / thaw cycle.
Storage buffer	Preservative: 0.05% Sodium azide Constituents: 99% PBS, 1% BSA
Purity	Immunogen affinity purified
Clonality	Polyclonal
Isotype	IgG

Applications

Our [Abpromise guarantee](#) covers the use of **ab11424** in the following tested applications.

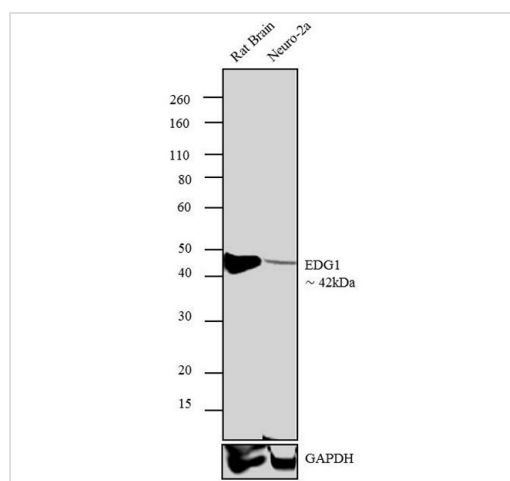
The application notes include recommended starting dilutions; optimal dilutions/concentrations should be determined by the end user.

Application	Abreviews	Notes
ICC/IF		Use a concentration of 5 µg/ml.
WB	★★★★☆	Use a concentration of 1 µg/ml. Detects a band of approximately 44 kDa. Can be blocked with Human S1P1/EDG1 peptide (ab39763) . Band represents recombinant S1P1 from transfected HEK293 cells.
IP		Use at an assay dependent concentration.
Flow Cyt		Use at an assay dependent concentration. PubMed: 20733200 ab171870 - Rabbit polyclonal IgG, is suitable for use as an isotype control with this antibody.
IHC-P		Use at an assay dependent concentration.

Target

Function	Receptor for the lysosphingolipid sphingosine 1-phosphate (S1P). S1P is a bioactive lysophospholipid that elicits diverse physiological effect on most types of cells and tissues. This inducible epithelial cell G-protein-coupled receptor may be involved in the processes that regulate the differentiation of endothelial cells. Seems to be coupled to the G(i) subclass of heteromeric G proteins.
Tissue specificity	Endothelial cells, and to a lesser extent, in vascular smooth muscle cells, fibroblasts, melanocytes, and cells of epithelioid origin.
Sequence similarities	Belongs to the G-protein coupled receptor 1 family.
Post-translational modifications	S1P-induced endothelial cell migration requires the PKB/AKT1-mediated phosphorylation of the third intracellular loop at the Thr-236 residue.
Cellular localization	Cell membrane.

Images



Western blot - Anti-S1P1/EDG1 antibody (ab11424)

Lane 1 : Anti-S1P1/EDG1 antibody (ab11424) at 2 µg/ml

Lane 2 : Anti-S1P1/EDG1 antibody (ab11424) at 2 mg/ml

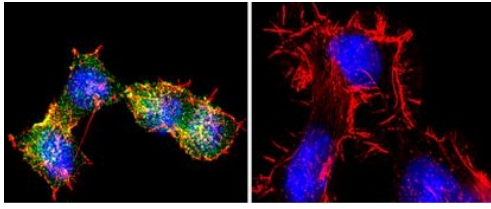
Lane 1 : Rat brain tissue extract

Lane 2 : Neuro-2a Cells

Secondary

All lanes : Goat anti-rabbit IgG (H+L), HRP conjugated at 0.4 µg/ml

Developed using the ECL technique.



Immunocytochemistry/ Immunofluorescence - Anti-S1P1/EDG1 antibody (ab11424)

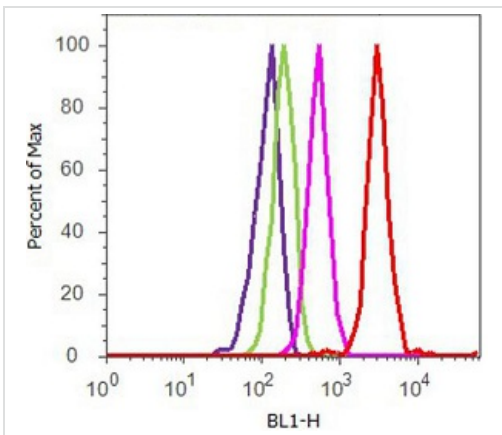
Immunocytochemical analysis of Neuro-2a cells, labeling S1P1/EDG1 with ab11424. Cells were fixed in 4% paraformaldehyde for 10 minutes, permeabilized with 0.1% Triton™ X-100 for 10 minutes, and blocked with 1% BSA for 1 hour at room temperature. Immunostaining with anti-EDG1 diluted 2µg/ml in 0.1% BSA for 3 hours at room temperature.

Green staining - ab11424

Blue staining - DAPI for nuclear localization

Red staining - F-actin

The right-most image is a control (no primary antibody staining).



Flow Cytometry - Anti-S1P1/EDG1 antibody (ab11424)

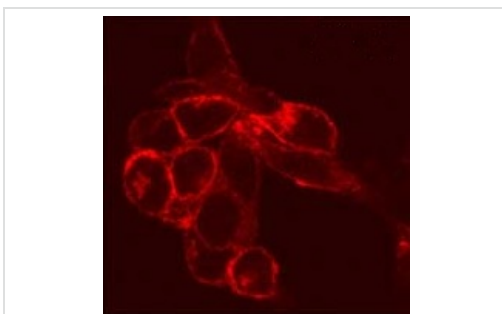
Flow cytometry analysis of SH-SY5Y cells, labeling S1P1/EDG1 with ab11424 (3-5µg/million cells in 2.5% BSA). Cells were fixed with 70% ethanol for 10 minutes, permeabilized with 0.25% Triton™ X-100 for 20 minutes and blocked with 5% BSA for 30 minutes at room temperature.

Red histogram - labeling with anti-S1P1/EDG1 antibody

Purple histogram - Unstained

Green histogram - No primary antibody control

Pink histogram - Rabbit Isotype control



Immunocytochemistry/ Immunofluorescence - Anti-S1P1/EDG1 antibody (ab11424)

ab11424 staining S1P1/EDG1 in transfected CCL39 cells by Immunocytochemistry/ Immunofluorescence.

Please note: All products are "FOR RESEARCH USE ONLY AND ARE NOT INTENDED FOR DIAGNOSTIC OR THERAPEUTIC USE"

Our Promise to you: Quality guaranteed and expert technical support

- Replacement or refund for products not performing as stated on the datasheet
- Valid for 12 months from date of delivery
- Response to your inquiry within 24 hours

- We provide support in Chinese, English, French, German, Japanese and Spanish
- Extensive multi-media technical resources to help you
- We investigate all quality concerns to ensure our products perform to the highest standards

If the product does not perform as described on this datasheet, we will offer a refund or replacement. For full details of the Abpromise, please visit <https://www.abcam.com/abpromise> or contact our technical team.

Terms and conditions

- Guarantee only valid for products bought direct from Abcam or one of our authorized distributors