

Product datasheet

Anti-EDG8 antibody - Aminoterminal end ab60039

1 Image

Overview

Product name	Anti-EDG8 antibody - Aminoterminal end
Description	Rabbit polyclonal to EDG8 - Aminoterminal end
Host species	Rabbit
Tested applications	Suitable for: ELISA, IHC-P
Species reactivity	Reacts with: Human
Immunogen	Synthetic peptide (10-30 aa in length) at the N-terminal of first 50 aa of human EDG8 conjugated to KLH
Positive control	Human hepatocarcinoma tissue.

Properties

Form	Liquid
Storage instructions	Shipped at 4°C. Store at +4°C short term (1-2 weeks). Upon delivery aliquot. Store at -20°C or -80°C. Avoid freeze / thaw cycle.
Storage buffer	Preservative: 0.09% Sodium Azide Constituents: PBS
Purity	Protein G purified
Purification notes	ab60039 is purified through a protein G column and eluted out with both high and low pH buffers and neutralized immediately after elution then followed by dialysis against PBS.
Clonality	Polyclonal
Isotype	IgG

Applications

Our [Abpromise guarantee](#) covers the use of **ab60039** in the following tested applications.

The application notes include recommended starting dilutions; optimal dilutions/concentrations should be determined by the end user.

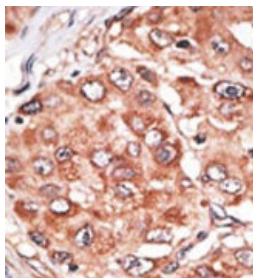
Application	Abreviews	Notes
ELISA		1/1000.

Application	Abreviews	Notes
IHC-P		1/50 - 1/100.

Target

Function	Receptor for the lysosphingolipid sphingosine 1-phosphate (S1P). S1P is a bioactive lysophospholipid that elicits diverse physiological effect on most types of cells and tissues. Is coupled to both the G(i/o)alpha and G(12) subclass of heteromeric G-proteins (By similarity). May play a regulatory role in the transformation of radial glial cells into astrocytes and may affect proliferative activity of these cells.
Tissue specificity	Widely expressed in the brain, most prominently in the corpus callosum, which is predominantly white matter. Detected in spleen, peripheral blood leukocytes, placenta, lung, aorta and fetal spleen. Low-level signal detected in many tissue extracts. Overexpressed in leukemic large granular lymphocytes. Isoform 1 is predominantly expressed in peripheral tissues. Isoform 2 is expressed in brain, spleen and peripheral blood leukocytes.
Sequence similarities	Belongs to the G-protein coupled receptor 1 family.
Developmental stage	At 24 weeks of gestation, fragments of radial glial fibers are positive within the cortical plate and subplate of allocortical areas. These positive fragments often appear enlarged as varicosities and some of them terminate at blood vessels. Between 28 and 30 weeks of gestation, all iso- and allocortical areas contain immunolabelled radial glial fibers revealing curvature next to sulci. After 32 weeks of gestation, radial glial fibers gradually disappear; instead positive transitional stages between radial glia and astrocytes were found.
Cellular localization	Cell membrane.

Images



ab60039 at 1/50 dilution staining EDG8 in Human hepatocarcinoma by Immunohistochemistry, Formalin-fixed, Paraffin-embedded tissue. A peroxidase-conjugated secondary antibody was used, followed by AEC staining.

Immunohistochemistry (Formalin/PFA-fixed paraffin-embedded sections) - Anti-EDG8 antibody - Aminoterminal end (ab60039)

Please note: All products are "FOR RESEARCH USE ONLY AND ARE NOT INTENDED FOR DIAGNOSTIC OR THERAPEUTIC USE"

Our Abpromise to you: Quality guaranteed and expert technical support

- Replacement or refund for products not performing as stated on the datasheet

- Valid for 12 months from date of delivery
- Response to your inquiry within 24 hours
- We provide support in Chinese, English, French, German, Japanese and Spanish
- Extensive multi-media technical resources to help you
- We investigate all quality concerns to ensure our products perform to the highest standards

If the product does not perform as described on this datasheet, we will offer a refund or replacement. For full details of the Abpromise, please visit <https://www.abcam.com/abpromise> or contact our technical team.

Terms and conditions

- Guarantee only valid for products bought direct from Abcam or one of our authorized distributors