


Product datasheet

Anti-EPCR/CD201 antibody ab78280

1 Image

Overview

Product name	Anti-EPCR/CD201 antibody
Description	Rabbit polyclonal to EPCR/CD201
Host species	Rabbit
Tested applications	Suitable for: WB
Species reactivity	Reacts with: Human Predicted to work with: Cow, Pig, Common marmoset 
Immunogen	Synthetic peptide conjugated to KLH derived from within residues 100 - 200 of Human EPCR/CD201. Read Abcam's proprietary immunogen policy (Peptide available as ab88138 .)
Positive control	This antibody gave a positive signal in the following tissue lysates: Human Heart; Human Lung.

Properties

Form	Liquid
Storage instructions	Shipped at 4°C. Store at +4°C short term (1-2 weeks). Upon delivery aliquot. Store at -20°C or -80°C. Avoid freeze / thaw cycle.
Storage buffer	Preservative: 0.02% Sodium Azide Constituents: 1% BSA, PBS, pH 7.4
Purity	Immunogen affinity purified
Clonality	Polyclonal
Isotype	IgG

Applications

Our [Abpromise guarantee](#) covers the use of **ab78280** in the following tested applications.

The application notes include recommended starting dilutions; optimal dilutions/concentrations should be determined by the end user.

Application	Abreviews	Notes
WB		Use a concentration of 1 µg/ml. Detects a band of approximately 24 kDa (predicted molecular weight: 27 kDa).

Target

Function

Binds activated protein C. Enhances protein C activation by the thrombin-thrombomodulin complex; plays a role in the protein C pathway controlling blood coagulation.

Tissue specificity

Expressed strongly in the endothelial cells of arteries and veins in heart and lung, less intensely in capillaries in the lung and skin, and not at all in the endothelium of small vessels of the liver and kidney.

Post-translational modifications

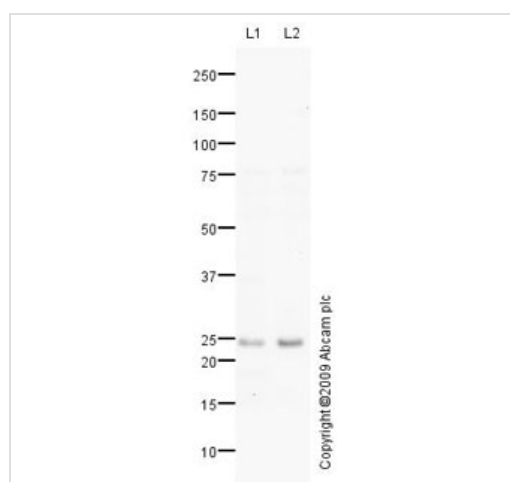
N-glycosylated.

A soluble form exists; probably released by a metalloprotease. Seems to have the same activity as the membrane-bound form.

Cellular localization

Membrane.

Images



Western blot - Anti-EPCR/CD201 antibody (ab78280)

All lanes : Anti-EPCR/CD201 antibody (ab78280) at 1 µg/ml

Lane 1 : Human heart tissue lysate - total protein (ab29431)

Lane 2 : Lung (Human) Tissue Lysate

Lysates/proteins at 10 µg per lane.

Secondary

All lanes : Goat polyclonal to Rabbit IgG - H&L - Pre-Adsorbed (HRP) at 1/3000 dilution

Developed using the ECL technique.

Performed under reducing conditions.

Predicted band size: 27 kDa

Observed band size: 24 kDa

Exposure time: 14 minutes

EPCR/CD201 has a 17 amino-acid signal sequence at its N-terminal (Swissprot).

Removal of this sequence could result in the migration of the protein at a slightly lower molecular weight than predicted.

Our Abpromise to you: Quality guaranteed and expert technical support

- Replacement or refund for products not performing as stated on the datasheet
- Valid for 12 months from date of delivery
- Response to your inquiry within 24 hours

- We provide support in Chinese, English, French, German, Japanese and Spanish
- Extensive multi-media technical resources to help you
- We investigate all quality concerns to ensure our products perform to the highest standards

If the product does not perform as described on this datasheet, we will offer a refund or replacement. For full details of the Abpromise, please visit <https://www.abcam.com/abpromise> or contact our technical team.

Terms and conditions

- Guarantee only valid for products bought direct from Abcam or one of our authorized distributors