

Product datasheet

Anti-ERG antibody ab96697

1 References 3 Images

Overview

| | |
|----------------------------|--|
| Product name | Anti-ERG antibody |
| Description | Rabbit polyclonal to ERG |
| Host species | Rabbit |
| Tested applications | Suitable for: WB, ICC/IF |
| Species reactivity | Reacts with: Human |
| Immunogen | Synthetic peptide corresponding to Human ERG aa 445-457. |
| Positive control | <div style="border: 1px solid #ccc; padding: 5px; display: inline-block;"> Purchase matching WB positive control: Recombinant Human ERG protein > </div> <p>WB: 293T, A431, H1299, HeLa, HepG2, MOLT4 and Raji cell lysates ICC/IF: Human pancreatic cancer cell line</p> |

Properties

| | |
|-----------------------------|---|
| Form | Liquid |
| Storage instructions | Shipped at 4°C. Upon delivery aliquot and store at -20°C or -80°C. Avoid repeated freeze / thaw cycles. |
| Storage buffer | pH: 7.00 Preservative: 0.01% Thimerosal (merthiolate) Constituents: 2.68% PBS, 1% BSA, 20% Glycerol |
| Purity | Protein A purified |
| Clonality | Polyclonal |
| Isotype | IgG |

Applications

Our [Abpromise guarantee](#) covers the use of **ab96697** in the following tested applications.

The application notes include recommended starting dilutions; optimal dilutions/concentrations should be determined by the end user.

| Application | Abreviews | Notes |
|-------------|-----------|--|
| WB | | 1/1000. Predicted molecular weight: for isoform 1, 55 , for isoform 2, 52 kDa. |
| ICC/IF | | 1/50. |

Target

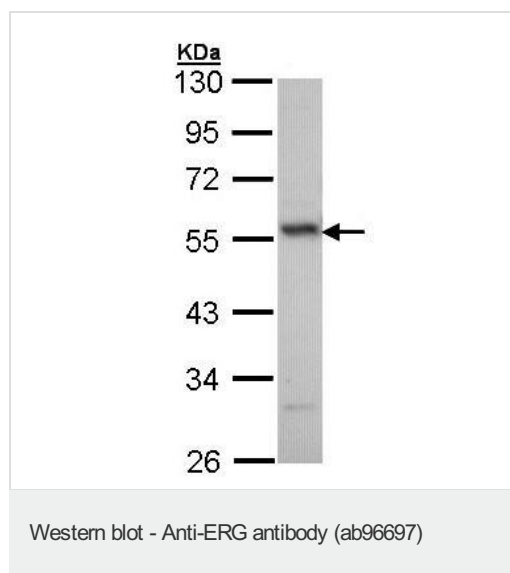
Function Transcriptional regulator. May participate in transcriptional regulation through the recruitment of SETDB1 histone methyltransferase and subsequent modification of local chromatin structure.

Involvement in disease Defects in ERG are a cause of Ewing sarcoma (ES) [MIM:612219]. A highly malignant, metastatic, primitive small round cell tumor of bone and soft tissue that affects children and adolescents. It belongs to the Ewing sarcoma family of tumors, a group of morphologically heterogeneous neoplasms that share the same cytogenetic features. They are considered neural tumors derived from cells of the neural crest. Ewing sarcoma represents the less differentiated form of the tumors. Note=A chromosomal aberration involving ERG is found in patients with Erwing sarcoma. Translocation t(21;22)(q22;q12) with EWSR1. Note=Chromosomal aberrations involving ERG have been found in acute myeloid leukemia (AML). Translocation t(16;21)(p11;q22) with FUS. Translocation t(X;21)(q25-26;q22) with ELF4.

Sequence similarities Belongs to the ETS family.
Contains 1 ETS DNA-binding domain.
Contains 1 PNT (pointed) domain.

Cellular localization Nucleus. Cytoplasm. Localized in cytoplasmic mRNP granules containing untranslated mRNAs.

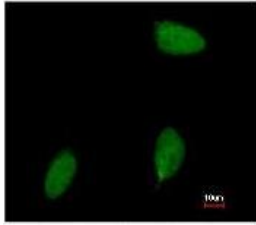
Images



Anti-ERG antibody (ab96697) at 1/1000 dilution + H1299 whole cell lysate at 30 µg

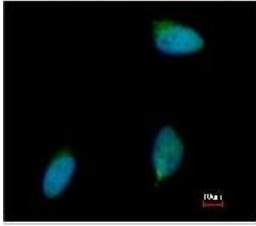
Predicted band size: for isoform 1, 55 , for isoform 2, 52 kDa

10% SDS PAGE

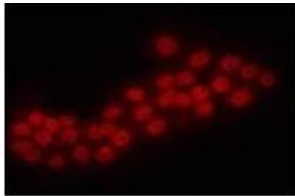


Immunofluorescence analysis of ERG in paraformaldehyde fixed Human pancreatic cancer cell line, using ab96697 at a 1/50 dilution.

Lower image: merged with DNA probe.



Immunocytochemistry/ Immunofluorescence - Anti-ERG antibody (ab96697)



Immunofluorescence analysis of ERG in paraformaldehyde fixed Human pancreatic cancer cell line, using ab96697 at a 1/50 dilution.

Immunocytochemistry/ Immunofluorescence - Anti-ERG antibody (ab96697)

Please note: All products are "FOR RESEARCH USE ONLY AND ARE NOT INTENDED FOR DIAGNOSTIC OR THERAPEUTIC USE"

Our Abpromise to you: Quality guaranteed and expert technical support

- Replacement or refund for products not performing as stated on the datasheet
- Valid for 12 months from date of delivery
- Response to your inquiry within 24 hours
- We provide support in Chinese, English, French, German, Japanese and Spanish
- Extensive multi-media technical resources to help you
- We investigate all quality concerns to ensure our products perform to the highest standards

If the product does not perform as described on this datasheet, we will offer a refund or replacement. For full details of the Abpromise, please visit <https://www.abcam.com/abpromise> or contact our technical team.

Terms and conditions

- Guarantee only valid for products bought direct from Abcam or one of our authorized distributors