

## Product datasheet

# Anti-ESE1 antibody [ELF3B10C4] $\alpha$ b50746

1 Image

### Overview

<b>Product name</b>	Anti-ESE1 antibody [ELF3B10C4]
<b>Description</b>	Mouse monoclonal [ELF3B10C4] to ESE1
<b>Host species</b>	Mouse
<b>Tested applications</b>	<b>Suitable for:</b> WB, Dot blot
<b>Species reactivity</b>	<b>Reacts with:</b> Recombinant fragment <b>Predicted to work with:</b> Human
<b>Immunogen</b>	Recombinant fragment (Human)

### Properties

<b>Form</b>	Liquid
<b>Storage instructions</b>	Shipped at 4°C. Store at +4°C short term (1-2 weeks). Upon delivery aliquot. Store at -20°C long term.
<b>Storage buffer</b>	Preservative: 0.05% Sodium Azide Constituents: 1% BSA, PBS, pH 7.4
<b>Purity</b>	Protein G purified
<b>Purification notes</b>	Protein G purified from culture of supernatant of hybridoma cultured in a medium containing bovine IgG-depleted (~95%) fetal bovine serum. Filtered through a 0.22 $\mu$ m membrane
<b>Clonality</b>	Monoclonal
<b>Clone number</b>	ELF3B10C4
<b>Isotype</b>	IgG1

### Applications

Our [Abpromise guarantee](#) covers the use of **ab50746** in the following tested applications.

The application notes include recommended starting dilutions; optimal dilutions/concentrations should be determined by the end user.

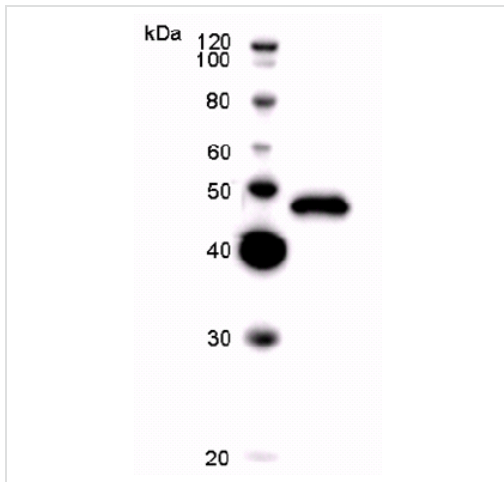
Application	Abreviews	Notes
WB		Use at an assay dependent dilution. Predicted molecular weight: 41 kDa.

Application	Abreviews	Notes
Dot blot		Use at an assay dependent dilution.

## Target

<b>Function</b>	Transcriptional activator that binds and transactivates ETS sequences containing the consensus nucleotide core sequence GGA[AT]. Acts synergistically with POU2F3 to transactivate the SPRR2A promoter and with RUNX1 to transactivate the ANGPT1 promoter. Also transactivates collagenase, CCL20, CLND7, FLG, KRT8, NOS2, PTGS2, SPRR2B, TGFBR2 and TGM3 promoters. Represses KRT4 promoter activity. Involved in mediating vascular inflammation. May play an important role in epithelial cell differentiation and tumorigenesis. May be a critical downstream effector of the ERBB2 signaling pathway. May be associated with mammary gland development and involution. Plays an important role in the regulation of transcription with TATA-less promoters in preimplantation embryos, which is essential in preimplantation development.
<b>Tissue specificity</b>	Expressed exclusively in tissues containing a high content of terminally differentiated epithelial cells including mammary gland, colon, trachea, kidney, prostate, uterus, stomach and skin.
<b>Sequence similarities</b>	Belongs to the ETS family. Contains 1 ETS DNA-binding domain. Contains 1 PNT (pointed) domain.
<b>Domain</b>	the 9aaTAD motif is a transactivation domain present in a large number of yeast and animal transcription factors.
<b>Cellular localization</b>	Cytoplasm. Nucleus. Localizes to the cytoplasm where it has been shown to transform MCF-12A mammary epithelial cells via a novel cytoplasmic mechanism. Also transiently expressed and localized to the nucleus where it induces apoptosis in non-transformed breast epithelial cells MCF-10A and MCF-12A via a transcription-dependent mechanism.

## Images



Western blot - Anti-ESE1 antibody [ELF3B10C4]  
(ab50746)

**Lane 1** : Molecular weight markers

**Lane 2** : Anti-ESE1 antibody [ELF3B10C4]  
(ab50746)

**Lane 2** : Immunising peptide

**Predicted band size:** 41 kDa

**Observed band size:** 57 kDa

This antibody has only been tested in WB against the recombinant fragment used as immunogen. We have no data on the detection of endogenous protein.

**Please note:** All products are "FOR RESEARCH USE ONLY AND ARE NOT INTENDED FOR DIAGNOSTIC OR THERAPEUTIC USE"

### Our Abpromise to you: Quality guaranteed and expert technical support

- Replacement or refund for products not performing as stated on the datasheet
- Valid for 12 months from date of delivery
- Response to your inquiry within 24 hours
- We provide support in Chinese, English, French, German, Japanese and Spanish
- Extensive multi-media technical resources to help you
- We investigate all quality concerns to ensure our products perform to the highest standards

If the product does not perform as described on this datasheet, we will offer a refund or replacement. For full details of the Abpromise, please visit <https://www.abcam.com/abpromise> or contact our technical team.

### Terms and conditions

- Guarantee only valid for products bought direct from Abcam or one of our authorized distributors