

Product datasheet

Anti-ETAA1 antibody ab122245

3 Images

Overview

Product name	Anti-ETAA1 antibody
Description	Rabbit polyclonal to ETAA1
Host species	Rabbit
Tested applications	Suitable for: WB, IHC-P, ICC/IF
Species reactivity	Reacts with: Human
Immunogen	DMPELFPSKT AHVTDQKEIC TFNSKTVKNT SRANTSPDAR LGDSKVLQDL SSKTYDRELI DAEYRFSPNS NKS NK, corresponding to amino acids 398-469 of Human ETAA1 (Q9NY74). Run BLAST with ExPASy Run BLAST with NCBI
Positive control	Human kidney tissue, Human cell line U-2 OS.

Properties

Form	Liquid
Storage instructions	Shipped at 4°C. Upon delivery aliquot and store at -20°C. Avoid repeated freeze / thaw cycles.
Storage buffer	pH: 7.20 Preservative: 0.02% Sodium azide Constituents: 59% PBS, 40% Glycerol
Purity	Immunogen affinity purified
Clonality	Polyclonal
Isotype	IgG

Applications

Our [Abpromise guarantee](#) covers the use of **ab122245** in the following tested applications.

The application notes include recommended starting dilutions; optimal dilutions/concentrations should be determined by the end user.

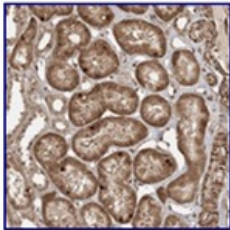
Application	Abreviews	Notes
WB		Use at an assay dependent concentration.

Application	Abreviews	Notes
IHC-P		1/200 - 1/500. Perform heat mediated antigen retrieval with citrate buffer pH 6 before commencing with IHC staining protocol.
ICC/IF		Use a concentration of 1 - 4 µg/ml. The following steps are recommended prior to antibody incubation: fixation of cells in ice cold 4% paraformaldehyde pH 7.2-7.3, followed by permeabilization with 0.1% Triton X-100 in PBS for 3x5 minutes.

Target

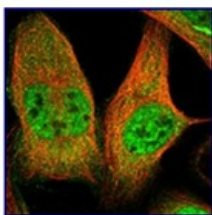
Tissue specificity	Expressed at high levels in the brain, liver kidney and Ewing tumor cell lines.
Post-translational modifications	Phosphorylated upon DNA damage, probably by ATM or ATR.
Cellular localization	Cytoplasm.

Images



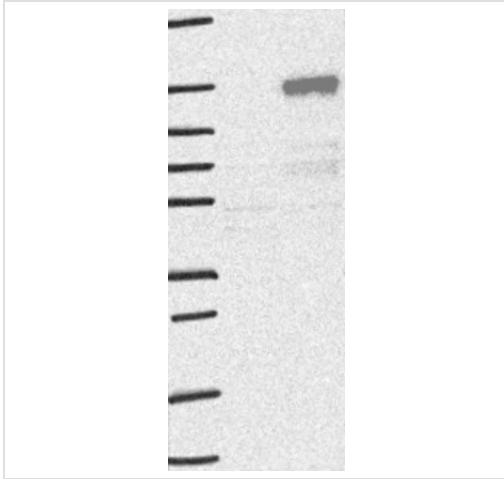
ab122245, at a 1/400 dilution, staining ETAA1 in paraffin-embedded Human kidney tissue by Immunohistochemistry.

Immunohistochemistry (Formalin/PFA-fixed paraffin-embedded sections) - Anti-ETAA1 antibody (ab122245)



ab122245, at 4 µg/ml, staining ETAA1 in Human cell line U-2 OS by Immunofluorescence.

Immunocytochemistry/ Immunofluorescence - Anti-ETAA1 antibody (ab122245)



Western blot - Anti-ETAA1 antibody (ab122245)

Lane 1: Marker [kDa] 250; 130; 95; 72; 55; 36; 28; 17; 10

Lane 2: Negative control (vector only transfected HEK293T lysate)

Lane 3: Over-expression Lysate (Co-expressed with a C-terminal myc-DDK tag (~3.1 kDa) in mammalian HEK293T cells.

Lane 1: Marker [kDa] 250; 130; 95; 72; 55; 36; 28; 17; 10

Lane 2: Negative control (vector only transfected HEK293T lysate)

Lane 3: Over-expression Lysate (Co-expressed with a C-terminal myc-DDK tag (~3.1 kDa) in mammalian HEK293T cells.

Please note: All products are "FOR RESEARCH USE ONLY AND ARE NOT INTENDED FOR DIAGNOSTIC OR THERAPEUTIC USE"

Our Abpromise to you: Quality guaranteed and expert technical support

- Replacement or refund for products not performing as stated on the datasheet
- Valid for 12 months from date of delivery
- Response to your inquiry within 24 hours
- We provide support in Chinese, English, French, German, Japanese and Spanish
- Extensive multi-media technical resources to help you
- We investigate all quality concerns to ensure our products perform to the highest standards

If the product does not perform as described on this datasheet, we will offer a refund or replacement. For full details of the Abpromise, please visit <https://www.abcam.com/abpromise> or contact our technical team.

Terms and conditions

- Guarantee only valid for products bought direct from Abcam or one of our authorized distributors