


Product datasheet

Anti-FBXL3 antibody ab53516

1 Image

Overview

Product name	Anti-FBXL3 antibody
Description	Goat polyclonal to FBXL3
Host species	Goat
Tested applications	Suitable for: WB
Species reactivity	Reacts with: Human Predicted to work with: Dog 
Immunogen	Synthetic peptide: C-KRGGRSDRNSSEE , corresponding to N terminal amino acids 2-15 of Human FBXL3 Run BLAST with Run BLAST with
Positive control	Human Adipose lysate.

Properties

Form	Liquid
Storage instructions	Shipped at 4°C. Upon delivery aliquot and store at -20°C or -80°C. Avoid repeated freeze / thaw cycles.
Storage buffer	pH: 7.30 Preservative: 0.02% Sodium azide Constituents: 0.5% BSA, 0.5% Tris buffered saline
Purity	Immunogen affinity purified
Purification notes	Purified from goat serum by ammonium sulphate precipitation followed by antigen affinity chromatography using the immunizing peptide.
Clonality	Polyclonal
Isotype	IgG

Applications

Our [Abpromise guarantee](#) covers the use of **ab53516** in the following tested applications.

The application notes include recommended starting dilutions; optimal dilutions/concentrations should be determined by the end user.

Application	Abreviews	Notes
-------------	-----------	-------

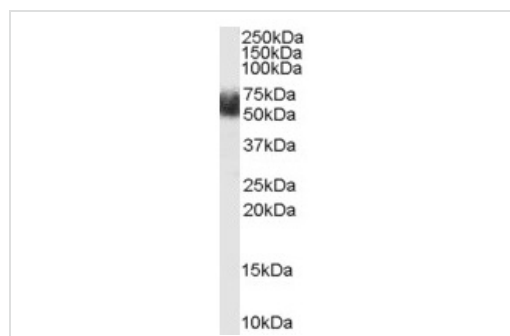
WB

Application notes	<p>Peptide ELISA: antibody detection limit dilution 1:32,000.</p> <p>WB: Use at a concentration of 1 - 3 µg/ml. Detects a band of approximately 53 kDa (predicted molecular weight: 49 kDa).</p> <p>Not yet tested in other applications.</p> <p>Optimal dilutions/concentrations should be determined by the end user.</p>
--------------------------	-----------------------------------------------------------------------------------------------------------------------------------------------------------------------------------------------------------------------------------------------------------------------------------------------------------------------------

Target

Function	Substrate-recognition component of some SCF (SKP1-CUL1-F-box protein)-type E3 ubiquitin ligase complex involved in circadian clock function. The SCF(FBXL3) complex acts by mediating ubiquitination and subsequent degradation of CRY1 and CRY2. Recruiter of target protein that may recognize and bind to some phosphorylated proteins and promotes their ubiquitination and degradation.
Tissue specificity	Widely expressed.
Sequence similarities	<p>Contains 1 F-box domain.</p> <p>Contains 7 LRR (leucine-rich) repeats.</p>
Cellular localization	Nucleus. Cytoplasm. Predominantly nuclear.

Images



Western blot - Anti-FBXL3 antibody (ab53516)

Anti-FBXL3 antibody (ab53516) at 1 µg/ml + Human Adipose lysate (35µg protein in RIPA buffer).

Predicted band size: 49 kDa

Observed band size: 53 kDa

Primary incubation was 1 hour. Detected by chemiluminescence.

Please note: All products are "FOR RESEARCH USE ONLY AND ARE NOT INTENDED FOR DIAGNOSTIC OR THERAPEUTIC USE"

Our Abpromise to you: Quality guaranteed and expert technical support

- Replacement or refund for products not performing as stated on the datasheet
- Valid for 12 months from date of delivery

- Response to your inquiry within 24 hours
- We provide support in Chinese, English, French, German, Japanese and Spanish
- Extensive multi-media technical resources to help you
- We investigate all quality concerns to ensure our products perform to the highest standards

If the product does not perform as described on this datasheet, we will offer a refund or replacement. For full details of the Abpromise, please visit <https://www.abcam.com/abpromise> or contact our technical team.

Terms and conditions

- Guarantee only valid for products bought direct from Abcam or one of our authorized distributors