

Product datasheet

Anti-FBXW12 antibody ab107296

1 Image

Overview

| | |
|----------------------------|--|
| Product name | Anti-FBXW12 antibody |
| Description | Rabbit polyclonal to FBXW12 |
| Host species | Rabbit |
| Tested applications | Suitable for: WB |
| Species reactivity | Reacts with: Human |
| Immunogen | Synthetic peptide conjugated to KLH, corresponding to C terminal amino acids 298-328 of Human FBXW12 (NP_001153399.1, NP_001153401.1, NP_996985.2) |
| Positive control | K562 cell line lysates |

Properties

| | |
|-----------------------------|---|
| Form | Liquid |
| Storage instructions | Shipped at 4°C. Store at 4°C (up to 6 months). Store at -20°C long term. |
| Storage buffer | Preservative: 0.09% Sodium Azide Constituents: PBS |
| Purity | Immunogen affinity purified |
| Purification notes | Purified through a protein A column, followed by peptide affinity purification. |
| Clonality | Polyclonal |
| Isotype | IgG |

Applications

Our [Abpromise guarantee](#) covers the use of **ab107296** in the following tested applications.

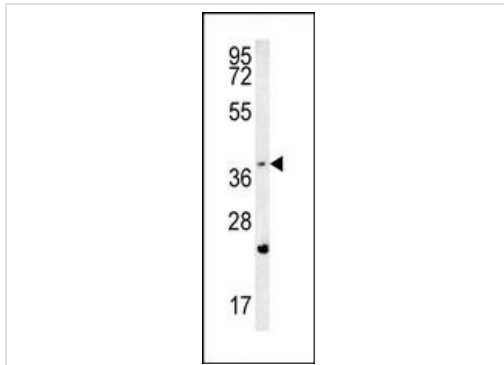
The application notes include recommended starting dilutions; optimal dilutions/concentrations should be determined by the end user.

| Application | Abreviews | Notes |
|-------------|-----------|--|
| WB | | 1/100 - 1/500. Predicted molecular weight: 53 kDa. |

Target

| | |
|------------------------------|--|
| Function | Substrate-recognition component of the SCF (SKP1-CUL1-F-box protein)-type E3 ubiquitin ligase complex. |
| Tissue specificity | Ubiquitously expressed. |
| Sequence similarities | Contains 1 F-box domain. Contains 5 WD repeats. |

Images



Anti-FBXW12 antibody (ab107296) at 1/100 dilution + K562 cell lysate at 35 µg

Predicted band size: 53 kDa

Western blot - Anti-FBXW12 antibody (ab107296)

Please note: All products are "FOR RESEARCH USE ONLY AND ARE NOT INTENDED FOR DIAGNOSTIC OR THERAPEUTIC USE"

Our Abpromise to you: Quality guaranteed and expert technical support

- Replacement or refund for products not performing as stated on the datasheet
- Valid for 12 months from date of delivery
- Response to your inquiry within 24 hours
- We provide support in Chinese, English, French, German, Japanese and Spanish
- Extensive multi-media technical resources to help you
- We investigate all quality concerns to ensure our products perform to the highest standards

If the product does not perform as described on this datasheet, we will offer a refund or replacement. For full details of the Abpromise, please visit <https://www.abcam.com/abpromise> or contact our technical team.

Terms and conditions

- Guarantee only valid for products bought direct from Abcam or one of our authorized distributors