

Product datasheet

Anti-FCHO1 antibody ab84740

[3 References](#) [3 Images](#)

Overview

Product name	Anti-FCHO1 antibody
Description	Rabbit polyclonal to FCHO1
Host species	Rabbit
Tested applications	Suitable for: IHC-P, WB
Species reactivity	Reacts with: Human Predicted to work with: Mouse, Rat, Guinea pig, Cow, Cat, Dog, Zebrafish
Immunogen	Synthetic peptide corresponding to a region within internal sequence amino acids 468-517 (SPENVEDSGL DSPSHAAPGP SPDSWVPRPG TPQSPPSCRA PPPEARGIRA) of Human FCHO1 (NP_055937). Run BLAST with ExPASy Run BLAST with NCBI
Positive control	293T cell lysate.

Properties

Form	Liquid
Storage instructions	Shipped at 4°C. Upon delivery aliquot and store at -20°C. Avoid repeated freeze / thaw cycles.
Storage buffer	Preservative: 0.09% Sodium azide Constituents: 2% Sucrose, PBS
Purity	Immunogen affinity purified
Clonality	Polyclonal
Isotype	IgG

Applications

Our [Abpromise guarantee](#) covers the use of **ab84740** in the following tested applications.

The application notes include recommended starting dilutions; optimal dilutions/concentrations should be determined by the end user.

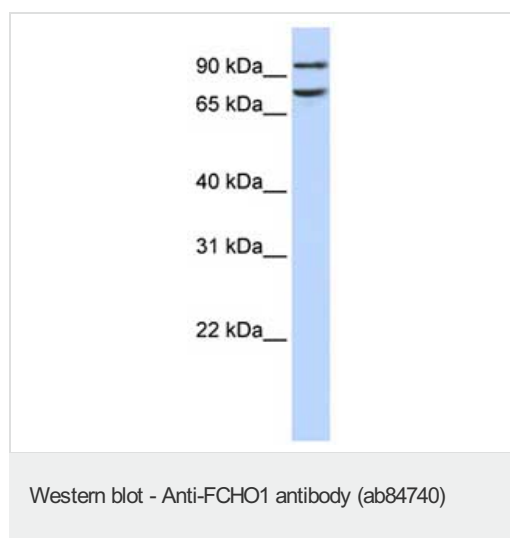
Application	Abreviews	Notes
IHC-P		Use at an assay dependent concentration.

Application	Abreviews	Notes
WB		Use a concentration of 1 µg/ml. Predicted molecular weight: 97 kDa. Good results were obtained when blocked with 5% non-fat dry milk in 0.05% PBS-T.

Target

Relevance FCHO1 is involved in clathrin-coated vesicle formation.

Images



Anti-FCHO1 antibody (ab84740) at 1 µg/ml (in 5% skim milk / PBS buffer) + 293T cell lysate at 10 µg

Secondary

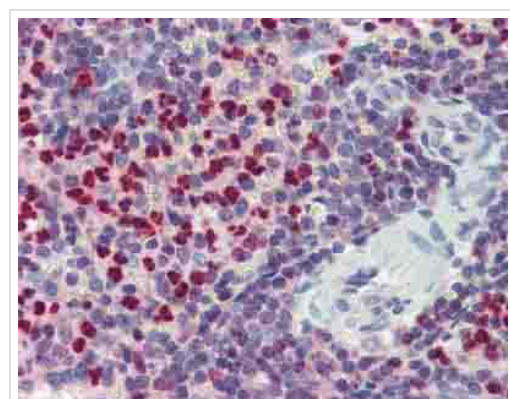
HRP conjugated anti-Rabbit IgG at 1/50000 dilution

Predicted band size: 97 kDa

Observed band size: 97 kDa

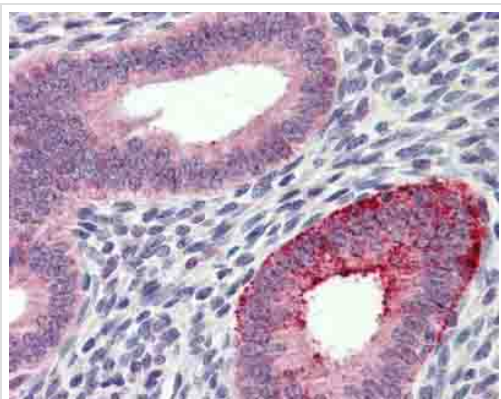
Additional bands at: 80 kDa. We are unsure as to the identity of these extra bands.

Gel concentration: 12%



ab84740 staining FCHO1 in human spleen tissue by Immunohistochemistry (Formalin/PFA-fixed paraffin-embedded sections).

Immunohistochemistry (Formalin/PFA-fixed paraffin-embedded sections) - Anti-FCHO1 antibody (ab84740)



ab84740 staining FCHO1 in human uterus tissue by Immunohistochemistry (Formalin/PFA-fixed paraffin-embedded sections).

Immunohistochemistry (Formalin/PFA-fixed paraffin-embedded sections) - Anti-FCHO1 antibody (ab84740)

Please note: All products are "FOR RESEARCH USE ONLY AND ARE NOT INTENDED FOR DIAGNOSTIC OR THERAPEUTIC USE"

Our Abpromise to you: Quality guaranteed and expert technical support

- Replacement or refund for products not performing as stated on the datasheet
- Valid for 12 months from date of delivery
- Response to your inquiry within 24 hours
- We provide support in Chinese, English, French, German, Japanese and Spanish
- Extensive multi-media technical resources to help you
- We investigate all quality concerns to ensure our products perform to the highest standards

If the product does not perform as described on this datasheet, we will offer a refund or replacement. For full details of the Abpromise, please visit <https://www.abcam.com/abpromise> or contact our technical team.

Terms and conditions

- Guarantee only valid for products bought direct from Abcam or one of our authorized distributors