

Product datasheet

Anti-FCRL4 antibody ab98279

1 Image

Overview

Product name	Anti-FCRL4 antibody
Description	Rabbit polyclonal to FCRL4
Host species	Rabbit
Tested applications	Suitable for: WB
Species reactivity	Reacts with: Human Predicted to work with: Cat, Pig
Immunogen	Synthetic peptide corresponding to a region within N terminal amino acids 35-84 (FKGERVTLTC NGFQFYATEK TTWYHRHYWG EKLTLTPGNT LEVRESGLYR) of Human IRTA1 (NP_112572). Run BLAST with ExPASy Run BLAST with NCBI
Positive control	293T cell lysate

Properties

Form	Liquid
Storage instructions	Shipped at 4°C. Upon delivery aliquot and store at -20°C. Avoid freeze / thaw cycles.
Storage buffer	Preservative: 0.09% Sodium azide Constituents: 2% Sucrose, PBS
Purity	Immunogen affinity purified
Clonality	Polyclonal
Isotype	IgG

Applications

Our [Abpromise guarantee](#) covers the use of **ab98279** in the following tested applications.

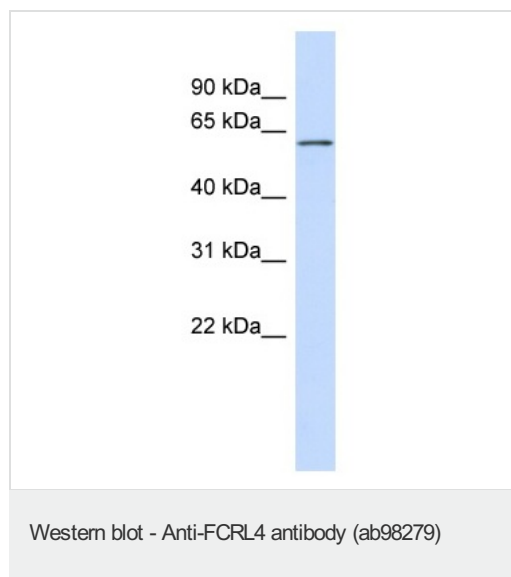
The application notes include recommended starting dilutions; optimal dilutions/concentrations should be determined by the end user.

Application	Abreviews	Notes
WB		Use a concentration of 1 µg/ml. Predicted molecular weight: 57 kDa. Good results were obtained when blocked with 5% non-fat dry milk in 0.05% PBS-T.

Target

Function	May function as an inhibitor of the B-cell receptor signaling. May function in the B-cell-mediated immune response.
Tissue specificity	Specifically expressed by memory and monocytoid B-cells which populate spleen and lymph nodes. Preferentially expressed in memory B-cells associated with mucosal tissue (at protein level).
Involvement in disease	Note=A chromosomal aberration involving FCRL4 is found in non-Hodgkin lymphoma (NHG). Translocation t(1;1)(p36.3; q21.1-2). Note=A chromosomal aberration involving FCRL4 is found in multiple myeloma (MM). Translocation t(1;14)(q21;q32) that forms a FCRL4-IGHA1 fusion protein.
Sequence similarities	Contains 4 Ig-like C2-type (immunoglobulin-like) domains.
Post-translational modifications	Phosphorylated on cytoplasmic tyrosines upon activation.
Cellular localization	Cell membrane.

Images



Anti-FCRL4 antibody (ab98279) at 1 µg/ml +
293T cell lysate at 10 µg

Predicted band size: 57 kDa

Gel concentration: 12%

Please note: All products are "FOR RESEARCH USE ONLY AND ARE NOT INTENDED FOR DIAGNOSTIC OR THERAPEUTIC USE"

Our Abpromise to you: Quality guaranteed and expert technical support

- Replacement or refund for products not performing as stated on the datasheet
- Valid for 12 months from date of delivery
- Response to your inquiry within 24 hours
- We provide support in Chinese, English, French, German, Japanese and Spanish
- Extensive multi-media technical resources to help you
- We investigate all quality concerns to ensure our products perform to the highest standards

If the product does not perform as described on this datasheet, we will offer a refund or replacement. For full details of the Abpromise, please visit <https://www.abcam.com/abpromise> or contact our technical team.

Terms and conditions

- Guarantee only valid for products bought direct from Abcam or one of our authorized distributors