

Product datasheet

Anti-FIBIN antibody ab122621

[3 Images](#)

Overview

Product name	Anti-FIBIN antibody
Description	Rabbit polyclonal to FIBIN
Host species	Rabbit
Tested applications	Suitable for: IHC-P, WB, ICC/IF
Species reactivity	Reacts with: Human
Immunogen	antigen sequence: TLHHYFVPDG DYEENDDPEK CQLLFRVSDH RRCSQGEGSQ VGSLLSLTLR EEFTVLGRQV EDAGRVLEGI SKSISYD, corresponding to amino acids 32-108 of Human FIBIN. Run BLAST with ExPASy Run BLAST with NCBI
Positive control	FIBIN over-expression HEK293T Lysate; Human placenta tissue.

Properties

Form	Liquid
Storage instructions	Shipped at 4°C. Upon delivery aliquot and store at -20°C. Avoid repeated freeze / thaw cycles.
Storage buffer	pH: 7.20 Preservative: 0.02% Sodium azide Constituents: 59% PBS, 40% Glycerol
Purity	Immunogen affinity purified
Clonality	Polyclonal
Isotype	IgG

Applications

Our [Abpromise guarantee](#) covers the use of **ab122621** in the following tested applications.

The application notes include recommended starting dilutions; optimal dilutions/concentrations should be determined by the end user.

Application	Abreviews	Notes
IHC-P		1/50 - 1/200. Perform heat mediated antigen retrieval with citrate buffer pH 6 before commencing with IHC staining protocol.

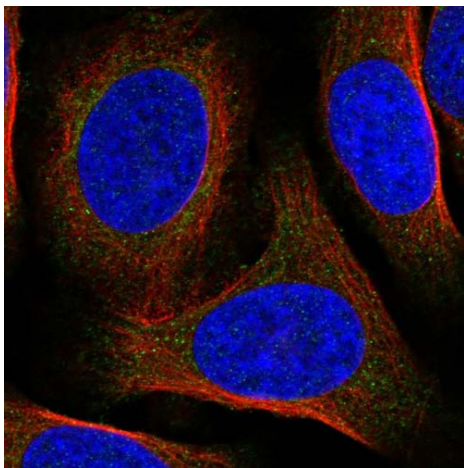
Application	Abreviews	Notes
WB		1/250 - 1/500.
ICC/IF		Use a concentration of 1 - 4 µg/ml. Recommend PFA Fixation and Triton X-100 treatment

Target

Sequence similarities Belongs to the FIBIN family.

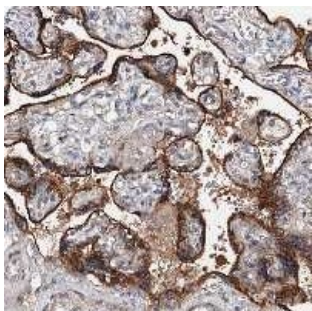
Cellular localization Secreted. Golgi apparatus.

Images



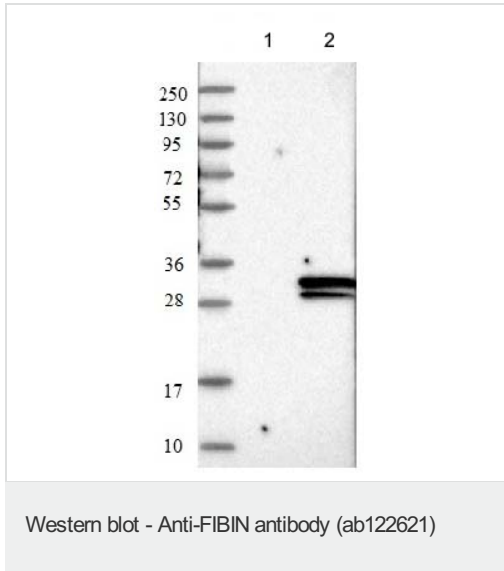
Immunofluorescent staining of Human cell line U-2 OS shows positivity in cytoplasm. Recommended concentration of ab122621 1-4 µg/ml. Cells treated with PFA/Triton X-100.

Immunocytochemistry/ Immunofluorescence - Anti-FIBIN antibody (ab122621)



ab122621 at 1/50 dilution staining FIBIN in paraffin-embedded Human placenta tissue by Immunohistochemistry.

Immunohistochemistry (Formalin/PFA-fixed paraffin-embedded sections) - Anti-FIBIN antibody (ab122621)



All lanes : Anti-FIBIN antibody (ab122621) at 1/250 dilution

Lane 1 : Negative control (vector only transfected HEK293T lysate)

Lane 2 : FIBIN Over-expression HEK293T Lysate (Co-expressed with a C-terminal myc-DDK tag (~3.1 kDa))

Developed using the ECL technique.

Please note: All products are "FOR RESEARCH USE ONLY AND ARE NOT INTENDED FOR DIAGNOSTIC OR THERAPEUTIC USE"

Our Abpromise to you: Quality guaranteed and expert technical support

- Replacement or refund for products not performing as stated on the datasheet
- Valid for 12 months from date of delivery
- Response to your inquiry within 24 hours
- We provide support in Chinese, English, French, German, Japanese and Spanish
- Extensive multi-media technical resources to help you
- We investigate all quality concerns to ensure our products perform to the highest standards

If the product does not perform as described on this datasheet, we will offer a refund or replacement. For full details of the Abpromise, please visit <https://www.abcam.com/abpromise> or contact our technical team.

Terms and conditions

- Guarantee only valid for products bought direct from Abcam or one of our authorized distributors