

Product datasheet

Anti-FKBP10 antibody ab86580

1 Image

Overview

Product name	Anti-FKBP10 antibody
Description	Rabbit polyclonal to FKBP10
Host species	Rabbit
Tested applications	Suitable for: WB, ELISA
Species reactivity	Reacts with: Human
Immunogen	Synthetic peptide from the C terminus of human FKBP10 conjugated to KLH.
Positive control	A2058 cell line lysate

Properties

Form	Liquid
Storage instructions	Shipped at 4°C. Upon delivery aliquot and store at -20°C. Avoid freeze / thaw cycles.
Storage buffer	Preservative: 0.09% Sodium Azide Constituents: PBS
Purity	Ammonium Sulphate Precipitation
Purification notes	This antibody is prepared by Saturated Ammonium Sulfate precipitation followed by dialysis against PBS.
Clonality	Polyclonal
Isotype	IgG

Applications

Our [Abpromise guarantee](#) covers the use of **ab86580** in the following tested applications.

The application notes include recommended starting dilutions; optimal dilutions/concentrations should be determined by the end user.

Application	Abreviews	Notes
WB		1/50 - 1/100. Predicted molecular weight: 64 kDa.
ELISA		1/1000.

Target

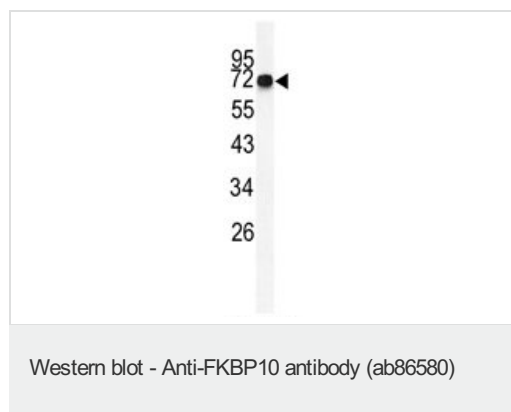
Relevance

FKBP10 (FK506 binding protein 10) belongs to the FKBP type peptidyl-prolyl cis/trans isomerase (PPIase) family. PPIases accelerate the folding of proteins during protein synthesis, acting as molecular chaperones. FKBP10 is located in the endoplasmic reticulum (ER) and is thought to play a role in the folding and trafficking of secretory proteins.

Cellular localization

Endoplasmic reticulum

Images



Anti-FKBP10 antibody (ab86580) at 1/50 dilution + A2058 cell line lysate at 35 µg

Predicted band size: 64 kDa

Observed band size: 64 kDa

Please note: All products are "FOR RESEARCH USE ONLY AND ARE NOT INTENDED FOR DIAGNOSTIC OR THERAPEUTIC USE"

Our Abpromise to you: Quality guaranteed and expert technical support

- Replacement or refund for products not performing as stated on the datasheet
- Valid for 12 months from date of delivery
- Response to your inquiry within 24 hours
- We provide support in Chinese, English, French, German, Japanese and Spanish
- Extensive multi-media technical resources to help you
- We investigate all quality concerns to ensure our products perform to the highest standards

If the product does not perform as described on this datasheet, we will offer a refund or replacement. For full details of the Abpromise, please visit <https://www.abcam.com/abpromise> or contact our technical team.

Terms and conditions

- Guarantee only valid for products bought direct from Abcam or one of our authorized distributors