

## Product datasheet

# Anti-FKBP51 antibody ab2901

★★★★★ 2 Abreviews 10 References 2 Images

### Overview

---

<b>Product name</b>	Anti-FKBP51 antibody
<b>Description</b>	Rabbit polyclonal to FKBP51
<b>Host species</b>	Rabbit
<b>Tested applications</b>	<b>Suitable for:</b> WB, IP, IHC-P
<b>Species reactivity</b>	<b>Reacts with:</b> Mouse, Rat, Hamster, Dog, Human, Xenopus laevis, Non human primates
<b>Immunogen</b>	Synthetic peptide corresponding to Human FKBP51 aa 394-407. Sequence: CQKKAKEHNERDRR  Database link: <a href="#">Q13451</a> (Peptide available as <a href="#">ab4924</a> )  <a href="#">Run BLAST with</a> <a href="#">Run BLAST with</a>
<b>Positive control</b>	WB: HeLa cell lysate. K562, HepG2, PC-3 and MCF7 nuclear enriched extracts.

### Properties

---

<b>Form</b>	Liquid
<b>Storage instructions</b>	Shipped at 4°C. Store at +4°C short term (1-2 weeks). Upon delivery aliquot. Store at -20°C or -80°C. Avoid freeze / thaw cycle.
<b>Storage buffer</b>	Preservative: 0.05% Sodium azide Constituents: 0.1% BSA, PBS
<b>Purity</b>	Immunogen affinity purified
<b>Clonality</b>	Polyclonal
<b>Isotype</b>	IgG

### Applications

---

Our [Abpromise guarantee](#) covers the use of **ab2901** in the following tested applications.

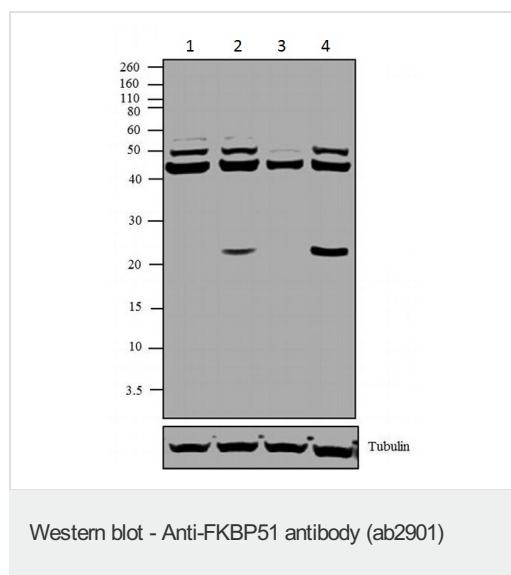
The application notes include recommended starting dilutions; optimal dilutions/concentrations should be determined by the end user.

Application	Abreviews	Notes
WB	★★★★★	Use a concentration of 1 µg/ml. Detects a band of approximately 51 kDa. Can be blocked with <a href="#">FKBP51 peptide (ab4924)</a> . By Western blot, this antibody detects an ~51 kDa protein representing FKBP 51 in HeLa cell lysate. By Western blot this antibody also detects FKBP 51 in whole tissue extracts from rat kidney and rat and mouse testes.
IP		Use at an assay dependent concentration.
IHC-P		Use at an assay dependent concentration. PubMed: 20422297

## Target

<b>Function</b>	Interacts with functionally mature heterooligomeric progesterone receptor complexes along with HSP90 and TEBP.
<b>Tissue specificity</b>	Widely expressed, enriched in testis compared to other tissues.
<b>Sequence similarities</b>	Contains 2 PPlase FKBP-type domains. Contains 3 TPR repeats.
<b>Post-translational modifications</b>	Phosphorylated upon DNA damage, probably by ATM or ATR.
<b>Cellular localization</b>	Cytoplasm. Nucleus.

## Images



**All lanes :** Anti-FKBP51 antibody (ab2901) at 2 µg/ml

**Lane 1 :** K562 (human chronic myelogenous leukemia cell line from bone marrow) nuclear enriched extract

**Lane 2 :** HepG2 (human liver hepatocellular carcinoma cell line) nuclear enriched extract

**Lane 3 :** PC-3 (human prostate adenocarcinoma cell line) nuclear enriched extract

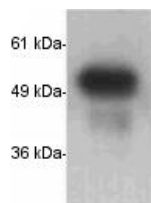
**Lane 4 :** MCF7 (human breast adenocarcinoma cell line) nuclear enriched extract

Lysates/proteins at 30 µg per lane.

### Secondary

**All lanes :** Goat anti-Rabbit IgG (H+L) at 1/2500 dilution

Approximately 51 and 45 kDa bands corresponding to FKBP51 were observed across cell lines tested



Anti-FKBP51 antibody (ab2901) at 2 µg/ml + HeLa (human epithelial cell line from cervix adenocarcinoma) cell lysate

Western blot - Anti-FKBP51 antibody (ab2901)

**Please note:** All products are "FOR RESEARCH USE ONLY AND ARE NOT INTENDED FOR DIAGNOSTIC OR THERAPEUTIC USE"

### Our Abpromise to you: Quality guaranteed and expert technical support

---

- Replacement or refund for products not performing as stated on the datasheet
- Valid for 12 months from date of delivery
- Response to your inquiry within 24 hours
- We provide support in Chinese, English, French, German, Japanese and Spanish
- Extensive multi-media technical resources to help you
- We investigate all quality concerns to ensure our products perform to the highest standards

If the product does not perform as described on this datasheet, we will offer a refund or replacement. For full details of the Abpromise, please visit <https://www.abcam.com/abpromise> or contact our technical team.

### Terms and conditions

---

- Guarantee only valid for products bought direct from Abcam or one of our authorized distributors