


Product datasheet

Anti-FOXE1 antibody ab70607

1 Image

Overview

Product name	Anti-FOXE1 antibody
Description	Rabbit polyclonal to FOXE1
Host species	Rabbit
Tested applications	Suitable for: WB
Species reactivity	Reacts with: Human Predicted to work with: Mouse 
Immunogen	Synthetic peptide conjugated to KLH derived from within residues 350 to the C-terminus of Human FOXE1. Read Abcam's proprietary immunogen policy (Peptide available as ab94826 .)
Positive control	This antibody gave a positive signal in HeLa whole cell lysate.

Properties

Form	Liquid
Storage instructions	Shipped at 4°C. Store at +4°C short term (1-2 weeks). Upon delivery aliquot. Store at -20°C or -80°C. Avoid freeze / thaw cycle.
Storage buffer	Preservative: 0.02% Sodium Azide Constituents: 1% BSA, PBS, pH 7.4
Purity	Immunogen affinity purified
Clonality	Polyclonal
Isotype	IgG

Applications

Our [Abpromise guarantee](#) covers the use of **ab70607** in the following tested applications.

The application notes include recommended starting dilutions; optimal dilutions/concentrations should be determined by the end user.

Application	Abreviews	Notes
-------------	-----------	-------

WB

Application notes	WB: Use at a concentration of 1 µg/ml. Detects a band of approximately 42 kDa (predicted molecular weight: 38 kDa).
--------------------------	---

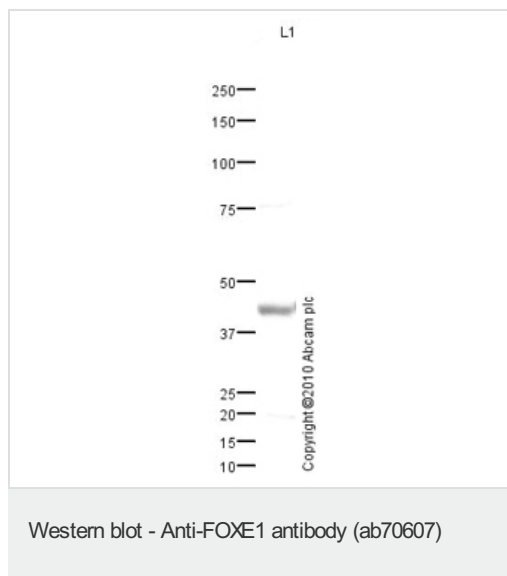
Not yet tested in other applications.

Optimal dilutions/concentrations should be determined by the end user.

Target

Function	Probable transcription factor. Could be involved in thyroid gland organogenesis.
Tissue specificity	Detected in adult brain, placenta, lung, liver, skeletal muscle, kidney, pancreas, heart, colon, small intestine testis and thymus. Expression was strongest in heart and pancreas.
Involvement in disease	Defects in FOXE1 are the cause of Bamforth-Lazarus syndrome (BLS) [MIM:241850]. BLS is associated with thyroid agenesis, cleft palate and choanal atresia.
Sequence similarities	Contains 1 fork-head DNA-binding domain.
Post-translational modifications	Phosphorylated.
Cellular localization	Nucleus.

Images



Anti-FOXE1 antibody (ab70607) at 1 µg/ml + HeLa (Human epithelial carcinoma cell line) Whole Cell Lysate at 10 µg

Secondary

Goat polyclonal to Rabbit IgG - H&L - Pre-Adsorbed (HRP) at 1/3000 dilution

Developed using the ECL technique.

Performed under reducing conditions.

Predicted band size: 38 kDa

Observed band size: 42 kDa

[why is the actual band size different from the predicted?](#)

Exposure time: 15 minutes

Please note: All products are "FOR RESEARCH USE ONLY AND ARE NOT INTENDED FOR DIAGNOSTIC OR THERAPEUTIC USE"

Our Abpromise to you: Quality guaranteed and expert technical support

- Replacement or refund for products not performing as stated on the datasheet
- Valid for 12 months from date of delivery
- Response to your inquiry within 24 hours
- We provide support in Chinese, English, French, German, Japanese and Spanish

- Extensive multi-media technical resources to help you
- We investigate all quality concerns to ensure our products perform to the highest standards

If the product does not perform as described on this datasheet, we will offer a refund or replacement. For full details of the Abpromise, please visit <https://www.abcam.com/abpromise> or contact our technical team.

Terms and conditions

- Guarantee only valid for products bought direct from Abcam or one of our authorized distributors