


Product datasheet

Anti-FSTL1 antibody ab111969

1 Image

Overview

---

<b>Product name</b>	Anti-FSTL1 antibody
<b>Description</b>	Rabbit polyclonal to FSTL1
<b>Host species</b>	Rabbit
<b>Tested applications</b>	<b>Suitable for:</b> WB
<b>Species reactivity</b>	<b>Reacts with:</b> Mouse, Human <b>Predicted to work with:</b> Rat, Rabbit, Horse, Chicken, Cow, Dog, Chimpanzee, Gorilla, Chinese hamster, Orangutan 
<b>Immunogen</b>	Synthetic peptide corresponding to Human FSTL1 aa 100-200 conjugated to Keyhole Limpet Haemocyanin (KLH). Database link: <a href="#">Q12841</a>
<b>Positive control</b>	This antibody gave a positive signal in Human Plasma Total Protein lysate as well as the following whole cell lysates: A431; MD MBA 231; HeLa; NIH3T3.

Properties

---

<b>Form</b>	Liquid
<b>Storage instructions</b>	Shipped at 4°C. Store at +4°C short term (1-2 weeks). Upon delivery aliquot. Store at -20°C or -80°C. Avoid freeze / thaw cycle.
<b>Storage buffer</b>	pH: 7.40 Preservative: 0.02% Sodium azide Constituent: PBS  Batches of this product that have a concentration < 1mg/ml may have BSA added as a stabilising agent. If you would like information about the formulation of a specific lot, please contact our scientific support team who will be happy to help.
<b>Purity</b>	Immunogen affinity purified
<b>Clonality</b>	Polyclonal
<b>Isotype</b>	IgG

Applications

---

Our [Abpromise guarantee](#) covers the use of **ab111969** in the following tested applications.

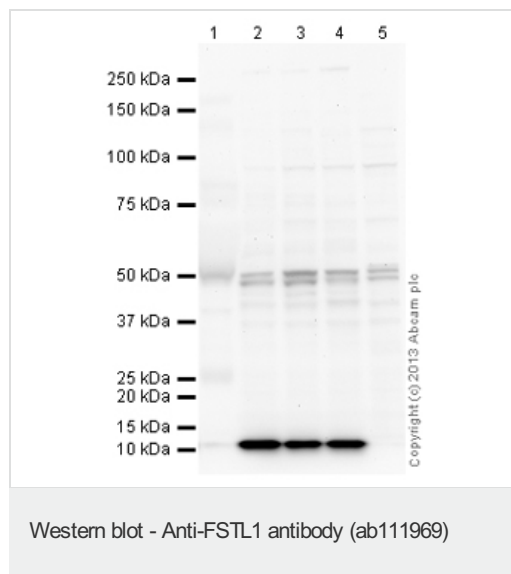
The application notes include recommended starting dilutions; optimal dilutions/concentrations should be determined by the end user.

Application	Abreviews	Notes
WB		Use a concentration of 1 µg/ml. Detects a band of approximately 48, 50 kDa (predicted molecular weight: 35 kDa).

## Target

<b>Function</b>	May modulate the action of some growth factors on cell proliferation and differentiation. Binds heparin.
<b>Tissue specificity</b>	Overexpressed in synovial tissues from rheumatoid arthritis.
<b>Sequence similarities</b>	Contains 2 EF-hand domains. Contains 1 follistatin-like domain. Contains 1 Kazal-like domain. Contains 1 VWFC domain.
<b>Cellular localization</b>	Secreted.

## Images



**All lanes** : Anti-FSTL1 antibody (ab111969)  
at 1 µg/ml

**Lane 1** : Human Plasma Total Protein Lysate

**Lane 2** : A431 (Human epithelial carcinoma cell line) Whole Cell Lysate

**Lane 3** : MDA-MB-231 (Human breast adenocarcinoma cell line) Whole Cell Lysate

**Lane 4** : HeLa (Human epithelial carcinoma cell line) Whole Cell Lysate

**Lane 5** : NIH 3T3 (Mouse embryonic fibroblast cell line) Whole Cell Lysate

Lysates/proteins at 25 µg per lane.

### Secondary

**All lanes** : Goat Anti-Rabbit IgG H&L (HRP) ([ab97051](#)) at 1/10000 dilution

Developed using the ECL technique.

Performed under reducing conditions.

**Predicted band size:** 35 kDa

**Observed band size:** 50 kDa

**Additional bands at:** 11 kDa (possible non-specific binding), 48 kDa (possible cleavage fragment), 95 kDa (possible non-specific binding)

**Exposure time:** 2 minutes

FSTL1 contains a number of potential glycosylation sites (SwissProt) which may explain its migration at a higher molecular weight than predicted.

The band observed at 48 kDa could potentially be a cleaved form of FSTL1 due to the presence of a 20 amino acid signal peptide.

This blot was produced using a 10% Bis-tris gel under the MOPS buffer system. The gel was run at 200V for 50 minutes before being transferred onto a Nitrocellulose membrane at 30V for 70 minutes. The membrane was then blocked for an hour using 5% Bovine Serum Albumin before being incubated with ab111969 overnight at 4°C. Antibody binding was detected using an anti-rabbit antibody conjugated to HRP, and visualised using ECL development solution.

---

**Please note:** All products are "FOR RESEARCH USE ONLY AND ARE NOT INTENDED FOR DIAGNOSTIC OR THERAPEUTIC USE"

---

### **Our Abpromise to you: Quality guaranteed and expert technical support**

- Replacement or refund for products not performing as stated on the datasheet
- Valid for 12 months from date of delivery
- Response to your inquiry within 24 hours
  
- We provide support in Chinese, English, French, German, Japanese and Spanish
- Extensive multi-media technical resources to help you
- We investigate all quality concerns to ensure our products perform to the highest standards

If the product does not perform as described on this datasheet, we will offer a refund or replacement. For full details of the Abpromise,

please visit <https://www.abcam.com/abpromise> or contact our technical team.

## Terms and conditions

---

- Guarantee only valid for products bought direct from Abcam or one of our authorized distributors